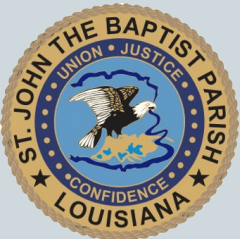


2021 Hazard Mitigation Plan Update

Committee Meeting 1: Assess the Hazard



St. John
The Baptist Parish
Coastal & Water
Management

What is a hazard mitigation plan?



ST. JOHN THE BAPTIST PARISH HAZARD MITIGATION UPDATE - 2015



Points for the Community Rating System

Credit Points	Class	Premium Reduction	Premium Reduction
		SFHA*	Non-SFHA**
4,500+	1	45%	10%
4,000 – 4,499	2	40%	10%
3,500 – 3,999	3	35%	10%
3,000 – 3,499	4	30%	10%
2,500 – 2,999	5	25%	10%
2,000 – 2,499	6	20%	10%
1,500 – 1,999	7	15%	5%
1,000 – 1,499	8	10%	5%
500 – 999	9	5%	5%
0 – 499	10	0	0

Hazard Mitigation Plan Update Committee Steps

- Assess the hazard
- Assess the problem
- Set goals
- Review activities
- Review the plan



Hazard Profile Summary

Hazard	Profiled in Last Plan	Considered Medium or High Risk in the State's HM Plan	Profiled in the 2021 Update
Drought	X		X
Expansive Soils	X		X
Extreme Heat	*		
Flooding	X	X	X
Thunderstorms	X	X	X
Tornadoes	X	X	X
Tropical Cyclones	X	X	X
Winter Storms	X		X

*Discounted in last HMP Update.

The following hazards have been selected to be included in this risk assessment:

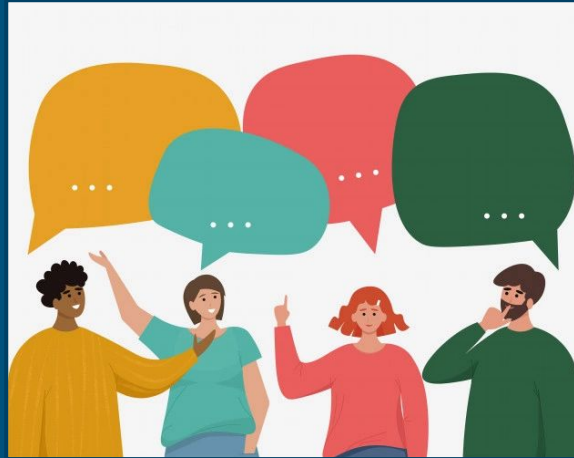
- Drought
- Expansive Soils
- Flooding
- Thunderstorms
- Tornadoes
- Tropical Cyclones
- Winter Storms



Impact of the hazards:

- Flooding from rivers and waterways, rainstorms, tropical cyclones, and hurricanes in the following forms:
 - Riverine
 - Stormwater
 - Surge
 - Backwater flooding (as the result of river flooding and surge)
 - Coastal
- High wind damage most commonly resulting from hurricanes, thunderstorms, and tornadoes
- Property damage resulting from all profiled natural hazards

Discussion: What's missing?



Hazard Probabilities

Hazard	Probability
Expansive Soils	100%
Tropical Cyclones	100%
Flooding	37%
Tornadoes	30%
Thunderstorms - Hail	17%
Winter Storms	13%
Drought	7%
Thunderstorms - Lightning	3%
Thunderstorms - Wind	3%

Discussion: How would you rank these hazards?



Survey

Rank the hazards

- Impact on you
- Impact on the parish
- Mitigation priority



Comments?



Thank you for your participation!

Tara Lambeth, PhD, AICP, CFM

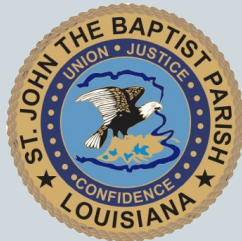
Coastal and Water Management Division Lead

Saint John the Baptist Parish

Office: 985.651.5565

Email: t.lambeth@stjohn-la.gov

Website: www.sjbparish.com



St. John
The Baptist Parish
Coastal & Water
Management