

EMERGENCY NUMBERS

Emergency Preparedness – 985-652-2222

Power Outage – 1-800-9OUTAGE

Atmos Energy – 1-888-286-6700

St. John Sheriff's Office – 985-652-9513

LA Info & Referral Service – 211

To report flooding or water/sewerage emergencies – 911

STAY CONNECTED

Sign up for Emergency alerts via phone, text or email.

www.sjbparish.gov

Additional Resources:

www.sjbparish.gov

 facebook.com/sjbparish

 twitter.com/sjbpgov

 instagram.com/stjohnthebaptistparish

 SJTV channel (Channel 15 - RTC, Channel 99 - UVerse-
Channel 191 or 1098 - Comcast)

WWL Radio 870 AM and 105.3 FM

Communications@stjohn-la.gov

NOW IS THE TIME TO BUY FLOOD INSURANCE!

- Flooding can be a major concern. Sources of flooding include flash flooding following a heavy rain, ponding related to drainage issues, backwater flooding and coastal flooding.
- Every resident and business owner in St. John the Baptist Parish is at some level of flood risk; and flood insurance is available to help reduce the financial impact of a flood whether your building is in a high flood risk area (or the Special Flood Hazard Area) or not.
- While most disasters are covered under a standard homeowner's policy, flooding is not, and remember, there's a 30 day waiting period from the date of purchase before your policy goes into effect. Therefore, now is the best time to buy flood insurance.
- Flood insurance claims are paid even when federal disaster assistance is not available. You can speak to a licensed insurance agent to get more information!



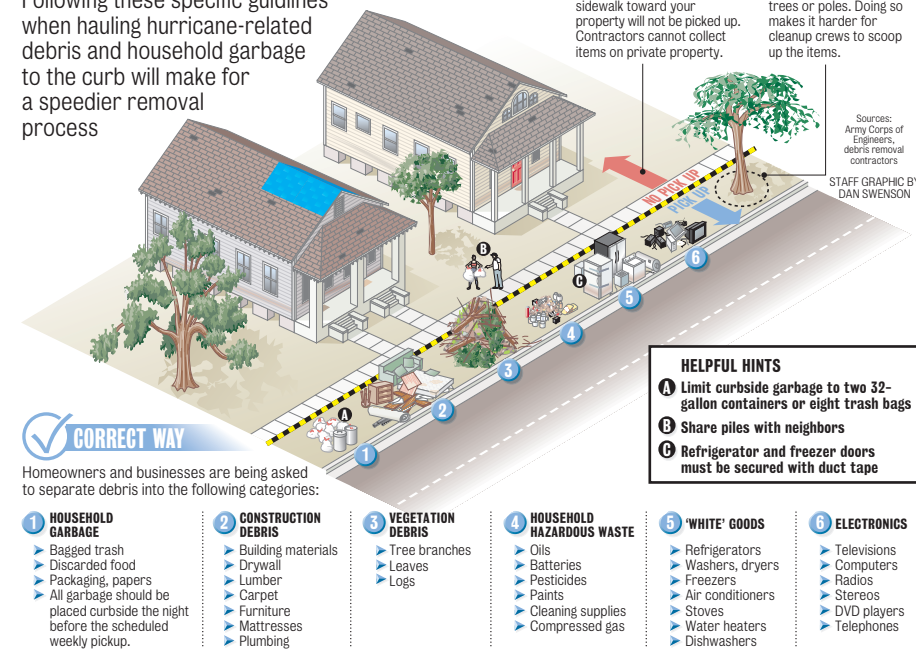
RETURNING HOME

- Do not return home until Parish is declared safe
- Do not walk or drive in flooded areas
- Do not interfere with rescue and recovery workers
- Stay off of the roads
- Use telephone for emergencies only
- Stay away from loose dangling power lines
- Conserve water
- Open windows and doors to ventilate homes

Report downed power lines immediately to Entergy at
1-800-9OUTAGE

PICKING UP THE PIECES

Following these specific guidelines when hauling hurricane-related debris and household garbage to the curb will make for a speedier removal process



POST-DISASTER BUSINESS RESOURCES

LOUISIANA SMALL BUSINESS DEVELOPMENT CENTER

www.louisianasbdc.org · 1-866-782-4159 (Business assistance)

U.S. SMALL BUSINESS ADMINISTRATION

www.sba.gov · 1-800-827-5722 · 1-800-659-2955 (Loans & grants)

LOUISIANA BUSINESS EMERGENCY OPERATIONS CENTER

www.labeoc.org (Activates during disaster, pre-register business now)

PRESORTED
STANDARD
U.S. POSTAGE PAID
NEW ORLEANS, LA
PERMIT NO. 665

St. JOHN
THE BAPTIST PARISH



1811 W. Airline Hwy.
LaPlace, Louisiana 70068

RECOVERY

DISASTER FOOD STAMPS (DSNAP)

www.dcfsls.la.gov/preapply

FEMA

www.fema.gov

1-800-621-3362

DISASTER ASSISTANCE

<http://www.disasterassistance.gov/>

BUILDING PERMITS

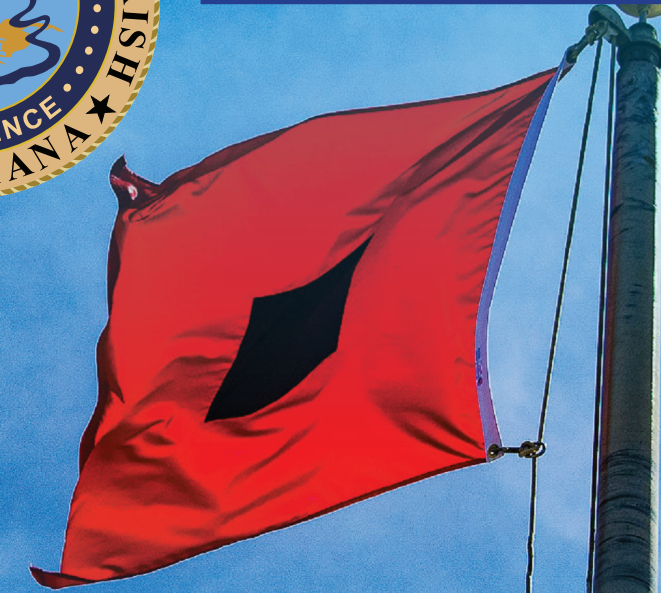
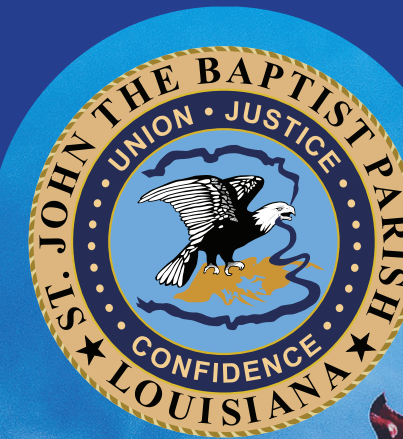
St. John Parish Planning &
Zoning

1811 W. Airline Hwy.

LaPlace LA 70068

(985) 651-5565

**** If a disaster recovery center is opened in St. John Parish, information will be available on the Parish website at www.sjbparish.gov and the government access channel (15/99). Additional recovery information will be posted as it becomes available.**



St. JOHN
THE BAPTIST PARISH

Stay Connected this
**HURRICANE
SEASON**

Jaclyn Hotard, Parish President
1811 West Airline Hwy.
LaPlace, LA 70068
(985) 652-9569
www.sjbparish.gov





HURRICANES

Hurricanes cause damage through: high winds, heavy rain, storm surge, and flooding.

Hurricane conditions including heavy rain, tidal flooding, and winds above 75 mph are possible within 36 hours.

Hurricane conditions are expected within 48 hours. Often, a flood hazard is "imminent" or already occurring. A warning is used for conditions posing a threat to life or property.

Storm surge is a dome of water pushed onshore by hurricane and tropical storm force winds. It is the abnormal rise in sea level accompanying a hurricane or other intense storm.



Get a game plan now! www.getagameplan.org

- Essential Supplies
- Important Documents
- Prescriptions/Medications

- Personal Evacuation Plan
- Protect Your Home
- Protect Your Valuables

Individuals with special needs should call the **Department of Community Services** Office at **985-536-4955** to register for assistance during an evacuation.

St. John Parish Animal Shelter 985-651-7387

Plan to bring food and water, a manual can opener, leashes, pet carriers, newspaper, veterinary records, including shot records and current identification when evacuating.

If a mandatory evacuation is called, please bring pets to a St. John Parish pick up point to be transported to the proper shelter.



THE REALLY BIG PICTURE - Building a continuity plan can prevent costly business interruptions, allowing your company to respond and recover after a disaster.

PUBLIC-PRIVATE COLLABORATION - Check with local emergency officials to determine what your community has planned in case of an emergency. Visit [fema.gov](https://www.fema.gov) for useful resources and tools in preparing your business for a disaster.

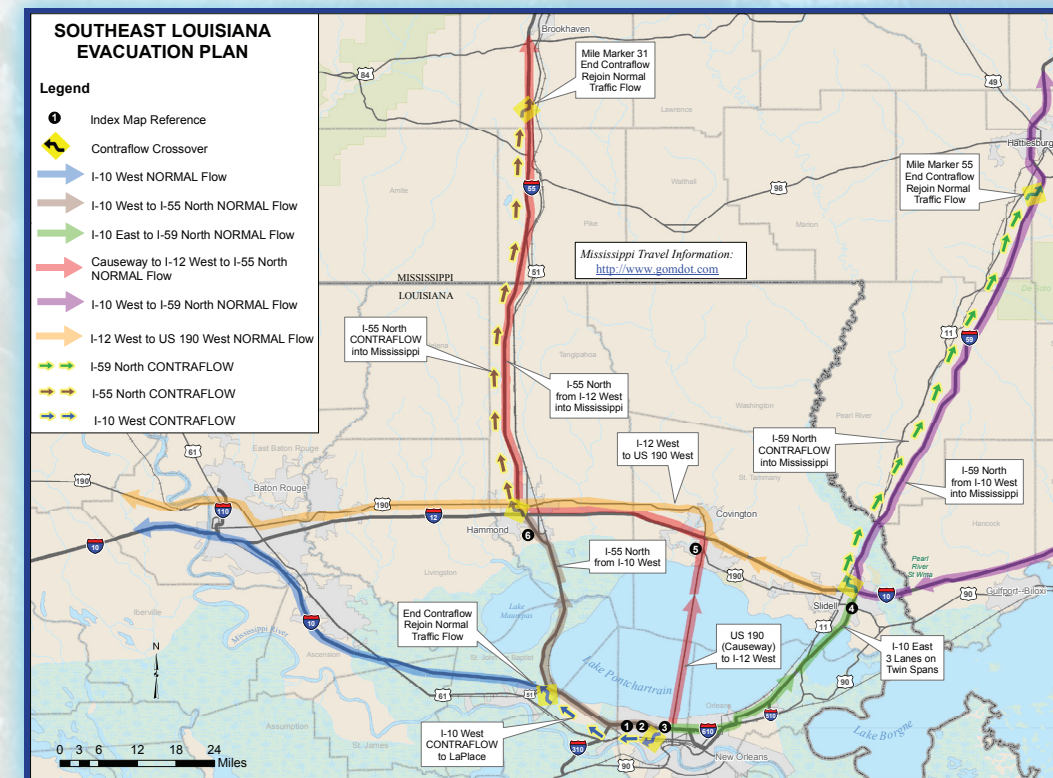
SHORING UP SUPPLY CHAINS - Build a list of critical inventory and contact information by using the Institute for Business & Home Safety toolkit. Shoring up supply chains not only means raw materials, it also includes managed data centers or technology providers.

VIRTUALLY BULLETPROOF - Ensure your vital records, computer equipment and software are safe by having a back-up system in place. Consider going virtual.

EMPLOYEE INFORMATION - Build a list of employee contacts to keep track of employees and provide timely information during an emergency.

Evacuation Routes

A look at the six official evacuation routes and three contraflow points:



MANDATORY EVACUATION ONLY

St. John Parish will transport residents via school bus to public shelters in North Louisiana. Residents will be registered and tracked. Each person will be allowed one suitcase.

PICKUP POINTS:

**East St. John Preparatory
Academy**
(Registration & Pickup)
400 Ory Drive, LaPlace, LA 70068

Edgard Courthouse
(Pickup ONLY)
2393 LA-18, Edgard, LA 70049

- Have a family survival kit and extra batteries ready
- Stay tuned to radio and television news broadcasts – listen for instructions from local officials
- Limit phone use to important calls and emergencies
- Prepare for extended loss of power and have food & water for at least one week
- Ensure blankets and medical supplies are on hand
- Stay in high places in case of flooding
- Emergency services may be limited based on weather

- STEP 1:** Decide where you will go
- STEP 2:** Learn the Evacuation Routes & Procedures
- STEP 3:** Prepare your Survival Kit
- STEP 4:** Prepare for those with special needs (infants/children, elderly, disabled)
- STEP 5:** Make provisions for animals
- STEP 6:** Prepare important documents & memorabilia
- STEP 7:** Create an inventory of insurance & property
- STEP 8:** Protect & safeguard your home and property
- STEP 9:** Plan for family notification & communication
- STEP 10:** Plan finances

- Food (3-day supply)
- Baby Supplies
- Personal Items
- Children's Supplies
- Sanitary Items
- Clothing + Bedding
- Battery-operated Radio
- Extra Batteries
- NOAA Weather Radio
- Waterproof Flashlights
- Cleanup Supplies
- Important Documents
- Driver's License or Some Form of identification
- Social Security Cards
- Birth Certificates
- Proof of Residence (deed or lease)
- Extra Cash
- Household Inventory (photo or video)
- Pet Veterinary Records
- Safety Supplies
- Prescriptions
- Medications (7-day supply)
- List of Each Family Member's Prescriptions, Medications, Dosage and Schedule
- First Aid Supplies

Emergency Info: 2-1-1

Weather: Weather.gov

Road Info: 511LA.ORG OR DIAL 5-1-1

State Police: LSP.ORG or 800-469-4828

RADIO: 870 AM, 105.3 FM, 101.9 FM

Parish Website: www.sjbparish.gov