

# WEST SHORE LAKE PONTCHARTRAIN STAKEHOLDER UPDATE

February 2025

L. Jeff Williams  
Senior Project Manager, WSLP  
New Orleans District  
U.S. Army Corps of Engineers



US Army Corps  
of Engineers®



# AGENDA

- Resiliency Study Schedule
- Construction Status
- Construction Photos
- Pre-Construction Status
- Maps

<https://www.mvn.usace.army.mil/About/Projects/West-Shore-Lake-Pontchartrain/>



# RESILIENCY STUDY SCHEDULE

- The Senior Leader Panel to review the VTAM schedule was 22 October

Milestone	3x3 Study Schedule	Standard Duration	Additional Time Requested	VTAM Schedule
Feasibility Cost Sharing Agreement (FCSA)	28 February 2023	0 months	0 months	28 February 2023
Alternatives Milestone Meeting (AMM)	28 May 2023	3 months	2 months	14 July 2023
Tentatively Selected Plan (TSP)	28 February 2024	9 months	19 months	14 November 2025
Draft Report for Public Review	28 April 2024	2 months	2 months	13 March 2026
Agency Decision Milestone (ADM)	28 September 2024	5 months	2 months	14 October 2026
Division Commander's Endorsement of Final Report	28 August 2025	11 months	6 months	14 March 2028
Chief's Report Milestone	28 February 2026	6 months	0 months	14 September 2028
Total Duration	--	3 years	--	5 years, 7 months



# CONSTRUCTION STATUS

- WSLP-110 contract was awarded on 21 Dec 22
  - 98% Scheduled; 98% Completed
- WSLP-107 contract was awarded on 15 Mar 23
  - 69% Scheduled; 69% Completed
- WSLP-101a contract was awarded on 28 April 23
  - 53% Scheduled; 52% Completed
- WSLP-108 contract was awarded on 25 August 23
  - 51% Scheduled; 50% Completed
- WSLP-104 contract was awarded on 25 August 23
  - 36% Scheduled; 35% Completed
- WSLP-106 contract was awarded on 9 September 23
  - 58% Scheduled; 56% Completed





# CONSTRUCTION STATUS

- WSLP-102 contract was awarded on 14 September 23
  - 36% Scheduled; 36% Completed
- WSLP-105 contract was awarded on 22 September 23
  - 35% Scheduled; 35% Completed
- WSLP-103 contract was awarded on 21 May 24
  - 15% Scheduled; 11% Completed
- WSLP-114a contract was awarded on 23 September 24
  - 10% Scheduled; 6% Completed
- WSLP-109 contract was awarded on 25 September 24
  - 3% Scheduled; 3% Completed
- Pile Load Test Complete



# CONSTRUCTION PHOTOS



WSLP-106 Construction



US Army Corps  
of Engineers®

U.S. ARMY



# CONSTRUCTION PHOTOS



WSLP-107 Construction



US Army Corps  
of Engineers®

U.S. ARMY



# CONSTRUCTION PHOTOS



US Army Corps  
of Engineers®

WSLP-110 Construction Progress



# CONSTRUCTION PHOTOS



WSLP-102 Construction



U.S. ARMY



US Army Corps  
of Engineers®



# CONSTRUCTION PHOTOS



WSLP-108 Construction



US Army Corps  
of Engineers®

U.S. ARMY



# PRE-CONSTRUCTION STATUS

## ST. CHARLES & ST. JOHN CONTRACTS

### ▪ **WSLP-114: Major Pump Stations and Drainage Structures**

- Current Status: P&S Complete
- Contract Advertised: February 2025 🎉
- Contract Award: June 2025

### ▪ **WSLP-103a: Frenier Floodgates**

- Current Status: 65% P&S Complete
- Contract Advertised: September 2025
- Contract Award: November 2025

### ▪ **WSLP-110a: Air Products T-Wall**

- Current Status: 35% P&S Complete
- Contract Advertised: February 2026
- Contract Award: April 2026



# PRE-CONSTRUCTION STATUS MAUREPAS DIVERSION CONTRACTS

- **WSLP-111: Levee from US-61 Raised Hwy Crossing to KCS RR**
  - Current Status: 35% P&S Complete
  - Contract Advertised: May 2026
  - Contract Award: July 2026
  
- **WSLP-112: Levee from KCS RR to CN RR**
  - Current Status: 95% P&S Complete
  - Contract Advertised: September 2025
  - Contract Award: December 2025
  
- **WSLP-113: Levee from CN RR to Mississippi River Levee Tie-In at River Road**
  - Current Status: 35% P&S Complete
  - Contract Advertised: March 2026
  - Contract Award: May 2026





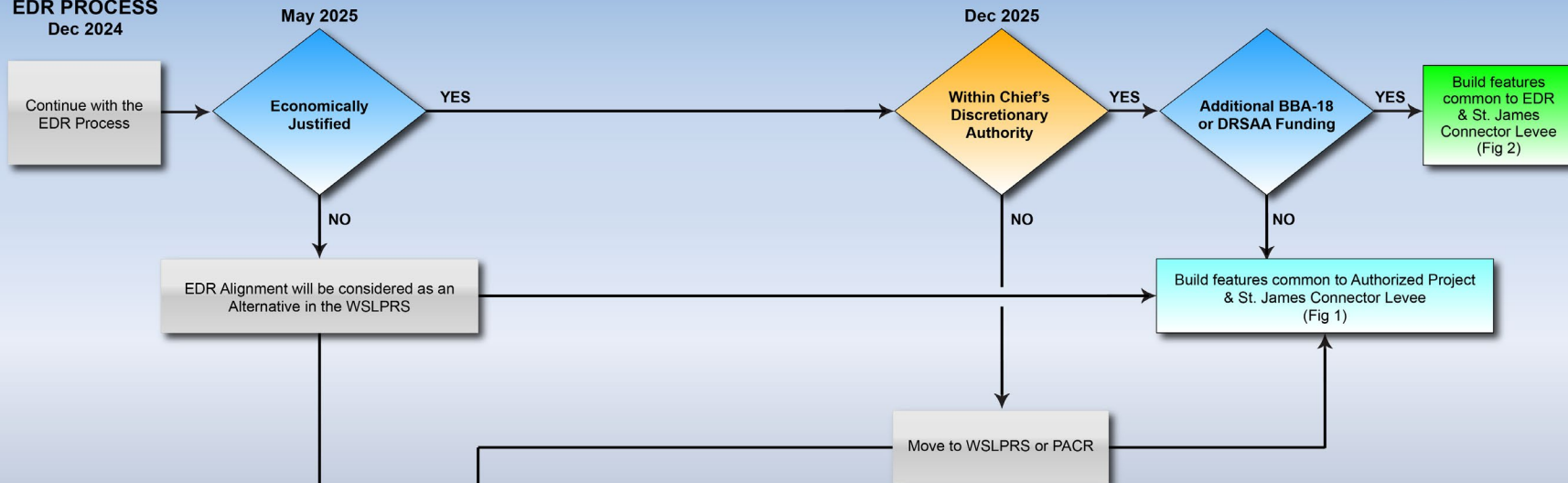
# PRE-CONSTRUCTION STATUS ST. JAMES PARISH



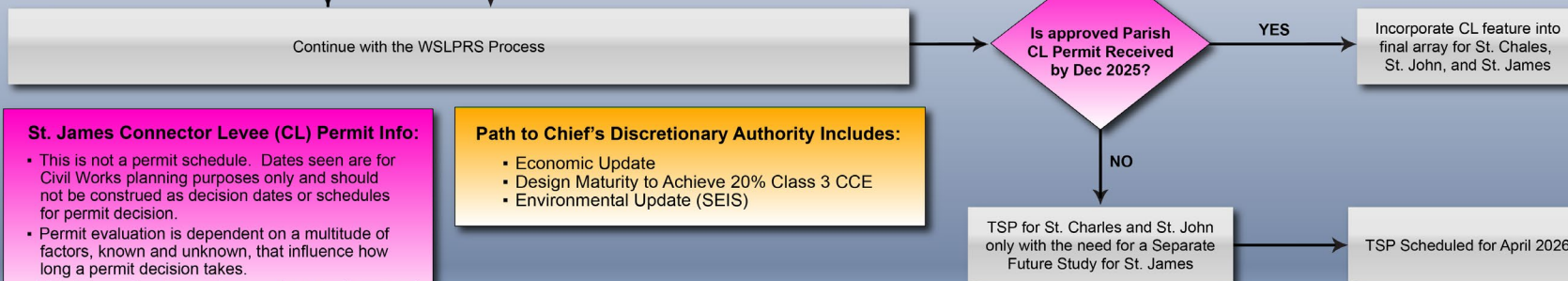
## WSLP Path Forward for Construction in St. James Integration with Parish Connector Levee Permit Request



### EDR PROCESS Dec 2024



### WSLPRS PROCESS



#### St. James Connector Levee (CL) Permit Info:

- This is not a permit schedule. Dates seen are for Civil Works planning purposes only and should not be construed as decision dates or schedules for permit decision.
- Permit evaluation is dependent on a multitude of factors, known and unknown, that influence how long a permit decision takes.
- This information does not guarantee permit approval.

#### Path to Chief's Discretionary Authority Includes:

- Economic Update
- Design Maturity to Achieve 20% Class 3 CCE
- Environmental Update (SEIS)



# PRE-CONSTRUCTION STATUS ST. JAMES PARISH



## WSLP Path Forward for Construction in St. James Integration with Parish Connector Levee Permit Request



Fig 1 - Features common to Authorized  
Project & St. James Connector Levee

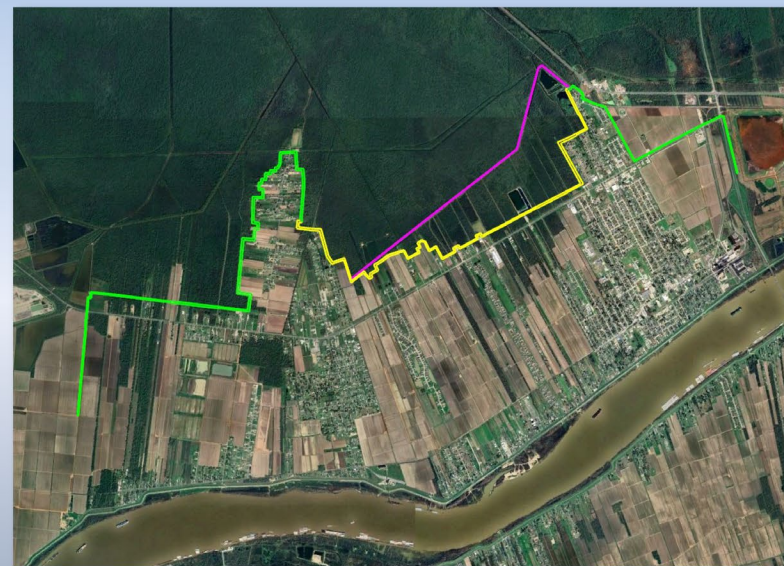


Fig 2 - Features common to EDR  
& St. James Connector Levee



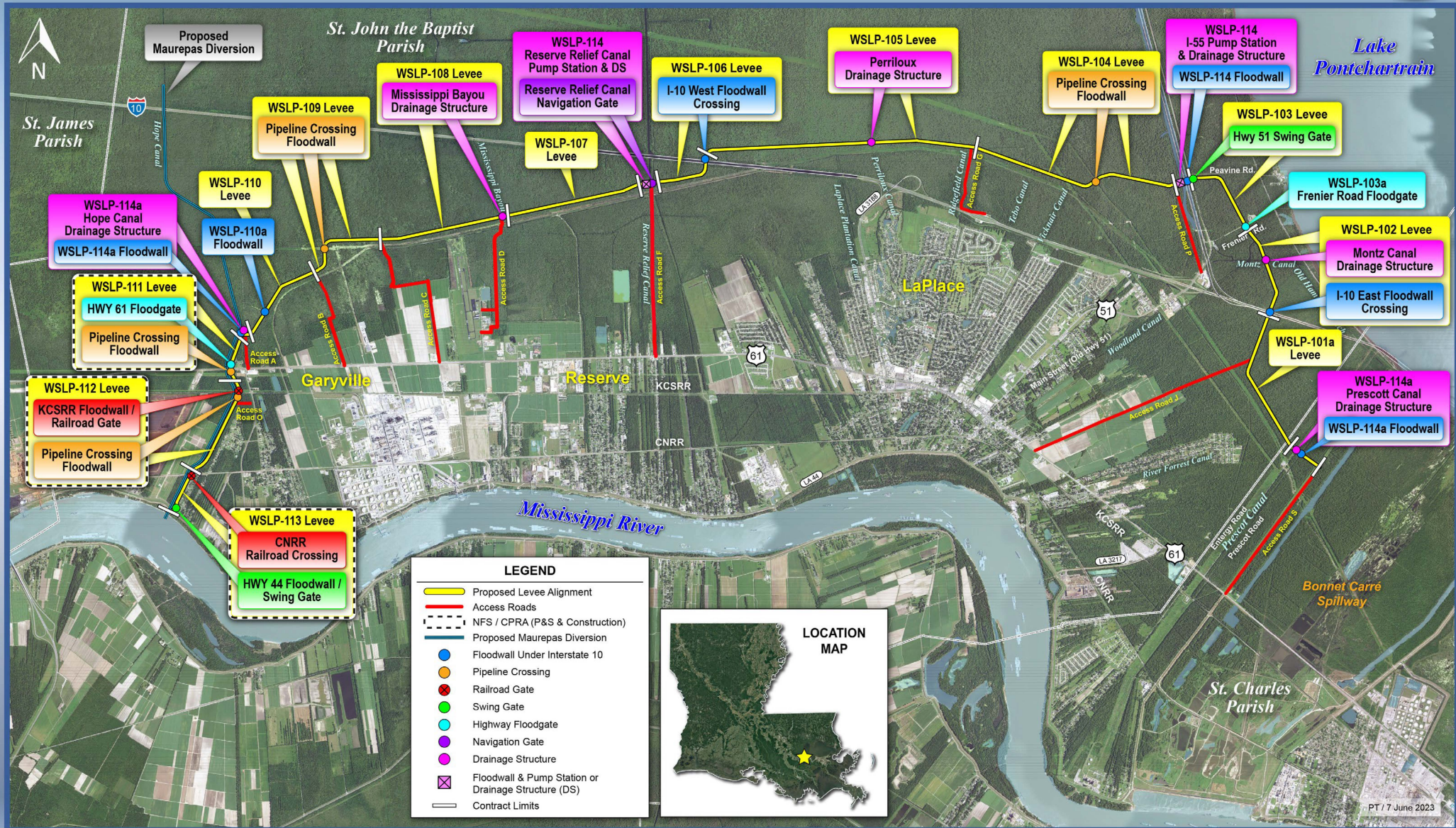
# PRE-CONSTRUCTION STATUS ST. JAMES CONTRACTS

- Identified initial contracts:
  - **WSLP-201: Gramercy Levee**
  - **WSLP-202: Grand Point Levee**
- Path forward for additional contracts is contingent on future decision points:
  - Economic justification
  - Discretionary authorization for changes to project
  - Funding availability
  - St. James Parish Connector Levee Permit status





# West Shore Lake Pontchartrain









# Questions



US Army Corps  
of Engineers®

U.S. ARMY