

FINAL REPORT

JUNE 2018

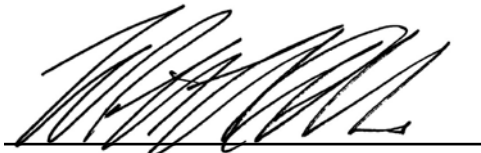
HISTORIC RESOURCES SURVEY OF RESERVE HISTORIC DISTRICT

PREPARED FOR:


ST. JOHN THE BAPTIST PARISH
102 E. AIRLINE HIGHWAY
LAPLACE, LA 70068

R. CHRISTOPHER GOODWIN & ASSOCIATES, INC.
309 JEFFERSON HIGHWAY ■ NEW ORLEANS, LA 70121

HISTORIC RESOURCES SURVEY OF RESERVE HISTORIC DISTRICT



William P. Athens, M.A., R.P.A.
Co-Principal Investigator



Kathryn M. Kuranda, M.Arch.Hist.
Co-Principal Investigator

FINAL REPORT

By

Jill Enersen, M.P.S., Kelly Morgan, M.P.S., Alison Hill, M.P.S.

R. Christopher Goodwin & Associates, Inc.
309 Jefferson Highway, Suite A
New Orleans, LA 70121

June 2018

For

St. John the Baptist Parish
102 E. Airline Highway
LaPlace, LA 70068

TABLE OF CONTENTS

I.	Introduction	1
	Introduction.....	1
	Survey Area and Description	1
	Project Objective.....	1
	Project Personnel	6
	Organization of the Report	6
II.	Research Design and Methodology	7
	The Role of the Historic Context in Resource Evaluation	7
	Archival Research.....	7
	Field Survey Methodology	7
	Data Analysis	8
III.	Historic Context.....	9
	Reserve History.....	9
IV.	Survey Results	17
	Previous Investigations.....	17
	Survey Results	17
	Godchaux-Reserve Plantation House & Godchaux Guesthouse.....	18
	Bungalow.....	18
	Ranch.....	20
	Minimal Traditional Cottage	21
	Shotgun and Double Shotgun	23
	Non-Residential Buildings.....	25
	Late Twentieth-Century Domestic Architecture: New Construction.....	25
	Summary and Conclusions	26
V.	Analysis and Recommendations.....	29
	Local Criteria for Evaluation	29
	Analysis	29
	Period of Significance.....	30
	Contributing versus Non-Contributing Resources	31
	Summary and Recommendations	31
	References Cited.....	49
	Documented Resources in the Reserve Survey Area	Appendix A

LIST OF FIGURES

Figure 1.1	Location Map of Garvyville, Reserve, and LaPlace historic districts in St. John the Baptist Parish, Louisiana.	2
Figure 1.2	U.S. Geological Survey (USGS) of Reserve Historic District within St. John the Baptist Parish, Louisiana.	3-5
Figure 3.1	Excerpt from an 1858 map by Marie Adrien Persac entitled <i>Norman's Chart of the Lower Mississippi River</i> , depicting land encompassing present-day Reserve. Image courtesy the Library of Congress.	10
Figure 3.2	1974 photograph of the Godchaux-Reserve Plantation House. Photograph excerpted from <i>St. John the Baptist Parish: On the Corridor of History</i> (Bank of St. John 1974:21).	10
Figure 3.4	Ca. 1900 photograph depicting the newly-built St. Peter Catholic Church. Photograph excerpted from <i>Down Through the Years</i> (<i>L'Observateur</i> 2010:3).	11
Figure 3.3	Early twentieth century photograph depicting Godchaux Sugars "little dummy engine and crewmen." Photograph located in the vertical files, St. John the Baptist Parish Library.	11
Figure 3.5	Ca. 1900 photograph depicting River Road in Reserve. Photograph excerpted from <i>Precious Gems from Faded Memories: A Pictorial History of St. John the Baptist Parish</i> (Keller et al. 2008:31).	13
Figure 3.6	Maurin Theatre located at 115 West 4th Street. Photograph by R. Christopher Goodwin & Associates, Inc., March 2018.	13
Figure 3.7	Reserve Telephone Company building located at 203 West 4th Street. Photograph by R. Christopher Goodwin & Associates, Inc., March 2018.	14
Figure 3.8	1994 photograph depicting the Godchaux-Reserve Plantation being moved to its current location at 1628 Highway 44. Photograph located in the vertical files, St. John the Baptist Parish Library.	16
Figure 4.1	Bungalow-type dwelling located at 151 West 5th Street. Photograph by R. Christopher Goodwin & Associates, Inc., March 2018.	19
Figure 4.2	Bungalow-type dwelling located at 135 Terrance Street. Photograph by R. Christopher Goodwin & Associates, Inc., March 2018.	19
Figure 4.3	Bungalow-type dwelling located at 428 Central Avenue. Photograph by R. Christopher Goodwin & Associates, Inc., March 2018.	20

Figure 4.4	Ranch-type dwelling located at 193 West 2nd Street. Photograph by R. Christopher Goodwin & Associates, Inc., March 2018.	21
Figure 4.5	Ranch-type dwelling located at 119 West 2nd Street. Photograph by R. Christopher Goodwin & Associates, Inc., March 2018.	22
Figure 4.6	Minimal Traditional-type dwelling located at 229 Hotard Drive. Photograph by R. Christopher Goodwin & Associates, Inc., March 2018.	22
Figure 4.7	Minimal Traditional-type dwelling located at 224 West 2nd Street. Photograph by R. Christopher Goodwin & Associates, Inc., March 2018.	23
Figure 4.8	Double shotgun-type dwelling located at 178 Beech Grove Drive. Photograph by R. Christopher Goodwin & Associates, Inc., March 2018.	24
Figure 4.9	Shotgun-type dwelling located at 117 East 30th Street. Photograph by R. Christopher Goodwin & Associates, Inc., March 2018.	24
Figure 4.10	Non-Residential-type building, Cox’s Meat Market, located at 1186 Highway 44. Photograph by R. Christopher Goodwin & Associates, Inc., March 2018.....	25
Figure 4.11	New Construction-type dwelling located at 279 Hotard Drive. Photograph by R. Christopher Goodwin & Associates, Inc., March 2018.	26
Figure 4.12	New Construction-type dwelling located at 1388 Highway 44. Photograph by R. Christopher Goodwin & Associates, Inc., March 2018.	27
Figure 4.13	New Construction-type mobile home located at 123 East 31st Street. Photograph by R. Christopher Goodwin & Associates, Inc., March 2018.....	27
Figure 4.14	New Construction-type dwelling located at 1288 Highway 44. Photograph by R. Christopher Goodwin & Associates, Inc., March 2018.	28
Figure 5.1	Overview Boundary Map, Sheet Locator Map, and Contributing/Non-Contributing resources.	32-48

CHAPTER I

INTRODUCTION

Introduction

This report presents the results of a reconnaissance-level architectural survey of the Reserve Historic District. This investigation was undertaken by R. Christopher Goodwin & Associates, Inc. (RCG&A), on behalf of St. John the Baptist Parish. All work was conducted in accordance with the Scope of Work developed by St. John the Baptist Parish; the Secretary of the Interior's *Standards for Archeology and Historic Preservation; National Register Bulletin 24: Guidelines for Local Surveys: A Basis for Preservation Planning; Criteria for Designation of Historic Districts and Local Landmarks* (Section 114-28[d]) of St. John the Baptist Parish Historic District Commission Ordinance 17-27, and *Louisiana Historic Resource Inventory Guidelines*.

Survey Area and Description

The Reserve Historic District is located in St. John the Baptist Parish, Louisiana (Figure 1.1, Figure 1.2). The local district boundary as established in Section 114-29 Designated Historic Districts of the St. John the Baptist Parish Historic District Commission Ordinance 17-27 is reflected in Figure 1.3. St. John the Baptist Parish is situated along the Mississippi River between Baton Rouge and New Orleans. The Mississippi River bisects the Parish into northern or "east bank" and southern or "west bank" portions.

In 2016, the St. John the Baptist Planning and Zoning Department and the Historic Preservation Study Committee partnered with graduate students with the University of New Orleans Master of Urban and Regional Planning program to develop a historic preservation plan for the parish. This effort resulted in the preparation of a report entitled *Protecting the Future by Preserving the Past: A Report to the St. John the Baptist Parish Historic Preservation Study Committee*. The plan identified the presence of four potential

historic districts: Garyville, LaPlace, Reserve, and Westbank River Road.

In May 2017, the Historic Preservation Study Committee recommended that the Planning Commission and Parish Council establish four local historic districts, create a Historic Preservation District Commission, adopt a preservation ordinance, and "utilize the survey results from the University of New Orleans report to administer the preservation ordinance until a full survey can be conducted by a professional historic preservation firm" (St. John the Baptist Parish Historic Preservation Study Committee 2017). The Garyville, LaPlace, Reserve, and Westbank River Road historic districts and their boundaries formally were adopted by the St. John the Baptist Parish Council in July 2017 and codified in Chapter 114 – Historic Preservation of Ordinance 17-27.

In January 2018, St. John the Baptist Parish contracted RCG&A to identify and evaluate resources applying *Criteria for Designation of Historic Districts and Local Landmarks* (Section 114-28[d]) of St. John the Baptist Parish Historic District Commission Ordinance 17-27 and to identify contributing and non-contributing resources in the Garyville, LaPlace and Reserve local historic districts. This project has been partially funded through the Historic Preservation Fund (HPF), administered through the National Park Service (NPS), U.S. Department of the Interior, through the Louisiana State Historic Preservation Office (LASHPO), a component of the Office of Cultural Development.

Project Objective

The objective of this project was to survey and evaluate built resources within the Reserve Historic District in St. John the Baptist Parish, Louisiana. Built resource evaluations were conducted applying *Criteria for Designation of*

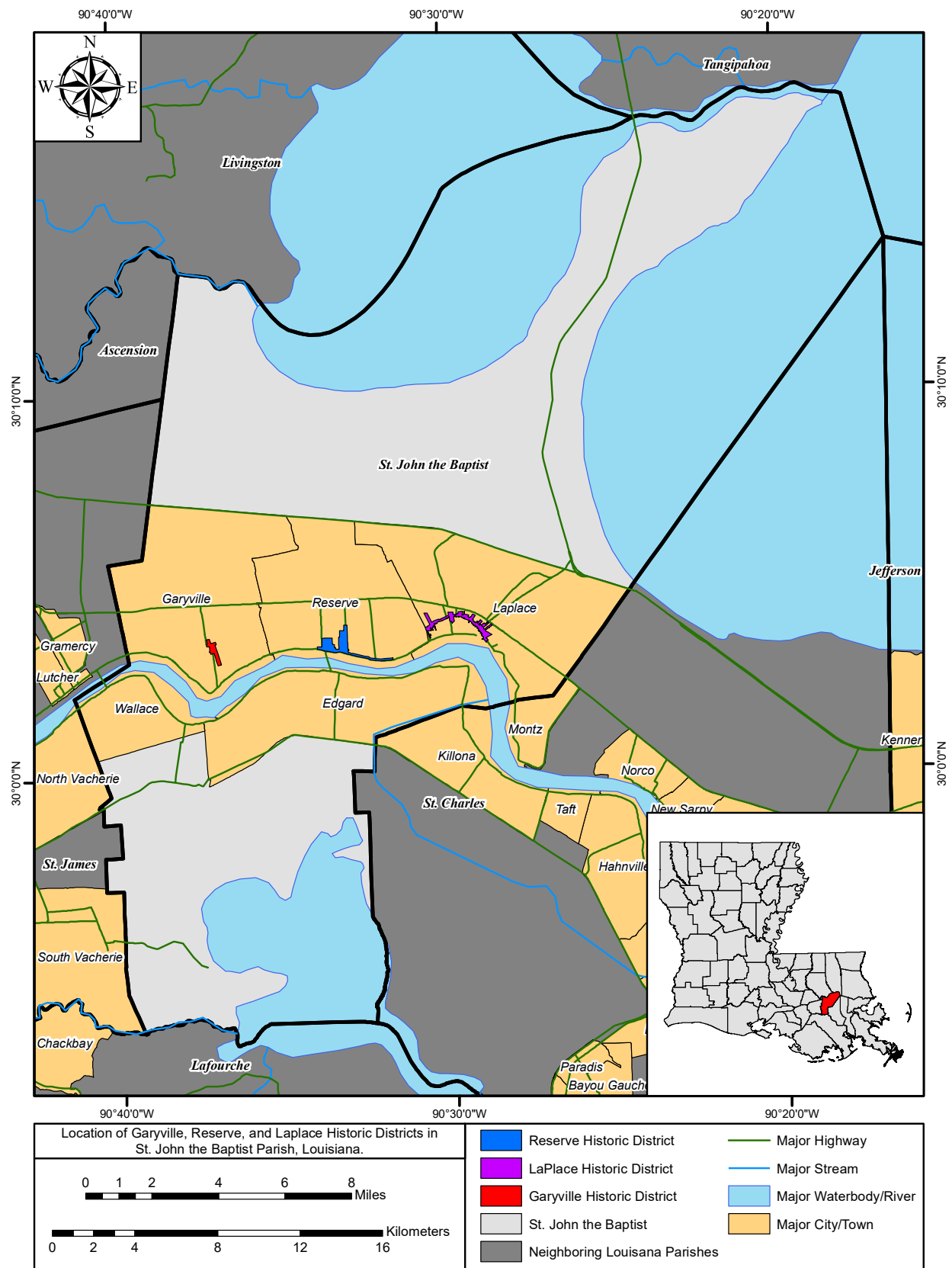


Figure 1.1 Location Map of Garvyille, Reserve, and LaPlace historic districts in St. John the Baptist Parish, Louisiana.

Figure 1.2 U.S. Geological Survey (USGS) of Reserve Historic District within St. John the Baptist Parish, Louisiana.
Sheet 1

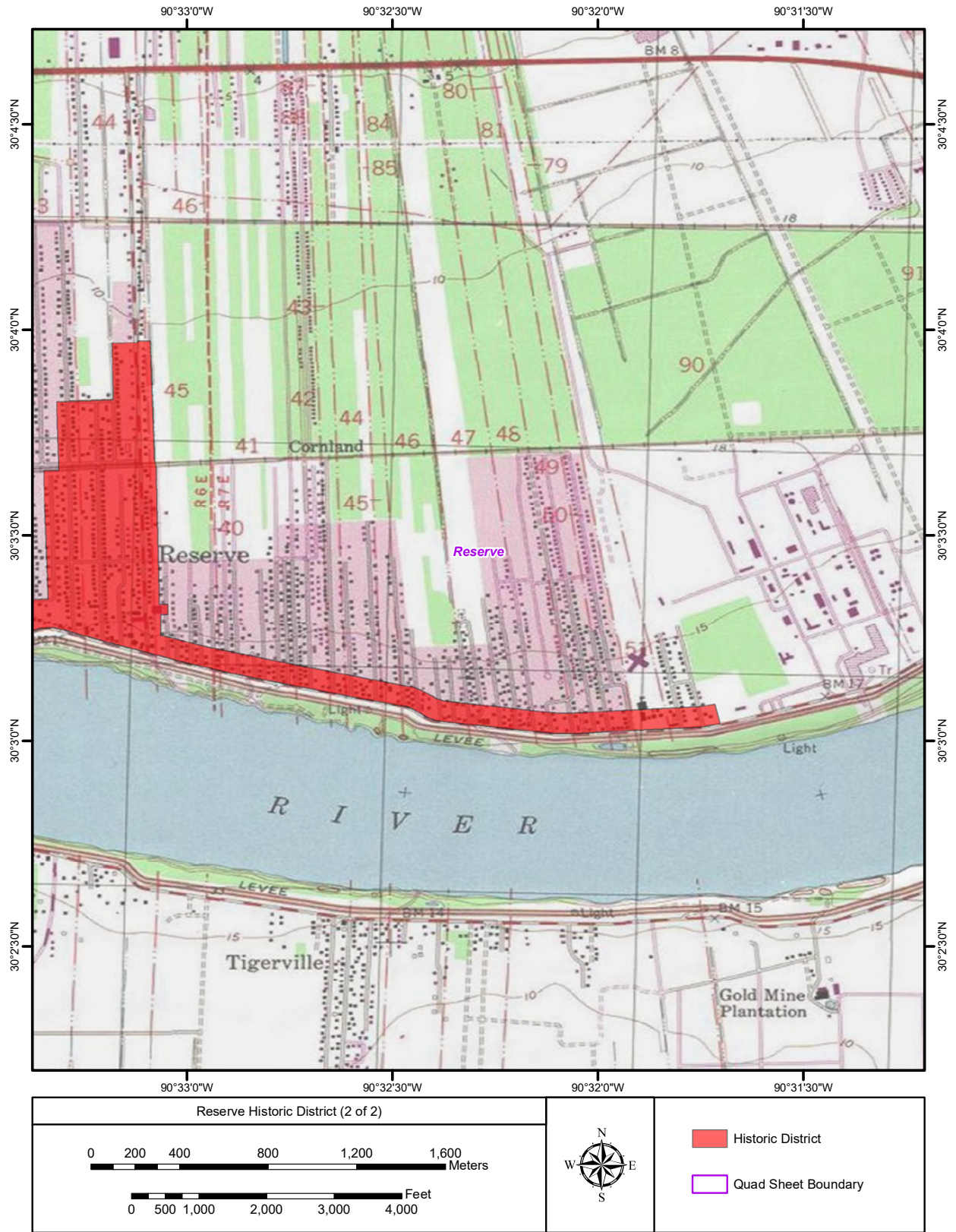


Figure 1.2 U.S. Geological Survey (USGS) of Reserve Historic District within St. John the Baptist Parish, Louisiana. Sheet 2

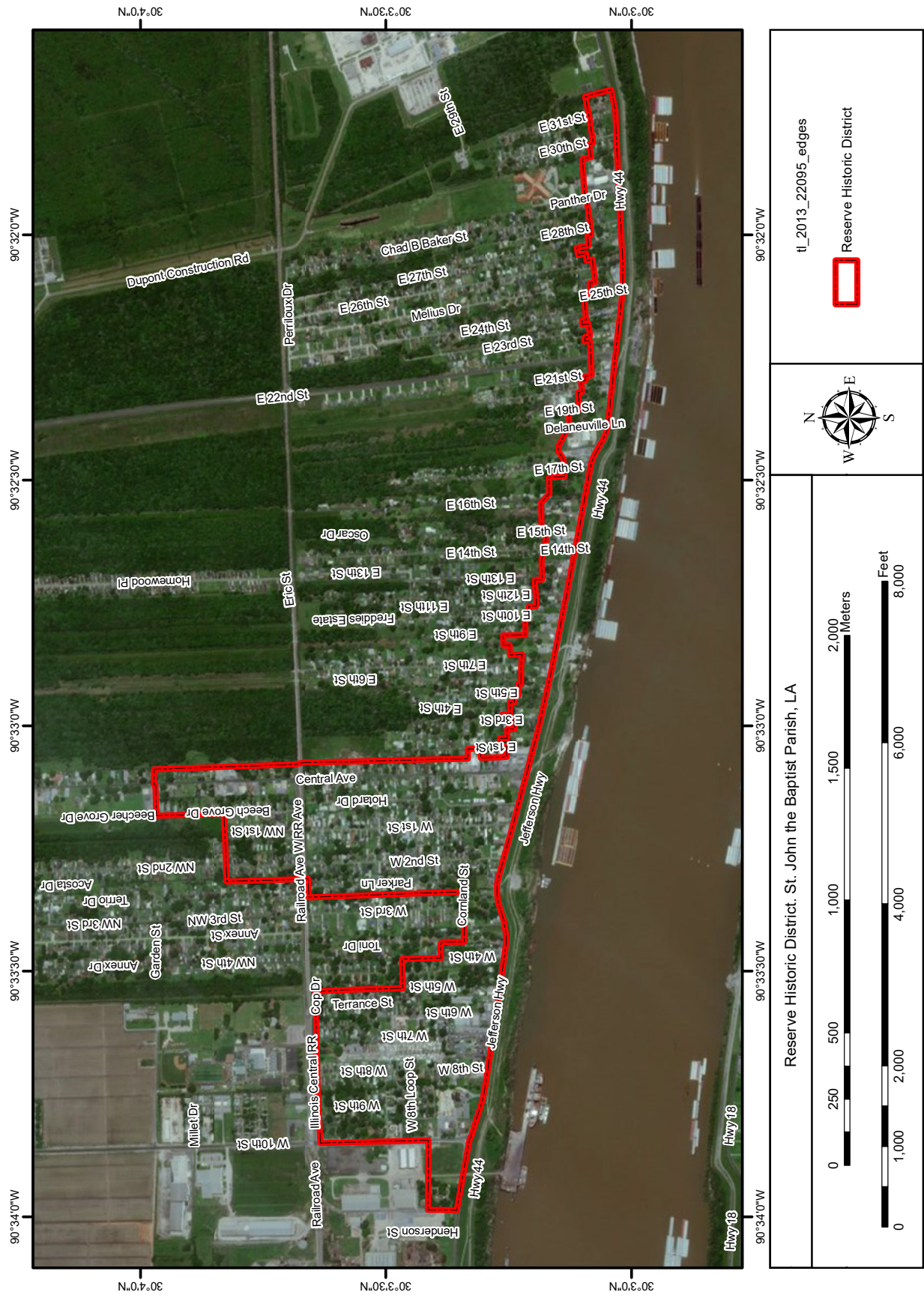


Figure 1.3 Reserve Historic District Survey Boundary.

Historic Districts and Local Landmarks (Section 114-28[d]) of St. John the Baptist Parish Historic District Commission Ordinance 17-27. Individual *Louisiana Historic Resource Inventory Guidelines* (LHRI) survey forms were prepared for built resources 50 years old or older in accordance with the standards and guidelines developed by the Louisiana Office of Cultural Development, Division of Historic Preservation (LDHP 2018).

Project Personnel

All work was completed in accordance with guidelines set forth in the Secretary of the Interior's *Standards and Guidelines for Archeology and Historic Preservation*. All work was undertaken by project staff who meet or exceed the

Secretary of the Interior's professional qualifications in the disciplines of history, architectural history, and/or historic preservation.

Organization of the Report

Chapter 1 contains a brief description of this survey project. The research design and methodology are described in Chapter 2. Chapter 3 provides a historic and thematic context for the Reserve Historic District. Chapter 4 presents the results of the current architectural investigations. Survey recommendations are provided in Chapter 5. Appendix A includes a list of all resources surveyed within the district. LHRI forms prepared for all built resources constructed before 1969 are presented in Appendix B.

RESEARCH DESIGN AND METHODOLOGY

The Role of the Historic Context in Resource Evaluation

This project was completed through an integrated program of archival research, field investigations, and data analysis. Archival research was conducted to develop an overview of the survey area's history to identify the period(s) of significance, and to establish appropriate historic contexts for identification and assessment of significance (St. John the Baptist Parish Council Ordinance 17-27 Section 114-28[d]).

Archival Research

Archival research was undertaken to refine the historic context for the survey area, and to elucidate chronological periods of development and important historic themes. The resulting historic context provided a framework for identifying and assessing built resources within the appropriate temporal, geographic, and thematic frameworks. Archival research included review of primary and secondary source materials pertaining to the history of Reserve. Repositories consulted included the St. John Parish Library and Conveyance Office, St. John Clerk of Courts. Additional resources consulted included historic photos and aerials, United States Census records, digitized newspaper databases, and National Register nominations and associated documentation for the survey areas.

Field Survey Methodology

St. John the Baptist Parish provided shapefiles and preliminary survey data from the University of New Orleans (UNO) survey report previously mentioned. These data were used as the basis for survey field maps. The UNO survey data as well as the current map of the Reserve Historic District currently have 1692 Highway 44, the westernmost parcel within the district, as an "empty lot". However, according to the St. John

the Baptist Parish Historic District Commission Ordinance 17-27, the boundary south of Railroad Avenue includes "...all property abutting West 10th on the Eastern side of the street, with the addition of the Reserve-Godchaux House Caretaker House parcel along the Western side of the street at the intersection of West 10th and Louisiana Highway 44" (St. John the Baptist Parish Council Ordinance 17-27 Section 114-29[a]). As a result, this building was included in the survey data.

Additionally, the current boundary along the eastern portion of the Reserve Historic District from Central Avenue to E. 31st Street includes all property within 300 ft of the centerline of Louisiana Highway 44. *National Register Bulletin Defining Boundaries for National Register Properties* and *National Register Bulletin: How to Apply the National Register Criteria for Evaluation* require boundaries to encompass the entire resource. Therefore, buildings that either were crossed or appeared to be bordering the 300 ft boundary were surveyed and included in the survey data.

Field survey of the built resources was undertaken applying the guidelines set forth in *National Register Bulletin 24: Guidelines for Local Surveys: A Basis for Preservation Planning* and the *Louisiana Historic Resource Inventory Guidelines*. All architectural field work was conducted from public rights-of-way. Two architectural historians surveyed the Reserve Historic District between March 20 and 27, 2018. Team members also completed digital architectural data sets, which were supplemented by digital photographs executed according to photography standards developed by the National Park Service.

Survey data were recorded using the Fulcrum mobile data collection application on handheld smart mobile devices containing GPS with up to sub-meter accuracy. Survey data were en-

tered manually into the devices. The Fulcrum data collection application for the surveys included all the data fields on the Louisiana Historic Resource Inventory (LHRI) form. The data collected included building type, architectural style, approximate date of construction, plan type, foundation, principal exterior materials, and roof type and material. Character-defining features, building modifications/alterations, and historical or architectural importance also were recorded. Survey data were reviewed for completeness and accuracy.

Data Analysis

Following field investigations, survey and archival data were analyzed, and individual LHRI forms were produced for resources constructed before 1969. Resources were assessed individually and collectively to determine their potential significance and integrity within the appropriate historic context. Contributing and non-contributing resources to the Reserve Historic District also were identified. *Criteria for Designation of Historic Districts and Local Landmarks* (Section 114-28[d]) of St. John the Baptist Parish Historic District Commission Ordinance 17-27 served as the primary guidance for these analyses.

CHAPTER III

HISTORIC CONTEXT

This chapter provides a summary overview of the history and development of Reserve. Important themes and contexts shaping development also are presented.

Reserve History

The area currently known as Reserve is located in St. John the Baptist Parish, established, along with 19 other civic parishes, in 1807 following the Louisiana Purchase of 1803. Land encompassing the present-day community of Reserve included and was bound by several large sugar plantations during the nineteenth century. An 1858 map depicts the plantations, which occupied large, narrow parcels that extended north from the Mississippi River (Figure 3.1). The boundaries of the community of Reserve generally lie along the Mississippi River beginning with the original plat for the Reserve Plantation, located upriver, and the Belle Pointe Plantation plat, located downriver, which includes property from other plantations. Agriculture dominated the local economy. The National Register-listed Godchaux-Reserve Plantation House is representative of the plantation houses that characterized the area.

A number of families owned the property featuring the Godchaux-Reserve Plantation before it was acquired by Leon Godchaux. The property where the Godchaux-Reserve Plantation house is located originally was settled by Jean Baptiste Laubel in 1764 and measured 6 arpents by 40 arpents. Laubel's sons divided and sold the property in 1809. Brothers François and Elisée Rillieux, who were free people of color, acquired the property in 1822. The Rillieux brothers later established a sugar plantation on the property. The plantation dwelling represents three periods of construction, including a late-eighteenth century dwelling that was expanded and renovated ca. 1825 and again during the 1850s (Figure 3.2)

(Sternberg 1996; National Register Staff, Louisiana Division of Historic Preservation [NRS] 1993). In 1833, Antoine Boudousquie purchased the property and named it Reserve Plantation, which is illustrated on the 1858 map of the area (Sternberg 1996).

The community surrounding the survey area changed names several times before being referred to as Reserve. At this time, the area of present-day Reserve, including its counterpoint on the west bank of the river, was referred to as Bonnet Carré. The desire of residents of the present Reserve area and surrounding communities for a Catholic church resulted in the construction of a Gothic-style wood-frame church in 1864. Following the establishment of the St. Peter Catholic Church in present-day Reserve, the community was referred to as St. Peter.

Eventually the Reserve Plantation property was acquired by Leon Godchaux, who established the Godchaux Sugar Company in 1869 on the parcel. Establishment of the Godchaux Sugar Company provided the basis for the influx of new residents and what would become the community known as Reserve (Gray 1999). In 1868, Morris Edrington acquired Cornland Plantation within the Reserve area from James Humphreys and operated the Cornland Sugar Factory until 1916, further expanding the sugar industry within Reserve (Keller et al. 2008:17). Establishment of the Reserve community is evident by the implementation of a post office in 1870. After the railroad station was relocated to Reserve Plantation in 1883, the community became known as Reserve (Figure 3.3) (Sternberg 1996; Gray 1999).

As the congregation of St. Peter's grew, a larger church became necessary. A stone church replaced the previous building in 1900 on the location of the current St. Peter's (Figure 3.4). Hurricane Betsy damaged the church in 1965; the current church, constructed in 1967, replaced

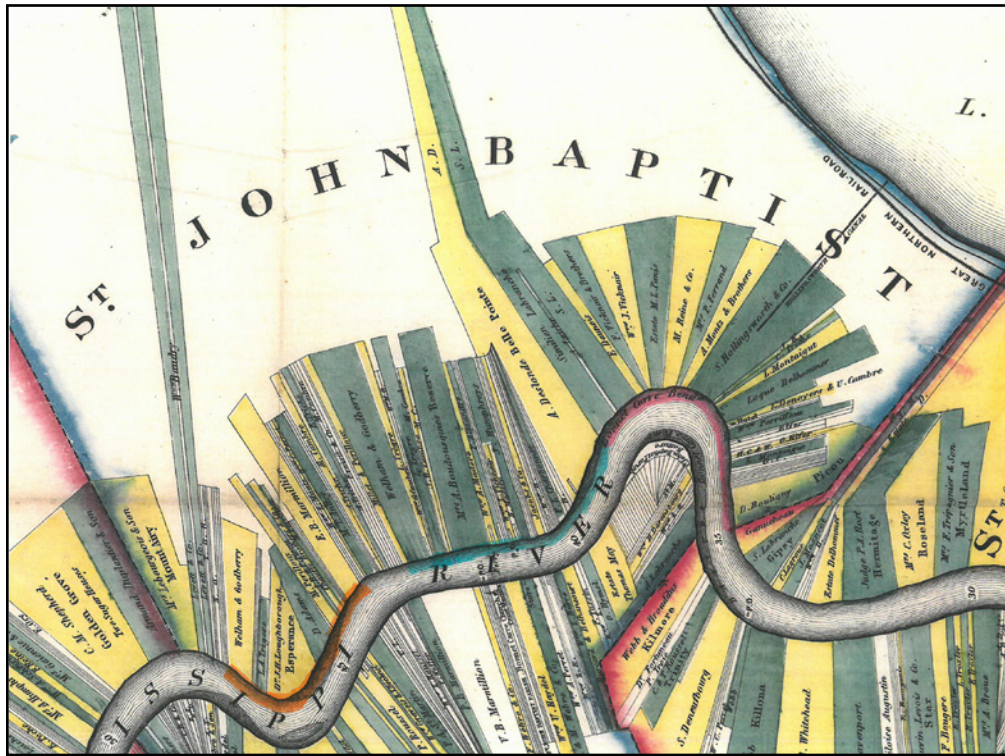


Figure 3.1 Excerpt from an 1858 map by Marie Adrien Persac entitled *Norman's Chart of the Lower Mississippi River*, depicting land encompassing present-day Reserve. Image courtesy the Library of Congress.



Figure 3.2 1974 photograph of the Godchaux-Reserve Plantation House. Photograph excerpted from *St. John the Baptist Parish: On the Corridor of History* (Bank of St. John 1974:21).



Figure 3.3 Early twentieth century photograph depicting Godchaux Sugars "little dummy engine and crewmen." Photograph located in the vertical files, St. John the Baptist Parish Library.

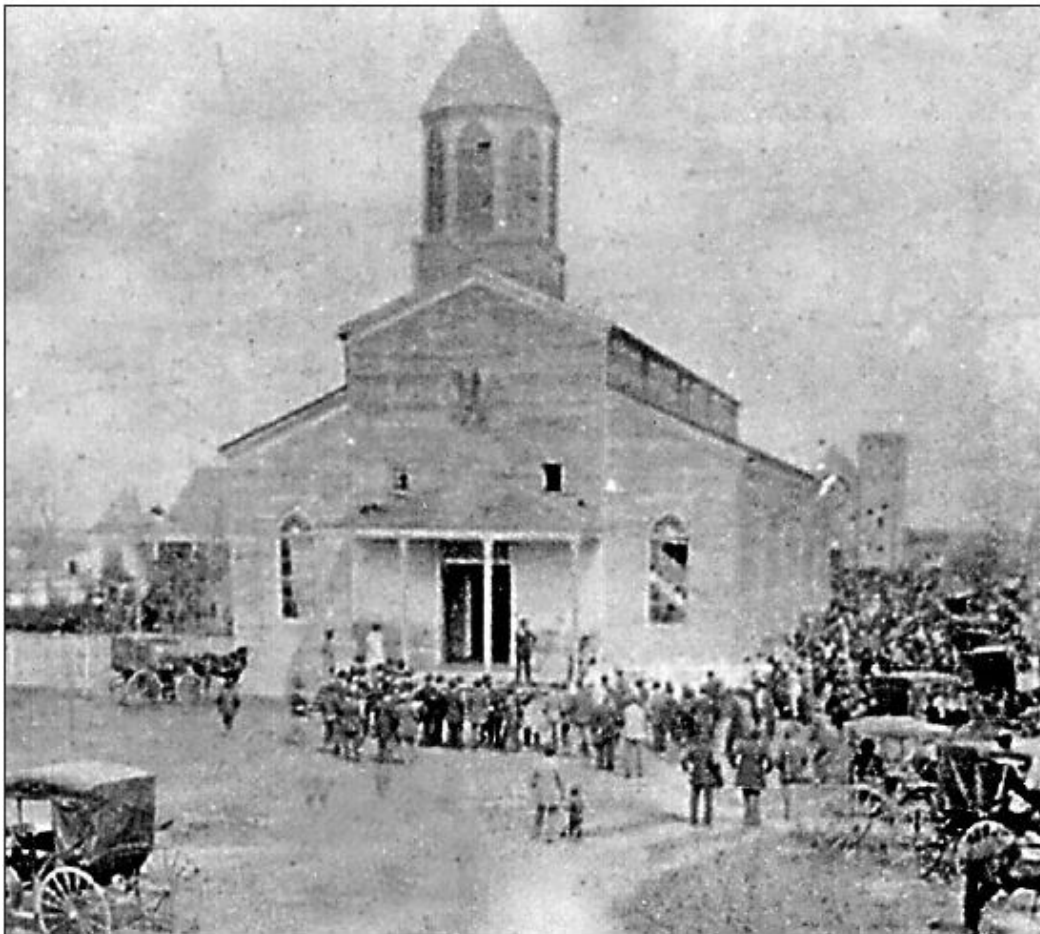


Figure 3.4 Ca. 1900 photograph depicting the newly-built St. Peter Catholic Church. Photograph excerpted from *Down Through the Years* (*L'Observateur* 2010:3).

the earlier building. The accompanying cemetery dates to the original period of construction, with the earliest internment dating to 1871 (Sternberg 1996; Gray 1999).

Turn-of-the-century prosperity was evident for the enterprise, as the Godchaux plantation had doubled in size by 1893 (NRS 1993:8.2). The Godchaux family constructed a substantial summer home located directly across from the refinery ca. 1900 (Leslie 1984; Sternberg 1996:128). The dwelling later became known as the Guesthouse because it occasionally was occupied by the family. The dwelling currently faces Highway 44 near the entrance to the Globalplex Intermodal Terminal. The Godchaux family came to own nearly all of the sugar plantations in the area and others within the region. The Godchaux's also owned the Star, Sunnyside, and Belle Pointe plantations within the area of Reserve and the Diamond Plantation located in St. Charles Parish. In 1914, the Belle Pointe Dairy was established under the Godchaux ownership and included a soft-drink bottling plant, St. Peter's Bottling Works, until circa 1947 (Gray 1999).

Reserve, along with much of St. John the Baptist Parish, grew at the turn of the twentieth century as the area attracted the services necessary for a thriving community (Figure 3.5). A country store, originally established by Godchaux Sugars for its workers, was acquired by a local family in 1904 and became a privately-owned store serving the community. The same year, the Bank of St. John was established on River Road (Bank of St. John 1974). Beginning in the early twentieth century and lasting into the 1950s, Reserve farmers incorporated rice production into the area (Keller et al. 2008:18). President William Howard Taft visited the community of Reserve in 1909. President Taft, along with 117 senators and congressmen, 24 governors, and 3 diplomats, travelled on the steamship "Taft's Fleet" to the Louisiana community. Taft spoke on a platform arranged in front of the Godchaux Plantation house concerning waterway improvements (Bank of St. John 1974).

The area of Reserve also grew by absorbing small, surrounding communities during the early twentieth century. Surville Town, named for Surville Montz and later called Silver Town, is lo-

cated in what now is the lower part of Reserve. Additional communities include Kansas Town in the upper part of town; Jacobtown; a portion of the Reserve Plantation called New Town; Cornland Place, named after Cornland Plantation; and Dutch Bayou, located behind Kansas Town. Rag Town, named after a local ragtime band, was an African-American settlement that also became part of Reserve (Gray 1999).

Until the early twentieth century, education was administered by local churches and tutors. Leon Godchaux High School, the first public school constructed in Reserve, was completed in 1909 for \$15,000 (Bank of St. John 1974). The Godchaux sugar plantation grew to concentrate on the milling and processing of sugar. A fire destroyed the original mill in 1918, and the facility subsequently was rebuilt and a refinery added to the complex located immediately west of the survey area on present-day W. 10th Street (Gray 1999). A two-story clubhouse and associated recreational facilities were constructed in 1921 on W. 10th Street adjacent to the sugar mill for Godchaux employees and their families. The clubhouse originally included an auditorium and movie theater, pool room, library, gymnasium, and refreshment room. A baseball field, tennis court, and dance pavilion were provided next to the clubhouse. In 1938, a swimming pool was added directly across W. 10th Street from these facilities, located within the survey area (Gray 1999). Aerial photographs suggest these buildings were demolished between 1998 and 2005; the swimming pool and its facilities remain extant.

As the community continued to grow, a number of commercial, religious, and entertainment venues were constructed. These included a new Godchaux High School in 1931; Our Lady of Grace Catholic Church in 1932; St. Peter's Parochial School in 1930; and, Maurin's Theatre in 1931 (Figure 3.6). These buildings were dispersed throughout the community. The new school was located to the west of the Godchaux Sugar Refinery, outside the survey area; the new church was built substantially north of the railroad, outside the survey area; and the theater was constructed on W. 4th Street, near River Road (Bank of St. John 1974; Sternberg 1996).



Figure 3.5 Ca. 1900 photograph depicting River Road in Reserve. Photograph excerpted from *Precious Gems from Faded Memories: A Pictorial History of St. John the Baptist Parish* (Keller et al. 2008:31).



Figure 3.6 Maurin Theatre located at 115 West 4th Street. Photograph by R. Christopher Goodwin & Associates, Inc., March 2018.

New businesses established during the 1920s and 1930s included a “contract carrier service” and a telephone service. In 1927, Etienne X. Hotard established what would become the Hotard Bus Line, Inc., and Daniel Madere founded the first local telephone service provider, Reserve Telephone Company (Figure 3.7). Serving 15 customers at its startup, the Reserve Telephone Company grew to serve 100 subscribers within the Reserve-Garyville area by 1939. The company was one of the first full-service telecommunications providers in the country, enhancing the area by employing predominantly parish residents (Bank of St. John 1974; *L’Observateur* 2010).

According to the 1940 census, Reserve residents were employed in the sugar plantation and refinery industry (U.S. Bureau of the Census 1940). After World War II, St. John the Baptist

Parish elected officials encouraged industry to locate along the banks. Abundant labor and land, close proximity to an electrical plant, and access to two major cities via railroads and highways made Reserve a prime location for new industries, including DuPont, which purchased 600 acres on the original plat of the Belle Pointe Plantation. The company went on to construct a \$25 million plastics factory (Bank of St. John 1974). Beginning with the introduction of DuPont to the area, 1950 to the 1970s represents an evolution of the economy from one that was agriculturally based to one that was industrially based.

Beginning in the mid 1950s, residential development expanded throughout the parish. Increased population growth resulted in the implementation of a ferry between Edgard on the west bank and Reserve. This growth in residential construction was the result of new ownership of



Figure 3.7 Reserve Telephone Company building located at 203 West 4th Street. Photograph by R. Christopher Goodwin & Associates, Inc., March 2018.

the Godchaux Sugar Refinery. In 1957, the controlling stock interest in the Godchaux Sugar Refinery in Reserve and LaPlace was purchased by William Zeckendorf of New York. The company name was changed to Gulf States Land and Industries, and the same year it was sold to National Sugars, and the facility was converted solely to sugar refining. The company subsequently was sold to Southern Industries Corporation of Mobile, Alabama, and the name was changed to the Godchaux-Henderson Sugar Company, Inc. (Sternberg 1996).

Plans were formulated by the company, now named Landmark Land Company, Inc., to construct several residential communities within the area. As part of these plans, a community called Riverlands was projected to ultimately contain 4,000 dwellings and 20,000 residents. Star Terrace was planned in 1968 and proposed the construction of 60 dwellings, sited west of the survey area. As more development and community amenities were being planned, approximately 6,000 residents had settled in the various developments by the Landmark Land Co. by 1974 (Bank of St. John 1974).

In 1965, a resolution was adopted by the parish police jury in favor of the construction of a public grain elevator in Reserve. The issue received ample coverage as many local residents were opposed to the proposal. The South Louisiana Port Commission planned to build a public grain elevator costing \$8.5 million for a 25-year lease to the Bayside Warehouse Company from Texas. Citizens were opposed to the potential harmful effects to local residents and the adjacent water purification plant posed by the grain dust (Lucia 1965a). The Commission voiced their plans to use \$800,000 to implement modern dust-control technologies in their facility. In addition, the plant was expected to employ more than 200 people, accommodating the recent population growth within the parish. The grain elevator was built on a plat bound by the river, Star Road, the railroad lines, and the parish water purification plant, located west of the survey area. Following concerns from the community for the potential decline of the sugar refinery, the Commission also agreed to build a leased pier for the loading and unloading of products. Construction of the

pier was anticipated to make the refinery more competitive, particularly since other refineries in the area had their own loading docks (Lucia 1965b, 1965c).

With the introduction of loading centers for petrochemical products and the establishment of grain elevators, the parish, and in turn Reserve, began to shift from a primarily agricultural economy to an industrial center in the 1970s. In Reserve, sugarcane production began to decline as industry increased. This increase was partially facilitated by the Airline Industrial Park, the leading industrial park in the parish, in 1979. This economic expansion resulted in an increase in population and amenities catering to residents such as retail centers. By this time, St. John the Baptist Parish was experiencing growth of its own beyond “a bedroom community of New Orleans.” Sugarcane fields were being developed into residential neighborhoods to accommodate this population growth. Additional factors such as the expansion of the New Orleans airport and the construction of Interstate 10 contributed to the growing economy (Cranow 1979).

As further industrial development was being planned and as the population continued to grow, civic, cultural, and educational amenities were proposed in tandem. In 1970, a school serving kindergarten through high school, Riverside Academy, was constructed near the previous site of the Illinois Central Railroad Depot, north of the survey area. Reserve held the St. John the Baptist School Board Headquarters and the River Parishes Vocational-Technical School. Feasibility studies were completed for a potential local airport in Reserve (Bank of St. John 1974; Cranow 1979). A regional airport owned by St. John the Baptist Parish, currently the Port of South Louisiana Executive Regional Airport, was constructed in Reserve northwest of the survey area in the 1980s. Residents petitioned the local government to provide a regional cultural center in 1974, and by 1981, the vacant Maurin’s Theatre in Reserve was acquired by the parish to function as a community center. Funds were provided by the Parish Council and the property was converted to a cultural center (Tri-Parish Telephone Directory 2001).



Figure 3.8 1994 photograph depicting the Godchaux-Reserve Plantation being moved to its current location at 1628 Highway 44. Photograph located in the vertical files, St. John the Baptist Parish Library.

The Godchaux-Henderson Sugar Co. closed its doors in 1985, and a narrow-gauge locomotive used for hauling sugarcane from the fields to the refinery was given to Disneyland for use at its California amusement park. The property currently is part of Port of South Louisiana, known as Globalplex, including the Godchaux Guesthouse that is used for business meetings and special events (Port of South Louisiana n.d.; Sternberg

1996). In 1993, the River Road Historical Society moved the Godchaux-Reserve Plantation House to the corner of W. 10th Street and River Road to avoid demolition (Figure 3.8). During the relocation, evidence surfaced suggesting the house was subject to a prior move. The Reserve area continues to be prominently residential in nature and supported by industrial and agricultural uses.

CHAPTER IV

SURVEY RESULTS

This chapter provides a summary of previous architectural investigations in the Reserve survey area as well as the results of the current architectural inventory.

Previous Investigations

A review of the National Register of Historic Places database maintained by the Louisiana Office of Cultural Development, Division of Historic Preservation identified one individually-listed National Register property in the Reserve survey area. The Godchaux-Reserve Plantation House currently reflects ca. 1850 renovations. It has undergone two moves, one prior to 1900 and one in 1993. The building currently is located at 1628 Louisiana Highway 44, at the site of the 1993 relocation. The building was listed in the National Register of Historic Places in 1994 and is significant under Criterion C as a substantial example of French Creole architecture within the State of Louisiana and St. John the Baptist Parish, as well as having significance at the local level as the namesake for the community.

Many of the resources in Reserve previously were recorded in Louisiana Historic Resource Inventory forms in the mid-1980s, including the Godchaux Guesthouse (Leslie 1984). During the mid-1980s, many of the properties were identified by Post Office Box rather than street address. Other properties were identified by the street name and street number. However, those properties identified by address have since been renumbered. Reconciling the properties identified by Post Office Box and previous address in the previous investigations with the addresses recorded during the current investigation was beyond the scope of work.

The University of New Orleans Department of Planning and Urban Studies undertook an architectural survey of Reserve in fall 2016 for the purposes of recommending a “historic preserva-

tion strategy” to the St. John the Baptist Parish (Department of Planning and Urban Studies, University of New Orleans 2017:i). The boundaries of this 2016 survey coincide with those of the current survey area. The UNO team surveyed 607 resources and identified 343 as contributing elements to a potential local historic district. The results of the survey were presented in a 2017 report entitled *Protecting the Future by Preserving the Past: A Report to the St. John the Baptist Parish Historic Preservation Study Committee*, which provided the basis for the local designation of the Reserve Historic District in July 2017 (St. John the Baptist Parish Council Ordinance 17-27 Section 114-29[a][1]).

Survey Results

The current survey area follows Louisiana Highway 44 on the southern border and extends north with a predominantly grid system of streets. The current local historic district boundaries fall within these general boundaries: extending to W. 10th Street on the west; extending to Railroad Avenue on the north and beyond in the western portion; extending to E. 31st Street on the east; and Highway 44 on the south. The district is substantially larger in the western portion, and east of Central Avenue, the area is limited to a 300-ft setback from Highway 44. The boundaries of the current survey area coincide with those of the local Reserve Historic District, which was designated in 2017 (St. John the Baptist Parish Council Ordinance 17-27 Section 114-29[a][1]).

The grid system of streets roughly extends in north-south and east-west directions. In general, dwellings are regularly placed on lots, and lots slightly vary in size. Some lots in the eastern portion of the survey area generally follow the configuration as depicted on the 1858 map of the area, and consist of long, narrow plats of land along the river; gridded streets intersperse some

of these lots. The survey area consists of modest residential lots featuring minimal landscaping consisting of trees and shrubbery. The majority of streets lack sidewalks and curbs. Generally, commercial buildings are scattered along Highway 44. Two small commercial centers are located on W. 7th Street near the intersection of Highway 44, by St. Peter Catholic Church, and along Central Avenue near its intersection with Highway 44. Public buildings on Central Avenue, Highway 44, and W. 7th Street include a post office and three schools. The St. John the Baptist Parish School Board Office and the St. John the Baptist Parish Library-Reserve Branch are located on W. 10th Street at the corner of Highway 44. Highway 44, or River Road, functions as the primary thoroughfare, and connects Reserve to other towns and cities, including Garyville to the west, LaPlace to the east, and Edgard to the south. Prominent local business and industry locations within the survey area include Reserve Telecommunications on W. 4th Street; the former location of the Godchaux Sugar Company immediately west of the survey area; the Godchaux-Reserve Plantation House on the east corner of W. 10th Street and Highway 44 and the Godchaux Guesthouse on the west corner; the Cargill Inc. grain company immediately west of the survey area; and DuPont located immediately east of the survey area.

The Reserve survey area substantially is residential. The survey area contains a collection of modest dwellings representing a variety of house types. Dominant building types represented in Reserve include bungalow, minimal traditional cottage, shotgun, and ranch. Most of the dwellings are one or one-and-one-half stories tall. These residential buildings generally are functional in design, modest in scale, and limited in ornamentation. Dwelling lots vary in size, and setbacks generally are uniform along the street; however, the setback varies from street to street. Additionally, resources sited on Highway 44 generally have significantly deeper setbacks than those located on other streets within the survey area. Most dwellings feature at least one outbuilding, such as a detached garage, carport, or shed.

A total of 748 resources were surveyed in Reserve, including 59 vacant lots and 689 build-

ings. These resources are identified in Appendix A. Dominant building types surveyed during the current investigation are discussed below.

Godchaux-Reserve Plantation House & Godchaux Guesthouse

The earliest built resources in the survey area originate from the Godchaux-Reserve plantation. The Godchaux-Reserve Plantation House is a National Register-listed French Creole plantation house reflecting ca. 1850 renovations. Substantial examples of this architectural style typically are fully raised on piers with the premier etage (principal story) raised above grade, feature large galleries, and contain a broad roofline (Louisiana Division of Historic Preservation, National Park Service n.d.). The Guesthouse was constructed by the Godchaux family ca. 1900 in the Colonial Revival Style. Architectural characteristic of this style include symmetrical forms and fenestration with classically-influenced details. Doric columns, large wraparound porches, prominent dormers, and Palladian windows are common characteristics of Colonial Revival dwellings of this magnitude.

Bungalow

Bungalow residences were constructed nationwide during the early twentieth century. Buildings included in this property type typically are one- to one-and-a-half stories in height with gabled roofs, asymmetrical forms, and front porches. The bungalow building type often is associated with the Craftsman style of architecture, and bungalows using this influence commonly display stylistic elements such as exposed rafter ends at roof eaves and gabled porches supported by short tapered square columns resting on large piers (Figure 4.1).

A total of 223 bungalows were surveyed in Reserve. These dwellings were erected between ca. 1910 and ca. 1950 and are characterized by one-story, wood-frame buildings that occupy rectangular or irregular-shaped footprints. Almost half of the surveyed bungalows terminate in front-gable roofs (110 of 223); however, 16 hip-roof bungalows also were identified in the survey area, including the dwelling located at 135 Terrace Street (Figure 4.2). Many of the front-gable



Figure 4.1 Bungalow-type dwelling located at 151 West 5th Street. Photograph by R. Christopher Goodwin & Associates, Inc., March 2018.



Figure 4.2 Bungalow-type dwelling located at 135 Terrance Street. Photograph by R. Christopher Goodwin & Associates, Inc., March 2018.

or hip-roof bungalow forms feature primary roofs with partial-width integrated porches extending from a smaller, secondary front-gable or hip-roof projection. The dwelling located at 140 W. 6th Street is an example of this bungalow type (Figure 4.3). A majority of the bungalow dwellings have replacement window units, while double-hung wooden units having various configurations also are common. Entrance doors generally are replacements or wooden partially-glazed units. Principal exterior materials include vinyl siding, clapboard, and asbestos, and roofs primarily are sheathed in metal or asphalt shingles. Of the surveyed bungalow forms, 112 rest on brick piers.

Ranch

Originating in the 1930s in southern California, the residential ranch building type was constructed during the 1940s in accordance with

Federal Housing Administration (FHA) financing guidelines and gained further popularity in the 1950s and 1960s (McAlester 2015:602). Character-defining features of this building type include a low-lying, linear plan, asymmetrical façade, and horizontal emphasis achieved through a low-pitched roof. In Louisiana, ranch buildings commonly are one-story in height with a poured concrete-slab foundation and brick exterior. Footprints often incorporate a garage (Office of Cultural Development Division of Historic Preservation n.d.:9-10).

A total of 134 ranch-type buildings were documented in the survey area. Construction dates for these buildings range from ca. 1950 to ca. 1990, and 62 of the buildings are 50 years of age or older. All documented ranches, which are modest in scale, are one-story in height with asymmetrical façades. They are characterized by



Figure 4.3 Bungalow-type dwelling located at 428 Central Avenue. Photograph by R. Christopher Goodwin & Associates, Inc., March 2018.

their concrete-slab foundations, brick exteriors, and hipped roofs sheathed in asphalt shingles (Figure 4.4). Other exterior cladding materials include asbestos shingles, and aluminum and vinyl siding. Most windows are aluminum awning or replacement units, and doors generally are partially-glazed or replacement. Most ranch dwellings in the survey area feature a porch or a carport that is integrated under the primary roofline, such as the residence found at 119 W. 2nd Street (Figure 4.5).

Minimal Traditional Cottage

The minimal traditional cottage emerged ca. 1935 during the Great Depression as a modest dwelling type that was eligible for FHA-backed mortgages. The type grew in popularity during World War II and widely was constructed during the post-war housing boom through ca. 1950; in

Louisiana, the type remained popular through the 1960s (McAlester 2015:588). The building type is characterized by its one-story height, modest scale, and minimal architectural detailing. The buildings commonly terminate in shallow cross- or side-gable roofs with little to no overhangs.

A total of 91 minimal traditional cottage-type dwellings were documented during the current investigation. These one-story, wood-frame buildings were constructed between ca. 1930 and ca. 1960 (Figure 4.6). Common characteristics of this dwelling type include asbestos or vinyl siding, concrete-block foundations, and asymmetrical façades. Though predominantly featuring gabled roofs, eight resources terminate in hipped roofs (Figure 4.7). Roofs primarily are sheathed in asphalt shingles, though raised-seam metal and asbestos are common as well. Windows primarily are replacements, though some contain aluminum



Figure 4.4 Ranch-type dwelling located at 193 West 2nd Street. Photograph by R. Christopher Goodwin & Associates, Inc., March 2018.



Figure 4.5 Ranch-type dwelling located at 119 West 2nd Street. Photograph by R. Christopher Goodwin & Associates, Inc., March 2018.



Figure 4.6 Minimal Traditional-type dwelling located at 229 Hotard Drive. Photograph by R. Christopher Goodwin & Associates, Inc., March 2018.



Figure 4.7 Minimal Traditional-type dwelling located at 224 West 2nd Street. Photograph by R. Christopher Goodwin & Associates, Inc., March 2018.

or wooden double-hung units. Many have partial-width or integrated porches, while some have stoops leading to the primary entries.

Shotgun and Double Shotgun

Shotgun-type dwellings were one of the most prevalent house types constructed in New Orleans and surrounding areas from the early nineteenth century into the early twentieth century. The single shotgun-type being one room wide and three to five rooms deep is the most common, and double shotguns are an equally popular subtype. The façade of a shotgun dwelling typically consists of an entrance and a window, while double shotguns generally featured two doors and two windows. Shotgun type dwellings are characterized by their linear plan extending perpendicular to the street (City of New Orleans Historic District Landmarks Commission n.d.:6).

A total of 16 single shotgun-type buildings and 34 double shotgun-type dwellings were documented in the survey area. Construction dates for these buildings range from ca. 1920 to ca. 1965. Of the 34 double shotguns, 16 have been converted into single-family residences (Figure 4.8). The roofs primarily terminate in front-gable roofs sheathed in metal or asphalt shingles, and most dwellings have full-width façade porches (Figure 4.9). A majority of the shotgun-type dwellings have replacement window units, while double-hung wooden units with six-over-six or two-over-two-light configurations also are common. Primary entrances generally are partially-glazed or replacement units, and exterior materials typically include clapboard or vinyl siding. Of the single shotgun and double shotgun dwellings documented, over half rest on brick-pier foundations (26 of 50).



Figure 4.8 Double shotgun-type dwelling located at 178 Beech Grove Drive. Photograph by R. Christopher Goodwin & Associates, Inc., March 2018.



Figure 4.9 Shotgun-type dwelling located at 117 East 30th Street. Photograph by R. Christopher Goodwin & Associates, Inc., March 2018.

Non-Residential Buildings

There are 40 non-residential buildings in the Reserve survey area. These built resources include: a post office, auto shops, grocery stores, community centers, small offices, and modest retail stores. Non-residential buildings predominantly are dispersed along Highway 44, or in small groups on W. 7th Street and Central Avenue near the intersection of Highway 44. Few non-residential buildings are located on small side streets in primarily residential groupings. The post office is a one-story, brick building with a flat roof and aluminum windows constructed ca. 1965. The St. John Theatre, originally Maurin's Theatre, is a two-story building clad in brick and vinyl siding terminating in a front-gable roof with an integrated porch (Figure 3.6). Cox's Meat Market, located at 1186 Highway 44 facing the river, is a symmetrical, parapet-gable-roof, concrete-

block building with a raised-seam metal awning and fixed single-light windows (Figure 4.10).

Late Twentieth-Century Domestic Architecture: New Construction

Late twentieth-century domestic architecture, documented as the building type of new construction, applies to 50 non-contributing buildings in the survey area. These buildings were constructed between ca. 1970 and ca. 2018 and range from one to two stories in height. The residential buildings generally consist of mobile homes or moderate-size dwellings with hipped or gabled roofs. Buildings of this type typically are clad in brick or vinyl siding with roofs sheathed in raised-seam metal. Examples include the dwellings located at 279 Hotard Drive and 1388 Highway 44, both of which were constructed ca. 2000, and mobile home located at 123 E. 31st



Figure 4.10 Non-Residential-type building, Cox's Meat Market, located at 1186 Highway 44. Photograph by R. Christopher Goodwin & Associates, Inc., March 2018.



Figure 4.11 New Construction-type dwelling located at 279 Hotard Drive. Photograph by R. Christopher Goodwin & Associates, Inc., March 2018.

Street (Figures 4.11 - 4.13, respectively). Commercial buildings constructed during this period generally have rectangular plans, shallow gable roofs, and are clad in raised-seam metal, such as the building located at 1288 Highway 44, constructed ca. 1990 (Figure 4.14).

Summary and Conclusions

A total of 748 resources were surveyed in Reserve, including 59 vacant lots and 689 buildings. Buildings range in date from ca. 1850 to ca. 2018, with the majority of buildings constructed between ca. 1930 to ca. 1950. This period leading

up to the Great Depression and into the immediate post-war years also coincides with the prosperity of local businesses such as the Godchaux Sugar Company, the Reserve Telephone Company, and the Hotard Bus Line Inc. (386 out of 689). During this time, returning veterans, federal policies that encouraged homeownership, and the booming local economy spurred construction. The majority of buildings in the survey area are residential and feature wood-frame construction resting on piers and terminating in gable roofs. Buildings generally are modest in scale with minimal ornamentation.



Figure 4.12 New Construction-type dwelling located at 1388 Highway 44. Photograph by R. Christopher Goodwin & Associates, Inc., March 2018.



Figure 4.13 New Construction-type mobile home located at 123 East 31st Street. Photograph by R. Christopher Goodwin & Associates, Inc., March 2018.



Figure 4.14 New Construction-type dwelling located at 1288 Highway 44. Photograph by R. Christopher Goodwin & Associates, Inc., March 2018.

ANALYSIS AND RECOMMENDATIONS

This chapter presents a summary of the results of archival and architectural data analysis. It also provides a discussion of periods of significance within the Reserve survey area, as well as a summary of contributing and non-contributing resources. The chapter concludes with recommendations.

Local Criteria for Evaluation

The St. John the Baptist Parish Historic District Commission includes historic districts and local historic landmarks of the Parish. To be locally designated, or considered eligible for local designation, in the Parish, a historic district or local landmark must include resources that are at least 50 years old or must be a resource that is at least 50 years old and also must meet at least one of the five following criteria:

- Representative of or exhibits characteristics of a particular architectural style, type, period or way of life important to the Parish;
- Exemplifies the cultural, economic, religious, educational, political, social or economic growth and/or history of the Parish, state or nation;
- Serves as an example of a building or structure representative of its era for which there are few remaining examples of part architectural styles or types;
- Associated with a business or use that was once common but is now rare;
- Serves as an established and familiar visual feature of a neighborhood or community that contributes to the cultural, architectural or historic development of the Parish, state or nation.

Analysis

The boundaries of the current survey area coincide with those of the local Reserve Historic District, which was designated in July 2017 (St. John the Baptist Parish Council Ordinance 17-27 Section 114-29[a][1]). The survey area is bound on the south by Louisiana State Highway 44, or River Road; W. 10th Street on the west and the southeastern corner parcel; E. 31st Street on the east; and, through sections of the area north and south of the railroad on the north.

The earliest extant building documented in the survey area dates from ca. 1850, which marks the date of the last stage of construction of the plantation house purchased by Antoine Boudousquie in 1833. The plantation and associated house would become the Reserve Plantation, the origin of the community namesake, and in the late nineteenth century, it became the location of the Godchaux Sugar Company that would fuel the economy of Reserve throughout the following century. The mill complex, no longer extant, guesthouse, and plantation house were located in the area surrounding W. 10th Street and Highway 44. Other sugar plantations also were established in the area during this time. The sugar industry prospered during the mid to late nineteenth century and helped spur initial development in what would become Reserve. Early construction occurred along River Road, now Highway 44. The establishment of St. Peter Catholic Church in the late nineteenth century at the current location on Hwy 44 at W. 7th Street established the intersection as a small commercial center.

At the turn of the twentieth century, the Godchaux Sugar Company became one of the largest producers of sugar from cane in the United States (Godchaux Reserve House 2018). Residences built from 1900 to 1925 include cottage, bungalow, and shotgun types. The substantial Colonial Revival-style Godchaux Guesthouse also was

built during this period. The dwellings built during this period typically are located on streets in the western portion of the survey area, which would have been near the Godchaux-Reserve Plantation, the church, and the railroad, such as W. 9th, W. 8th, and W. 7th streets, Lapeyrolerie Drive, and along River Road. The success of the sugar industries, creation of the Reserve Telephone Company, and increased access to New Orleans instigated a boom in construction in Reserve from 1930 to 1945. A total of 359 buildings were constructed during this time within the survey area. Bungalows and shotgun houses primarily were constructed during the earlier part of this period. Commercial buildings were added to the area, and during the Depression and approaching World War II, Minimal Traditional-type dwellings became more prevalent in the community for newly built homes. Ranch and Minimal Traditional cottages were common dwelling types constructed at the end of this period. Also during this period, development began to spread further north onto streets including Central Avenue, Terrace Street, and W. 1st and 2nd streets. Development also expanded north of the railroad onto various side streets such as Northwest 1st and 2nd streets and Beech Grove Drive, as well as downriver onto the side streets stretching from River Road.

The slight increase in new construction of 74 new buildings (constructed ca. 1945-ca. 1955) was part of the national construction boom that occurred after World War II. Residential construction further was stimulated by passage of legislation such as the Servicemen's Readjustment Act of 1944 (also known as the G.I. Bill) that provided veterans with low-interest loans from the federal government. Construction during this time primarily was concentrated on W. 2nd Street and newly-platted roads west of Central Avenue, such as Parker Lane. An influx of new industries, such as DuPont, which abuts the east boundary of the survey area, in Reserve following the war into the 1960s brought further residential development to the community. Industries were encouraged to develop the area due to population increases within the parish, increasing from approximately 4,000 residents in 1950 to 5,297 in 1960 (*Times Picayune* 1950; Kirkpatrick 1961).

Forty-six new dwellings were constructed within the survey area at this time, developing additional gridded streets north from River Road. Later development primarily can be distinguished by the styles and types of residential buildings that were constructed in congruence with the FHA-mortgage guidelines, as types such as Minimal Traditional cottages and ranches typically appear post-1925. The postwar period becomes more evident by the influx of ranch forms and decline of shotgun and bungalow forms.

Period of Significance

The developmental history of the survey area is defined by a period of significance: 1850-1968. The period of significance begins with the final stage of construction of the Godchaux-Reserve Plantation House, giving its current appearance. The Reserve Plantation provided the impetus for the growth and development of the sugar industry and the name of the town. The period captures the success of the sugar mill and local businesses located in and immediately surrounding the survey area beginning in the turn of the twentieth century into World War II, and the subsequent growth during the 1950s and 1960s. Although development of the survey area slightly slowed during the 1950s, industrial complexes provided additional employment and helped spur new construction along River Road in the 1960s strengthened the local economy. During the post-war period, war veterans utilized the GI Bill to construct new dwellings within the survey area. This subsequent shift in the local economy of Reserve from an agricultural dominance to industrial processing and manufacturing is encompassed by the 1968 terminal date. The 1968 terminal date also coincides with the 50-year cutoff date utilized by the National Register and set forth in the St. John the Baptist Parish Commission Ordinance 17-27: *Criteria for designation of historic districts and local landmarks* (Section 114-28[d]).

A total of 494 buildings date to the 1850-1968 period of significance. Building types predominantly include: 223 bungalows constructed between ca. 1910 and ca. 1950; 63 ranches constructed between ca. 1950 to ca. 1965; 91 Minimal Traditional cottages constructed between ca. 1930 and ca. 1960; 50 single and double shotguns

constructed between ca. 1920 to ca. 1965; and, 28 non-residential buildings constructed between ca. 1930 and ca. 1965. Earlier buildings typically are located close to the river and near the former Godchaux Sugar Company, while later construction expanded north of the river.

Contributing versus Non-Contributing Resources

Approximately 62 per cent of the resources recorded during survey retain sufficient integrity of location, design, setting, materials, workmanship, feeling, and association to convey their period of significance and, therefore, are considered contributing elements to the local Reserve Historic District (461 out of 748). Generally, these buildings retain their original construction materials and design to reflect their period of construction. If replacement materials are present, the buildings generally retain their original mass, scale, and form to convey their original construction periods.

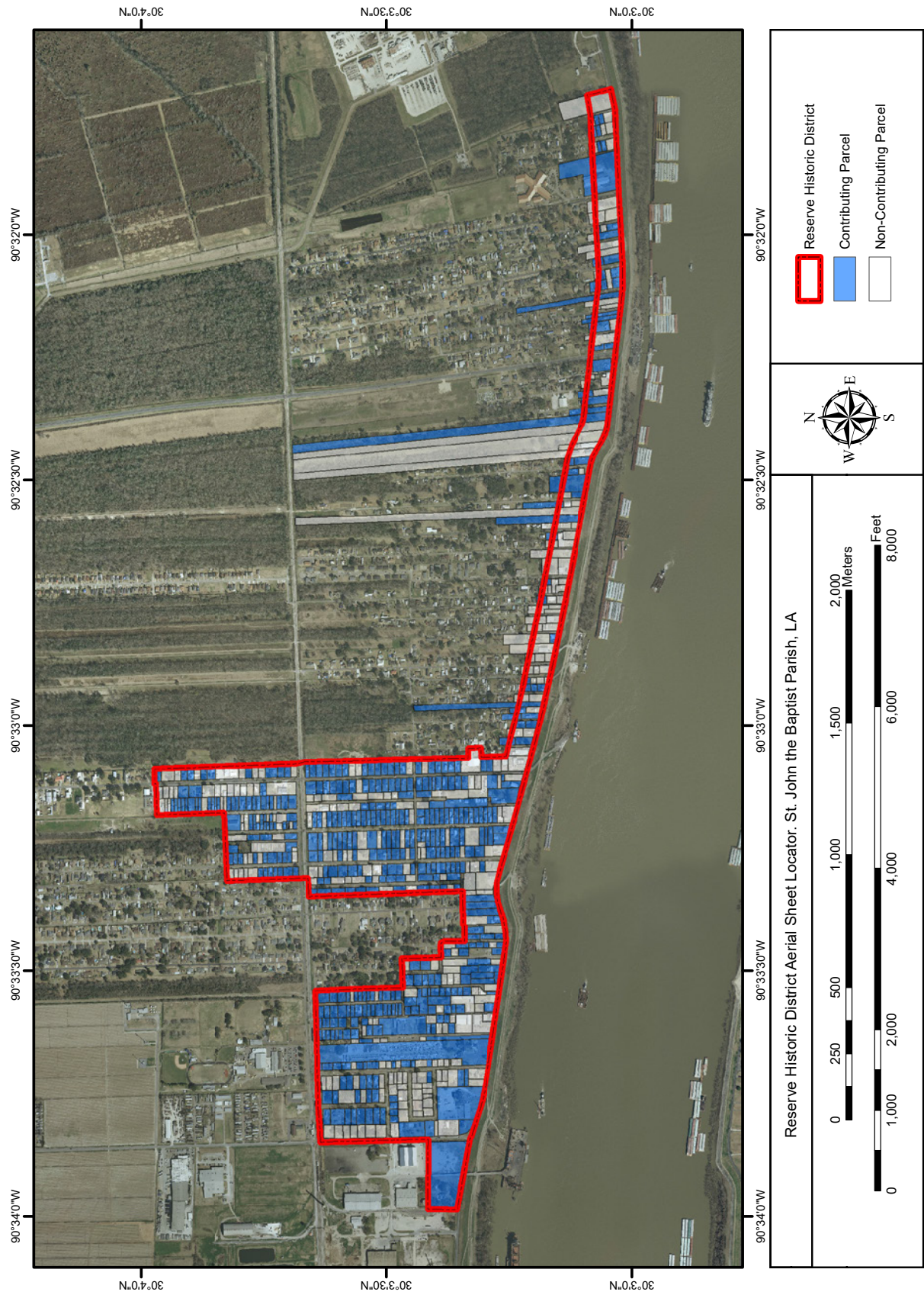
Non-contributing elements either were constructed after the period of significance (1850-1968) or were constructed within the period of significance and have lost integrity. Non-contributing elements comprise approximately 38 per cent of the total building stock (287 of 748). Contributing and non-contributing resources are presented in Appendix A.

Summary and Recommendations

A total of 748 resources were documented during survey of Reserve, including 689 buildings and 59 vacant lots. Of the 748 recorded resources, 461 are contributing elements to the local Reserve Historic District and 287 are non-contributing elements. The non-contributing resources predominantly are scattered throughout the survey area; however, clusters appear on streets that were platted or extended post-1950,

such as Marmillian Loop, Central Avenue, and the north-south running streets platted east of Central Avenue. Highway 44 contains a concentration of non-contributing resources as well. Of the 287 non-contributing elements, 195 were constructed after the period of significance (1850-1968), and, therefore, are non-contributing elements to the local Reserve Historic District. Predominant building types for these 195 resources include new construction, non-residential buildings, mobile homes, and later ranches. All 59 vacant lots, or sites, are considered non-contributing elements due to lack of integrity.

The survey area, consistent with the local historic district boundary, east of Central Avenue is limited to the north side of Louisiana State Highway 44 and 300 feet north of the road, as delineated in the local Reserve Historic District (St. John the Baptist Parish Council Ordinance 17-27 Section 114-29[a][1]). A preliminary windshield survey suggests that the area north of the 300-ft cutoff may contain resources similar to those found within the survey area and within the boundaries of the historic district boundary. The current historic district boundaries also exclude streets in the western portion: W. 4th Street north of Hart Drive, Toni Drive, and W. 3rd Street. Historic aerials illustrate that parts of these streets were developed with built resources by the early 1960s. Additional survey and investigation may result in additional historic districts or adjustment to the existing boundaries. The additional survey areas can be segmented depending on the nature and distance of development on each street east of Central Avenue and ending after E. 31st Street. As many of the 59 vacant lots (38 of 59) are located on or near Highway 44, it also is recommended that the Commission consider excluding these resources from the historic district boundary while a more precise boundary is being delineating.



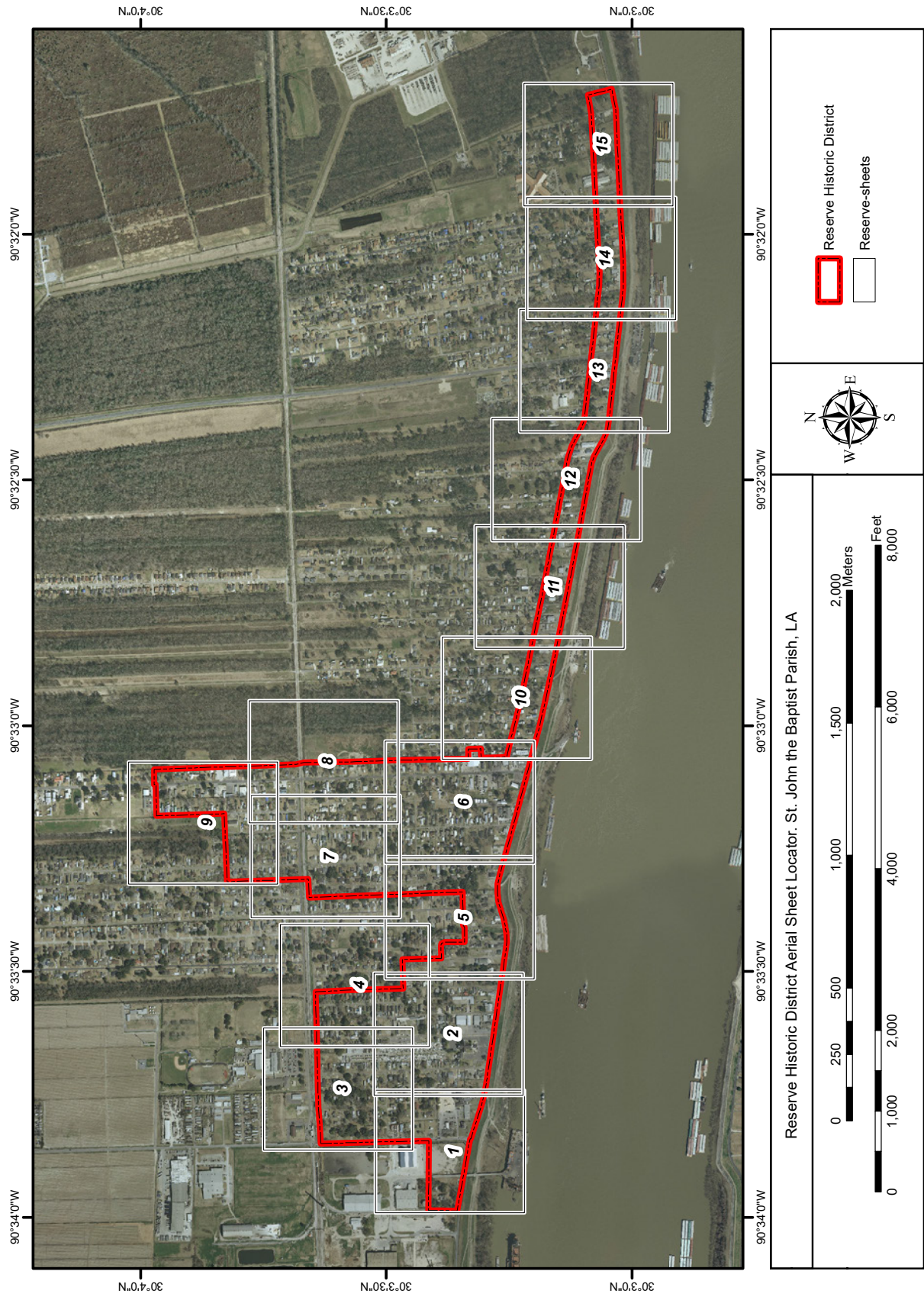


Figure 5.1 Sheet Locator Map.



Figure 5.1 Contributing/Non-Contributing resources.
Sheet 1



Figure 5.1 Contributing/Non-Contributing resources.
Sheet 2



Figure 5.1 Contributing/Non-Contributing resources.
Sheet 3

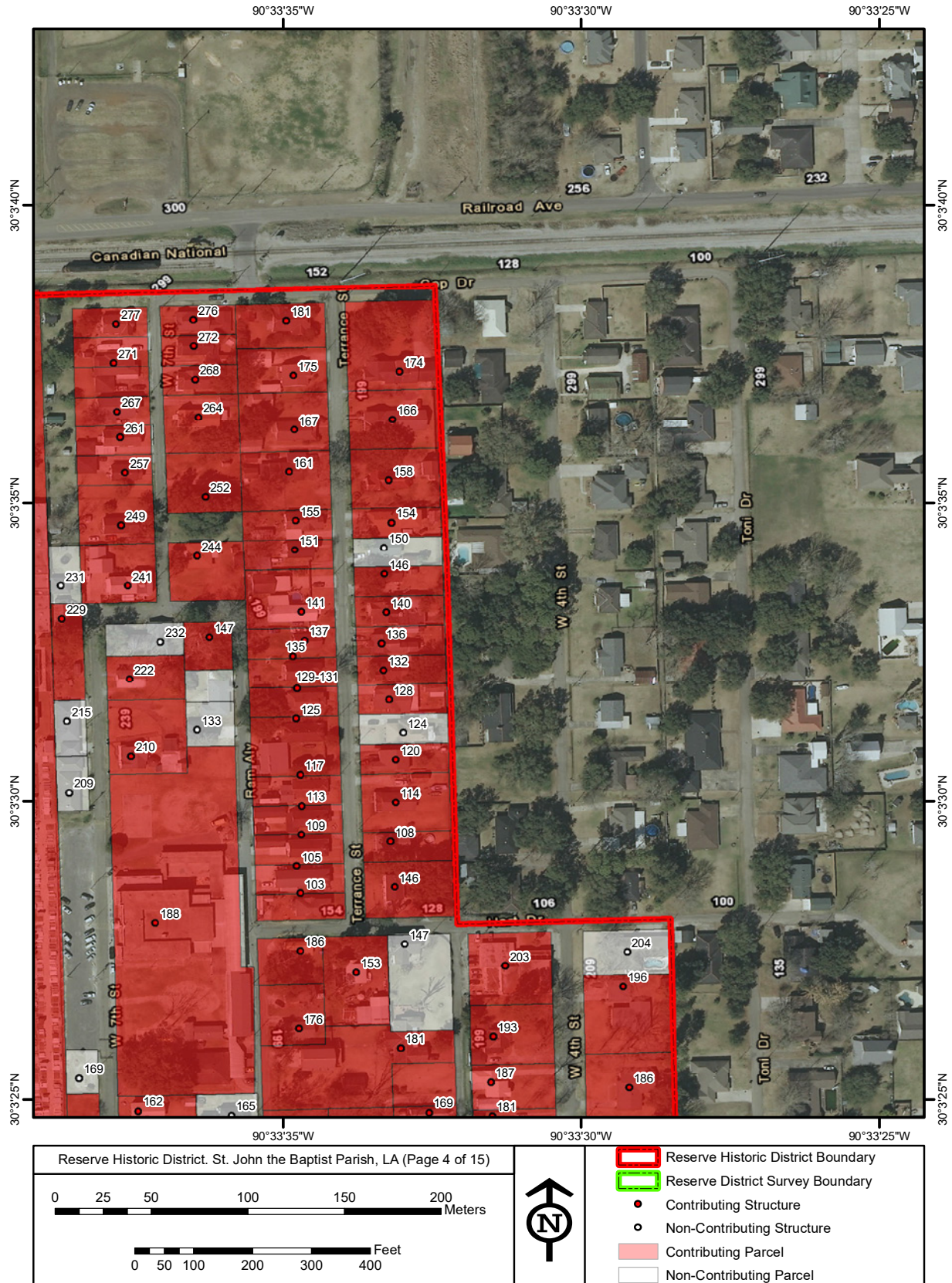


Figure 5.1 Contributing/Non-Contributing resources.
Sheet 4



Figure 5.1 Contributing/Non-Contributing resources.
Sheet 5

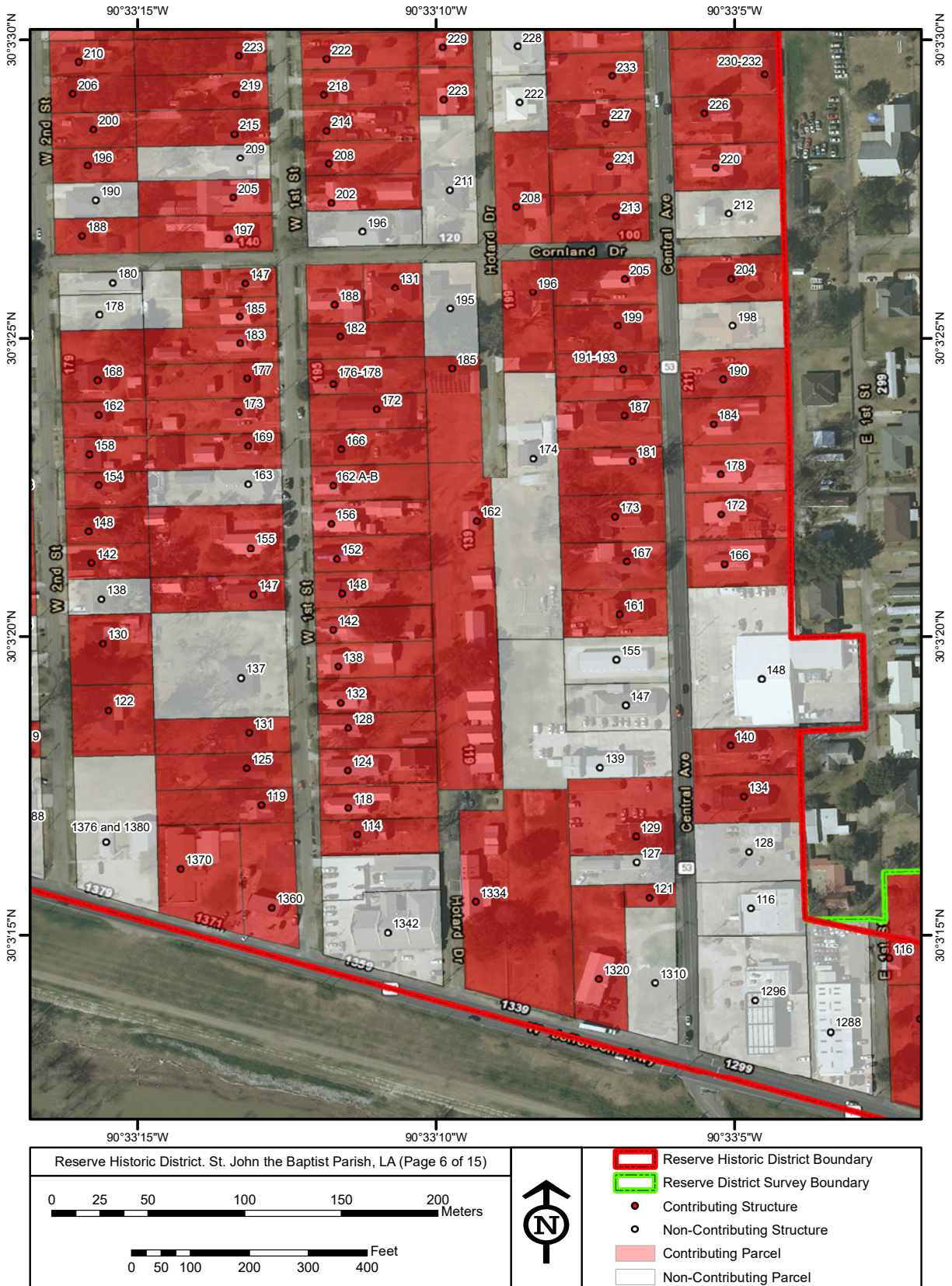
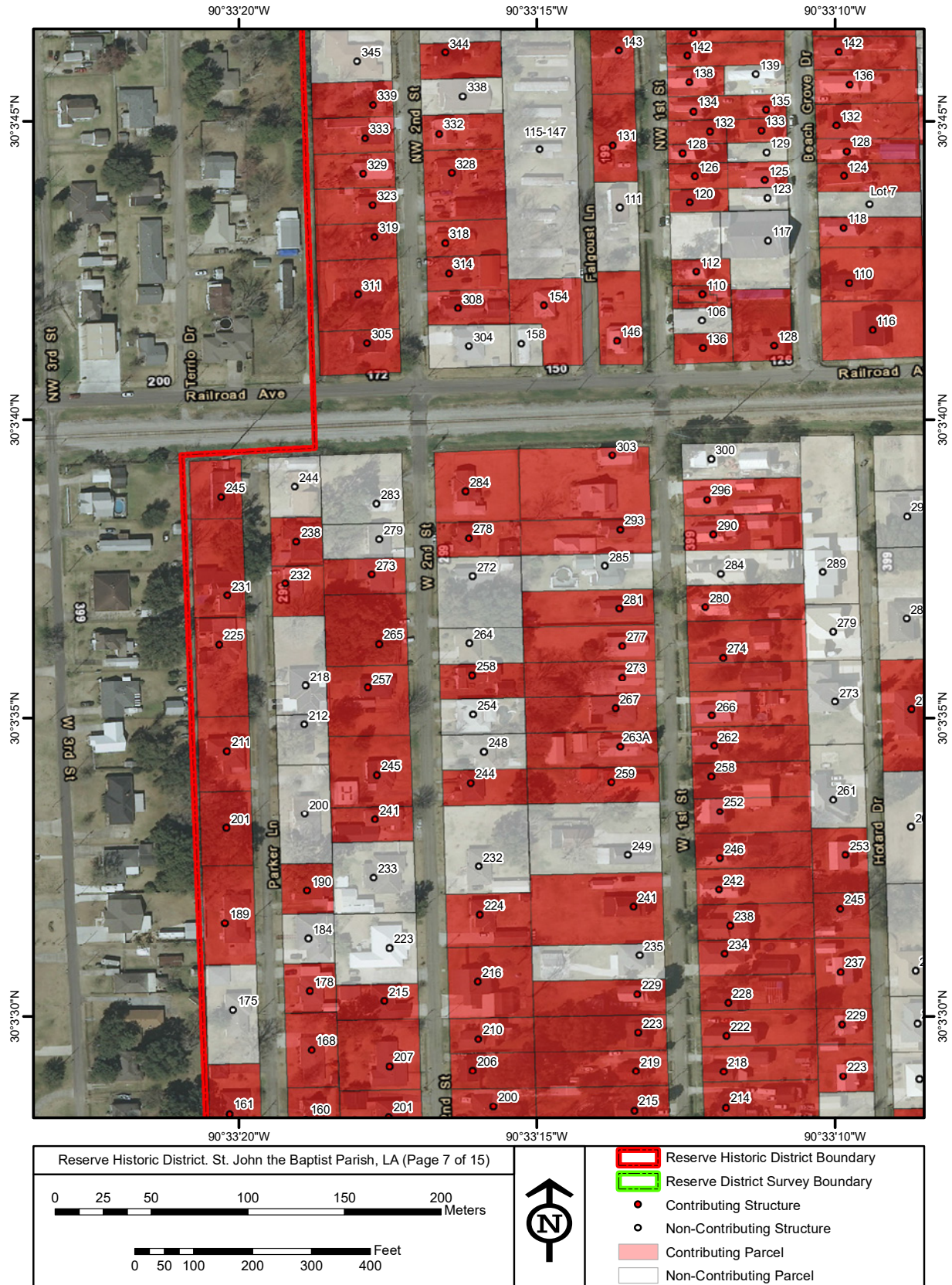


Figure 5.1 Contributing/Non-Contributing resources.
Sheet 6



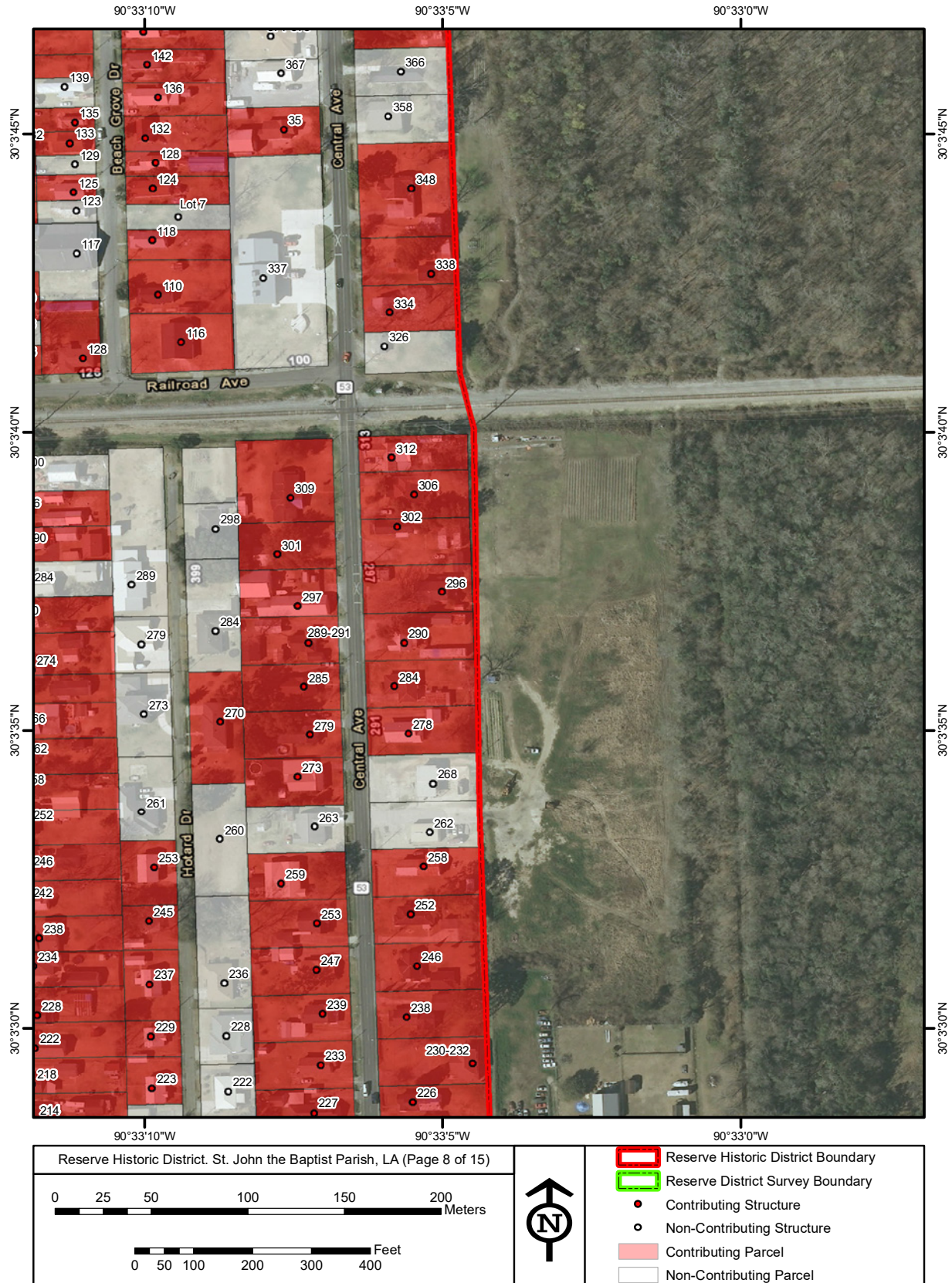
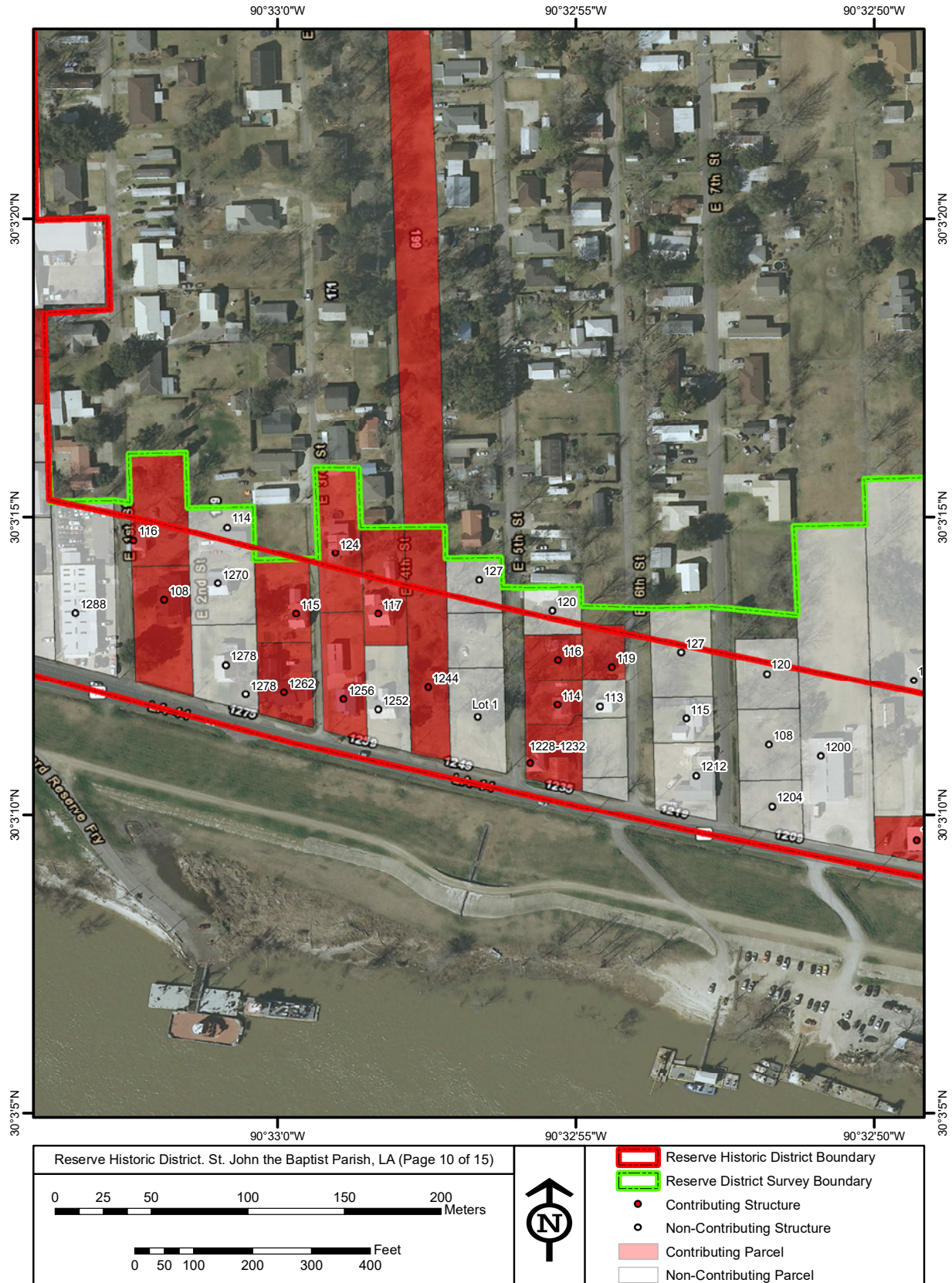


Figure 5.1 Contributing/Non-Contributing resources.
Sheet 8



Figure 5.1 Contributing/Non-Contributing resources.
Sheet 9



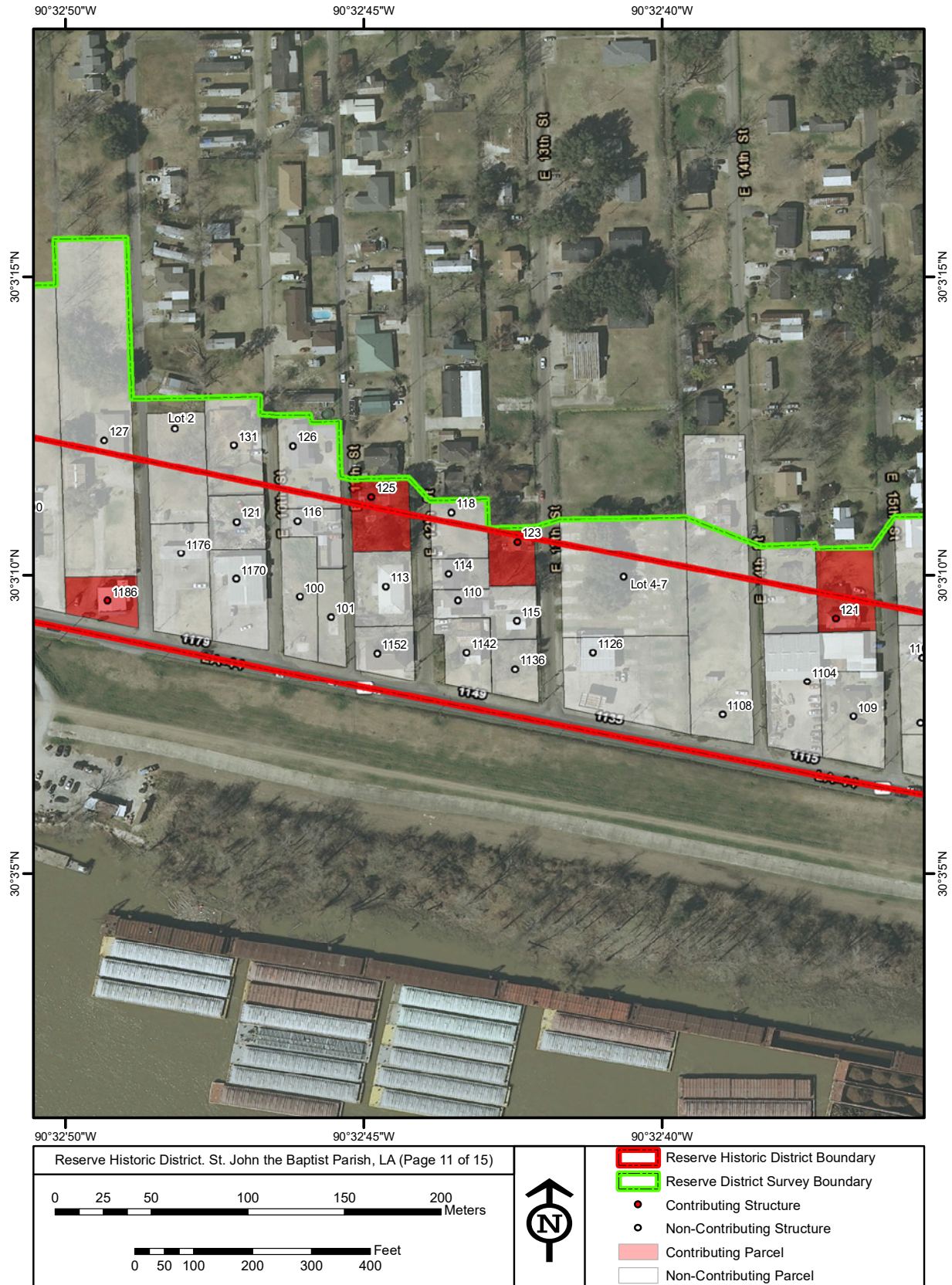


Figure 5.1 Contributing/Non-Contributing resources.
Sheet 11



Figure 5.1 Contributing/Non-Contributing resources.
Sheet 12

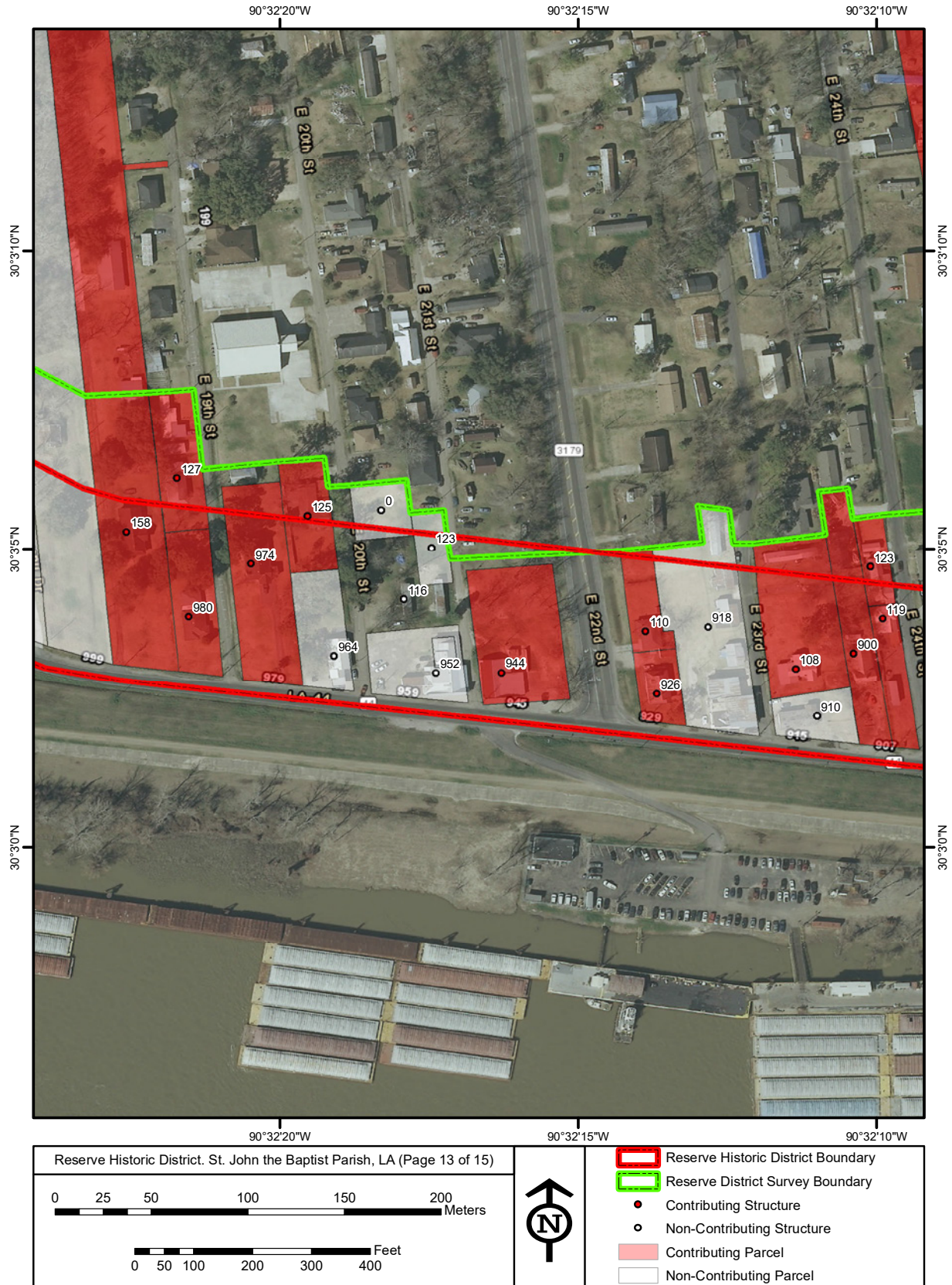


Figure 5.1 Contributing/Non-Contributing resources.
Sheet 13



Figure 5.1 Contributing/Non-Contributing resources.
Sheet 14



Figure 5.1 Contributing/Non-Contributing resources.
Sheet 15

REFERENCES CITED

Bank of St. John

- 1974 *St. John the Baptist Parish: On the Corridor of History*. Baton Rouge: Norman A. Ferachi & Associates, Inc.

City of New Orleans Historic District Landmarks Commission

- n.d. Building Types and Architectural Styles. Electronic document, https://www.nola.gov/hdlc/documents/03_typesstyles-2015-04-24/, accessed May 2018.

Cranow, Gus

- 1979 "Parish Profile: St. John the Baptist Parish." *Acadiana Profile* 8(1): 39-48. On file at the central branch of the St. John the Baptist Parish Library, LaPlace.

Department of Planning and Urban Studies, University of New Orleans

- 2017 Protecting the Future by Preserving the Past: A Report to the St. John the Baptist Parish Historic Preservation Study Community. Electronic document, http://scholarworks.uno.edu/plus_rpts/31, accessed March-May 2018.

Godchaux Reserve House

- 2018 The Godchaux-Reserve House. Electronic document, <http://www.godchauxhouse.com/>, accessed May 2018.

Gray, Leonard

- 1999 Reserve Town History. *L'Observateur* (St. John the Baptist Parish, Louisiana) 19 June.

Keller, Gerald J., Lisa Keller-Watson, and Darroch Watson

- 2008 *Precious Gems from Faded Memories*. Dexter, MI: Thomson-Shore Publishing.

Kirkpatrick, Claude

- 1961 *List of Cities, Towns, and Villages Showing Population and Post Offices*. State of Louisiana Department of Public Works. On file at the central branch of the St. John the Baptist Parish Library.

L'Observateur (St. John the Baptist Parish, Louisiana)

- 2010 "Down Through the Years." Supplement to *L'Observateur*. Electronic document, <https://issuu.com/wickcommunications/docs/dtty/2>, accessed May 2018.

Leslie, P.

- 1984 Godchaux Guest House. Historic Standing Structure Survey Form, Division of Historic Preservation, Baton Rouge, Louisiana. On file in the vertical stacks at the St. John the Baptist Parish Library.

Louisiana Division of Historic Preservation (LDHP)

- 2018 Louisiana Historic Resource Inventory Guidelines. Electronic document, <https://www.crt.state.la.us/Assets/OCD/hp/standing-structures-survey/SurveyGuidelines.pdf>, accessed May 18, 2018.

Lucia, Joseph A.

- 1965a "Jury Opposes Grain Elevator." *Times Picayune* (New Orleans, Louisiana). 4 April. Clipping on file in the vertical stacks at the St. John the Baptist Parish Library.
- 1965b "Lack of Pier May Close: Godchaux President Cites Shipping Operation Losses." *Times Picayune* (New Orleans, Louisiana). 12 May. Clipping on file in the vertical stacks at the St. John the Baptist Parish Library.
- 1965c "Initial Wharf Plans Get OK." *Times Picayune* (New Orleans, Louisiana). 21 July. Clipping on file in the vertical stacks at the St. John the Baptist Parish Library.

McAlester, Virginia Savage

- 2015 *A Field Guide to American Houses*. New York: Alfred A. Knopf.

National Register Staff, Louisiana Division of Historic Preservation (NRS)

- 1993 "Reserve Plantation House." National Register of Historic Places Inventory/Nomination Form. Washington, D.C.: National Park Service.

Louisiana Division of Historic Preservation, National Park Service

- n.d. French Creole Architecture. Electronic document, <https://www.nps.gov/nr/travel/louisiana/architecture.htm>, accessed May 2018.

Nationwide Environmental Title Research, LLC (NETR)

- Var. Historic aerial photography. Electronic document, <https://www.historicaerials.com/viewer>, accessed March-May 2018.

Office of Cultural Development Division of Historic Preservation (Louisiana)

- n.d. Louisiana Architecture: 1945-1965, Post-War Subdivision and the Ranch House. Electronic document, https://www.crt.state.la.us/Assets/OCD/hp/nationalregister/historic_contexts/ranchhousefinalrevised.pdf, accessed May 11, 2018.

Persac, Marie Adrien

- 1858 *Norman's Chart of the Lower Mississippi River*. Published by Benjamin Moore Norman. Electronic document, <https://www.loc.gov/item/78692178/>, accessed 27 April, 2018.

Port of South Louisiana

- n.d. Guesthouse. Electronic document, <http://portsl.com/guesthouse/>, accessed May 2018.

St. John the Baptist Parish Council

- 2017 Ordinance 17-27. Approved July 13, 2017. Electronic document, <http://sjbparish.com/pdfs/Ordinance.17-27.pdf>, accessed May 14, 2018.

St. John the Baptist Parish Historic Preservation Study Committee

- 2017 *Report to the St. John the Baptist Parish Planning and Zoning Commission for a Proposed Local Historic Preservation Ordinance and Program*. 19 May.

Sternberg, Mary Ann

- 1996 *Along the River Road: Past and Present on Louisiana's Historic Byway*. Baton Rouge: Louisiana State University Press.

Times Picayune (New Orleans, Louisiana)

- 1950 "What's in a Name? Reserve, LA." 24 December. Clipping on file in the vertical stacks at the St. John the Baptist Parish Library.

Tri-Parish Telephone Directory

- 2001 "Cover Story: St. John Theatre 115 West Fourth St and River Rd, Reserve LA (Formerly Maurin's Theatre): How It All Began." Clipping on file in the vertical stacks at the St. John the Baptist Parish Library.

U.S. Bureau of the Census

- 1940 U.S. Federal Census Collection, 1940: St. John the Baptist Parish, Louisiana. Online records extracted from *Ancestry.com*, subscription database.

U.S. Geological Survey

- 1949 *Garyville, Louisiana*. 7.5' series topographic quadrangle.
- 1962 *Reserve, Louisiana*. 7.5' series topographic quadrangle. 1963 ed.; photorevised 1981 and 1994.

APPENDIX A

DOCUMENTED RESOURCES IN THE RESERVE SURVEY AREA

Street Number	Street Name	Latitude	Longitude	Estimated Construction Date	Resource Type	Resource Count
110	BEECH GROVE DRIVE	30.06174807	-90.55271502	1930	Building	Contributing
117	BEECH GROVE DRIVE	30.06194283	-90.55309329	1975	Building	Non-Contributing
118	BEECH GROVE DRIVE	30.0620037	-90.55274188	1935	Building	Contributing
123	BEECH GROVE DRIVE	30.0621416	-90.55309497	1935	Building	Non-Contributing
124	BEECH GROVE DRIVE	30.06224468	-90.55274044	1935	Building	Contributing
125	BEECH GROVE DRIVE	30.06222546	-90.55310804	1930	Building	Contributing
128	BEECH GROVE DRIVE	30.06236129	-90.5527274	1940	Building	Contributing
129	BEECH GROVE DRIVE	30.06235575	-90.55310134	N/A	Site	Non-Contributing
132	BEECH GROVE DRIVE	30.06248185	-90.55277457	1940	Building	Contributing
135	BEECH GROVE DRIVE	30.06255365	-90.55310201	1930	Building	Contributing
136	BEECH GROVE DRIVE	30.06267007	-90.55271487	1940	Building	Contributing
139	BEECH GROVE DRIVE	30.06271847	-90.55314995	1980	Building	Non-Contributing
142	BEECH GROVE DRIVE	30.06282139	-90.55276545	1940	Building	Contributing
146	BEECH GROVE DRIVE	30.06297217	-90.55278277	1940	Building	Contributing
150	BEECH GROVE DRIVE	30.06311199	-90.55278997	1940	Building	Contributing
157	BEECH GROVE DRIVE	30.06322594	-90.55316874	1980	Building	Non-Contributing
158	BEECH GROVE DRIVE	30.06338035	-90.55278551	1935	Building	Contributing
162	BEECH GROVE DRIVE	30.0635245	-90.55278604	1935	Building	Contributing
166	BEECH GROVE DRIVE	30.0636637	-90.55278604	1940	Building	Contributing
170	BEECH GROVE DRIVE	30.06379182	-90.55259675	1980	Building	Non-Contributing
172	BEECH GROVE DRIVE	30.06389047	-90.55275433	1935	Building	Non-Contributing
174	BEECH GROVE DRIVE	30.06401757	-90.5527835	1940	Building	Contributing
176	BEECH GROVE DRIVE	30.06413073	-90.55280764	1940	Building	Contributing
178	BEECH GROVE DRIVE	30.06424289	-90.55284	1930	Building	Contributing
182	BEECH GROVE DRIVE	30.06338035	-90.55285798	1950	Building	Contributing
190	BEECH GROVE DRIVE	30.06451422	-90.55269518	N/A	Site	Non-Contributing
196	BEECH GROVE DRIVE	30.06469511	-90.55282272	1940	Building	Contributing
198	BEECH GROVE DRIVE	30.06477549	-90.55282172	1940	Building	Contributing
204	BEECH GROVE DRIVE	30.06500965	-90.55278283	1930	Building	Contributing
208	BEECH GROVE DRIVE	30.06512311	-90.5528358	1950	Building	Contributing
212	BEECH GROVE DRIVE	30.06524556	-90.55285357	1935	Building	Contributing
214	BEECH GROVE DRIVE	30.06536163	-90.55285424	1960	Building	Contributing
218	BEECH GROVE DRIVE	30.06547189	-90.55284921	1940	Building	Contributing
222	BEECH GROVE DRIVE	30.06559579	-90.55282339	1950	Building	Contributing

Street Number	Street Name	Latitude	Longitude	Estimated Construction Date	Resource Type	Resource Count
226	BEECH GROVE DRIVE	30.06572056	-90.55278316	1985	Building	Non-Contributing
228	BEECH GROVE DRIVE	30.06579455	-90.55286061	N/A	Site	Non-Contributing
232	BEECH GROVE DRIVE	30.06593209	-90.55276439	2000	Building	Non-Contributing
LOT 7	BEECH GROVE DRIVE	30.06211227	-90.55262234	N/A	Site	Non-Contributing
133	BEECH GROVE STREET	30.0624576	-90.55312548	1940	Building	Contributing
35	CENTRAL AVENUE	30.0625197	-90.55213071	1940	Building	Contributing
116	CENTRAL AVENUE	30.05428861	-90.55131285	1990	Building	Non-Contributing
121	CENTRAL AVENUE	30.05433886	-90.55178631	1935	Building	Contributing
127	CENTRAL AVENUE	30.05450156	-90.55184472	1980	Building	Non-Contributing
128	CENTRAL AVENUE	30.05455149	-90.55132185	1965	Building	Non-Contributing
129	CENTRAL AVENUE	30.05462257	-90.55184774	1965	Building	Contributing
134	CENTRAL AVENUE	30.05480975	-90.55134617	1945	Building	Contributing
139	CENTRAL AVENUE	30.05494382	-90.55201571	1980	Building	Non-Contributing
140	CENTRAL AVENUE	30.05504642	-90.55140904	1945	Building	Contributing
147	CENTRAL AVENUE	30.05523373	-90.55189636	1985	Building	Non-Contributing
148	CENTRAL AVENUE	30.05535648	-90.55126369	1970	Building	Non-Contributing
155	CENTRAL AVENUE	30.05544569	-90.55194019	2000	Building	Non-Contributing
161	CENTRAL AVENUE	30.05565623	-90.55192328	1945	Building	Contributing
166	CENTRAL AVENUE	30.05589047	-90.55143569	1935	Building	Contributing
167	CENTRAL AVENUE	30.05590234	-90.55189066	1930	Building	Contributing
172	CENTRAL AVENUE	30.05612288	-90.55145245	1935	Building	Contributing
173	CENTRAL AVENUE	30.0561107	-90.55194564	1935	Building	Contributing
178	CENTRAL AVENUE	30.0563082	-90.55145518	1935	Building	Contributing
181	CENTRAL AVENUE	30.05637129	-90.55186585	1945	Building	Contributing
184	CENTRAL AVENUE	30.05654163	-90.55148832	1930	Building	Contributing
187	CENTRAL AVENUE	30.05658342	-90.55190306	1935	Building	Contributing
190	CENTRAL AVENUE	30.05674953	-90.55144239	1935	Building	Contributing
198	CENTRAL AVENUE	30.05699898	-90.55139898	1935	Building	Non-Contributing
199	CENTRAL AVENUE	30.05699955	-90.5519329	1965	Building	Contributing
204	CENTRAL AVENUE	30.05721887	-90.55140632	1935	Building	Contributing
205	CENTRAL AVENUE	30.05721836	-90.55189904	1930	Building	Contributing
212	CENTRAL AVENUE	30.05752122	-90.55141641	N/A	Site	Non-Contributing
213	CENTRAL AVENUE	30.05750797	-90.55194061	1930	Building	Contributing
220	CENTRAL AVENUE	30.05773228	-90.55147793	1935	Building	Contributing

Street Number	Street Name	Latitude	Longitude	Estimated Construction Date	Resource Type	Resource Count
221	CENTRAL AVENUE	30.05773822	-90.55197015	1935	Building	Contributing
226	CENTRAL AVENUE	30.05798854	-90.55153008	1935	Building	Contributing
227	CENTRAL AVENUE	30.05794006	-90.55198923	1940	Building	Contributing
233	CENTRAL AVENUE	30.05816147	-90.55195939	1935	Building	Contributing
238	CENTRAL AVENUE	30.05838551	-90.55155875	1935	Building	Contributing
239	CENTRAL AVENUE	30.05839913	-90.55195034	1940	Building	Contributing
246	CENTRAL AVENUE	30.05862229	-90.55150978	1940	Building	Contributing
247	CENTRAL AVENUE	30.05860381	-90.55197907	1940	Building	Contributing
252	CENTRAL AVENUE	30.05886357	-90.55154006	1940	Building	Contributing
253	CENTRAL AVENUE	30.05882094	-90.55197676	1940	Building	Contributing
258	CENTRAL AVENUE	30.05908455	-90.55147961	1935	Building	Contributing
259	CENTRAL AVENUE	30.05900572	-90.55214254	1955	Building	Contributing
262	CENTRAL AVENUE	30.05924386	-90.55145111	1975	Building	Non-Contributing
263	CENTRAL AVENUE	30.05926911	-90.55198688	1990	Building	Non-Contributing
268	CENTRAL AVENUE	30.05947224	-90.55143535	1970	Building	Non-Contributing
273	CENTRAL AVENUE	30.05950402	-90.55206582	1940	Building	Contributing
278	CENTRAL AVENUE	30.05970467	-90.55155035	1935	Building	Contributing
279	CENTRAL AVENUE	30.05969887	-90.55200934	1940	Building	Contributing
284	CENTRAL AVENUE	30.05992326	-90.55161508	1950	Building	Contributing
285	CENTRAL AVENUE	30.0599206	-90.55203681	1940	Building	Contributing
290	CENTRAL AVENUE	30.06012839	-90.55157036	1930	Building	Contributing
296	CENTRAL AVENUE	30.06036455	-90.55139478	1940	Building	Contributing
297	CENTRAL AVENUE	30.06029784	-90.55206526	1940	Building	Contributing
301	CENTRAL AVENUE	30.06053779	-90.55216122	1945	Building	Contributing
302	CENTRAL AVENUE	30.06067069	-90.55160366	1940	Building	Contributing
306	CENTRAL AVENUE	30.06081899	-90.55152346	1950	Building	Contributing
309	CENTRAL AVENUE	30.06080446	-90.55209853	1965	Building	Contributing
312	CENTRAL AVENUE	30.06098971	-90.55162837	1935	Building	Contributing
326	CENTRAL AVENUE	30.06150931	-90.55166099	1970	Building	Non-Contributing
334	CENTRAL AVENUE	30.06166542	-90.55163719	1935	Building	Contributing
337	CENTRAL AVENUE	30.06182908	-90.55222627	1990	Building	Non-Contributing
338	CENTRAL AVENUE	30.06184794	-90.55144407	1940	Building	Contributing
348	CENTRAL AVENUE	30.0622449	-90.55153627	1935	Building	Contributing
358	CENTRAL AVENUE	30.06258238	-90.55164356	1975	Building	Non-Contributing

Street Number	Street Name	Latitude	Longitude	Estimated Construction Date	Resource Type	Resource Count
366	CENTRAL AVENUE	30.06278909	-90.55158538	2008	Building	Non-Contributing
367	CENTRAL AVENUE	30.06278144	-90.55214278	1975	Building	Non-Contributing
372	CENTRAL AVENUE	30.06300603	-90.55161841	1935	Building	Contributing
377	CENTRAL AVENUE	30.0631738	-90.55219858	1980	Building	Non-Contributing
380	CENTRAL AVENUE	30.06322885	-90.55160071	2010	Building	Non-Contributing
383	CENTRAL AVENUE	30.06340008	-90.55216189	1990	Building	Non-Contributing
388	CENTRAL AVENUE	30.06360698	-90.5515879	1975	Building	Non-Contributing
405	CENTRAL AVENUE	30.064111	-90.55219408	1980	Building	Non-Contributing
406	CENTRAL AVENUE	30.06420096	-90.55168413	1940	Building	Contributing
413	CENTRAL AVENUE	30.06438957	-90.55220447	1970	Building	Non-Contributing
418	CENTRAL AVENUE	30.06451985	-90.55172067	1940	Building	Contributing
423	CENTRAL AVENUE	30.06470498	-90.55219844	1965	Building	Contributing
424	CENTRAL AVENUE	30.06478623	-90.55167843	1985	Building	Non-Contributing
428	CENTRAL AVENUE	30.06493653	-90.55171531	1940	Building	Contributing
435	CENTRAL AVENUE	30.06516344	-90.55225477	1950	Building	Contributing
436	CENTRAL AVENUE	30.06520978	-90.55177274	1940	Building	Contributing
442	CENTRAL AVENUE	30.06538455	-90.55168178	1975	Building	Non-Contributing
450	CENTRAL AVENUE	30.0657601	-90.55168873	1970	Building	Non-Contributing
455	CENTRAL AVENUE	30.06585868	-90.5522152	1975	Building	Non-Contributing
462	CENTRAL AVENUE	30.06608991	-90.55170019	1965	Building	Contributing
467	CENTRAL AVENUE	30.06603017	-90.55240162	1980	Building	Non-Contributing
191-193	CENTRAL AVENUE	30.05679729	-90.55190876	1930	Building	Contributing
230-232	CENTRAL AVENUE	30.05816902	-90.55125095	1940	Building	Contributing
289-291	CENTRAL AVENUE	30.06012805	-90.55201538	1940	Building	Contributing
371-373	CENTRAL AVENUE	30.0629539	-90.55219156	1975	Building	Non-Contributing
445-451	CENTRAL AVENUE	30.06545738	-90.5523131	1980	Building	Non-Contributing
LOT 34	CENTRAL AVENUE	30.06361887	-90.55237312	2015	Building	Non-Contributing
131	CORNLAND DRIVE	30.0571757	-90.55296957	1960	Building	Contributing
147	CORNLAND DRIVE	30.05719784	-90.55366587	1930	Building	Contributing
184	CORNLAND DRIVE	30.0574479	-90.5551482	1945	Building	Non-Contributing
158	DELANEUVILLE DRIVE	30.0514672	-90.53960583	1925	Building	Contributing
100	EAST 10TH STREET	30.05267451	-90.54613323	N/A	Site	Non-Contributing
116	EAST 10TH STREET	30.05302792	-90.54614268	1975	Building	Non-Contributing
121	EAST 10TH STREET	30.05302434	-90.54642699	N/A	Site	Non-Contributing

Street Number	Street Name	Latitude	Longitude	Estimated Construction Date	Resource Type	Resource Count
126	EAST 10TH STREET	30.05337559	-90.54616615	1975	Building	Non-Contributing
131	EAST 10TH STREET	30.05337884	-90.54644016	1970	Building	Non-Contributing
101	EAST 11TH STREET	30.05257989	-90.5459879	N/A	Site	Non-Contributing
110	EAST 12TH STREET	30.05265704	-90.54539602	1980	Building	Non-Contributing
113	EAST 12TH STREET	30.05272176	-90.54573298	1970	Building	Non-Contributing
114	EAST 12TH STREET	30.05277922	-90.54543994	1975	Building	Non-Contributing
118	EAST 12TH STREET	30.053067	-90.545427	N/A	Site	Non-Contributing
125	EAST 12TH STREET	30.05313907	-90.54580003	1935	Building	Contributing
115	EAST 13TH STREET	30.05256174	-90.5451232	1940	Building	Non-Contributing
123	EAST 13TH STREET	30.05293047	-90.54512071	1930	Building	Contributing
LOT 4-7	EAST 13TH STREET	30.05276695	-90.54462632	N/A	Site	Non-Contributing
109	EAST 15TH STREET	30.05211616	-90.54355677	N/A	Site	Non-Contributing
121	EAST 15TH STREET	30.05257289	-90.54363851	1935	Building	Contributing
110-118	EAST 15TH STREET	30.052391	-90.543236	1980	Building	Non-Contributing
104	EAST 16TH STREET	30.05186595	-90.54221325	1960	Building	Contributing
109	EAST 16TH STREET	30.05186686	-90.54247938	N/A	Site	Non-Contributing
115	EAST 16TH STREET	30.05217647	-90.5425455	1980	Building	Non-Contributing
123	EAST 16TH STREET	30.05249366	-90.54252874	1935	Building	Contributing
LOT A AND 1	EAST 16TH STREET	30.05223123	-90.54219523	N/A	Site	Non-Contributing
107	EAST 17TH STREET	30.05167379	-90.54138414	1975	Building	Non-Contributing
108	EAST 17TH STREET	30.05179482	-90.54110513	1935	Building	Contributing
113	EAST 17TH STREET	30.05192559	-90.54136747	1930	Building	Contributing
116	EAST 17TH STREET	30.05206067	-90.54110985	1960	Building	Contributing
127	EAST 19TH STREET	30.051718	-90.539371	1935	Building	Contributing
108	EAST 1ST STREET	30.0537762	-90.55052892	1935	Building	Contributing
116	EAST 1ST STREET	30.05405594	-90.55067164	1935	Building	Contributing
116	EAST 20TH STREET	30.05115407	-90.53831499	1980	Building	Non-Contributing
125	EAST 20TH STREET	30.05154215	-90.5387629	1940	Building	Contributing
UNKNOWN	EAST 20TH STREET	30.05156894	-90.53842041	N/A	Site	Non-Contributing
123	EAST 21ST STREET	30.05139344	-90.53818473	N/A	Site	Non-Contributing
110	EAST 22ND STREET	30.05100519	-90.5371898	1955	Building	Contributing
108	EAST 23RD STREET	30.05082904	-90.53649008	1940	Building	Contributing
119	EAST 24TH STREET	30.05106294	-90.53608675	1935	Building	Contributing
120	EAST 24TH STREET	30.05112955	-90.53582741	1990	Building	Non-Contributing

Street Number	Street Name	Latitude	Longitude	Estimated Construction Date	Resource Type	Resource Count
123	EAST 24TH STREET	30.05130527	-90.53614408	1930	Building	Contributing
UNKNOWN	EAST 24TH STREET	30.05072511	-90.5357816	N/A	Site	Non-Contributing
108	EAST 25TH STREET	30.05075358	-90.53502794	1980	Building	Non-Contributing
114	EAST 25TH STREET	30.05090681	-90.53513758	1960	Building	Contributing
120	EAST 25TH STREET	30.05111692	-90.53517781	1960	Building	Contributing
121	EAST 25TH STREET	30.05107542	-90.53545173	1930	Building	Contributing
118	EAST 26TH STREET	30.05103857	-90.53428061	1950	Building	Contributing
119	EAST 26TH STREET	30.05096594	-90.53471762	1960	Building	Contributing
124	EAST 26TH STREET	30.05120311	-90.53429168	1955	Building	Contributing
125	EAST 26TH STREET	30.05115557	-90.53475602	1980	Building	Non-Contributing
126	EAST 27TH STREET	30.05128311	-90.5334467	1975	Building	Non-Contributing
113	EAST 28TH STREET	30.05090652	-90.53312223	1980	Building	Non-Contributing
114	EAST 28TH STREET	30.05102537	-90.5327338	1975	Building	Non-Contributing
121	EAST 28TH STREET	30.05108319	-90.53313834	1930	Building	Contributing
122	EAST 28TH STREET	30.05129708	-90.53279081	1975	Building	Non-Contributing
119	EAST 29TH STREET	30.05105656	-90.53234305	1980	Building	Non-Contributing
127	EAST 29TH STREET	30.05134887	-90.53240488	1980	Building	Non-Contributing
114	EAST 2ND STREET	30.054116	-90.550236	1970	Building	Non-Contributing
108	EAST 30TH STREET	30.05093438	-90.52984424	1990	Building	Non-Contributing
114	EAST 30TH STREET	30.05110776	-90.5299198	1935	Building	Contributing
117	EAST 30TH STREET	30.05107012	-90.53031567	1935	Building	Contributing
120	EAST 30TH STREET	30.05128509	-90.52993222	1935	Building	Contributing
121	EAST 30TH STREET	30.05116655	-90.53043097	1980	Building	Non-Contributing
113-115	EAST 30TH STREET	30.05097117	-90.53028176	1935	Building	Contributing
113	EAST 31ST STREET	30.05099914	-90.52939373	1935	Building	Contributing
117	EAST 31ST STREET	30.05119064	-90.52953109	1940	Building	Contributing
123	EAST 31ST STREET	30.05132264	-90.52949951	1980	Building	Non-Contributing
115	EAST 3RD STREET	30.05371308	-90.54991562	1940	Building	Contributing
124	EAST 3RD STREET	30.05399371	-90.54973282	1930	Building	Contributing
117	EAST 4TH STREET	30.05371284	-90.54953435	1935	Building	Contributing
114	EAST 5TH STREET	30.05328736	-90.54869983	1930	Building	Contributing
116	EAST 5TH STREET	30.05349852	-90.54869586	1930	Building	Contributing
120	EAST 5TH STREET	30.05372701	-90.54872391	2000	Building	Non-Contributing
127	EAST 5TH STREET	30.05386893	-90.54906428	2010	Building	Non-Contributing

Street Number	Street Name	Latitude	Longitude	Estimated Construction Date	Resource Type	Resource Count
LOT 1	EAST 5TH STREET	30.05322995	-90.54907019	N/A	Site	Non-Contributing
113	EAST 6TH STREET	30.05327982	-90.54850135	1990	Building	Non-Contributing
119	EAST 6TH STREET	30.05346502	-90.54844575	1930	Building	Contributing
108	EAST 7TH STREET	30.05310317	-90.5477147	N/A	Site	Non-Contributing
115	EAST 7TH STREET	30.05322294	-90.54809969	1940	Building	Non-Contributing
120	EAST 7TH STREET	30.05343305	-90.54772476	N/A	Site	Non-Contributing
127	EAST 7TH STREET	30.05353378	-90.54812464	N/A	Site	Non-Contributing
127	EAST 9TH STREET	30.05340199	-90.54704256	1970	Building	Non-Contributing
LOT 2	EAST 9TH STREET	30.05345597	-90.54671332	N/A	Site	Non-Contributing
115-147	FALGOUST LANE	30.06237258	-90.55415712	1975	Building	Non-Contributing
105	FIREHOUSE LANE	30.060482	-90.562191	1975	Building	Non-Contributing
117	GODCHAUX DRIVE	30.05810692	-90.56237374	1970	Building	Non-Contributing
123	GODCHAUX DRIVE	30.05811591	-90.56267884	1935	Building	Contributing
129	GODCHAUX DRIVE	30.05811272	-90.56288973	1940	Building	Contributing
135	GODCHAUX DRIVE	30.05811133	-90.56312475	1935	Building	Contributing
141	GODCHAUX DRIVE	30.05808544	-90.56338627	1940	Building	Contributing
146	HART DRIVE	30.05793077	-90.5592037	1935	Building	Contributing
147	HART DRIVE	30.05766525	-90.55915643	1940	Building	Non-Contributing
153	HART DRIVE	30.05753379	-90.5593824	1935	Building	Contributing
710	HIGHWAY 44	30.05110964	-90.52889439	2017	Building	Non-Contributing
750	HIGHWAY 44	30.05071362	-90.53027375	N/A	Site	Non-Contributing
764	HIGHWAY 44	30.05109574	-90.53086951	1935	Building	Contributing
822	HIGHWAY 44	30.05052387	-90.53309509	1925	Building	Contributing
830	HIGHWAY 44	30.05084959	-90.53335488	1935	Building	Contributing
846	HIGHWAY 44	30.05059571	-90.5337026	2000	Building	Non-Contributing
850	HIGHWAY 44	30.0505693	-90.53413577	1960	Building	Contributing
864	HIGHWAY 44	30.05058523	-90.53460313	1965	Building	Contributing
872	HIGHWAY 44	30.05055225	-90.53493504	1940	Building	Contributing
882	HIGHWAY 44	30.05060209	-90.53540379	N/A	Site	Non-Contributing
886	HIGHWAY 44	30.05075	-90.53564	1975	Building	Non-Contributing
900	HIGHWAY 44	30.050901	-90.536222	1930	Building	Contributing
910	HIGHWAY 44	30.0506085	-90.53639256	N/A	Site	Non-Contributing
918	HIGHWAY 44	30.05102502	-90.53689885	N/A	Site	Non-Contributing
926	HIGHWAY 44	30.05071168	-90.53713888	1925	Building	Contributing

Street Number	Street Name	Latitude	Longitude	Estimated Construction Date	Resource Type	Resource Count
944	HIGHWAY 44	30.050812	-90.537861	1960	Building	Contributing
952	HIGHWAY 44	30.05081081	-90.53816571	1940	Building	Non-Contributing
964	HIGHWAY 44	30.05088969	-90.53863987	1930	Building	Non-Contributing
974	HIGHWAY 44	30.05131775	-90.53902611	1935	Building	Contributing
980	HIGHWAY 44	30.05107155	-90.53931534	1945	Building	Contributing
1000	HIGHWAY 44	30.05148955	-90.54021265	1990	Building	Non-Contributing
1022	HIGHWAY 44	30.05144486	-90.54075848	1999	Building	Non-Contributing
1048	HIGHWAY 44	30.05213845	-90.54180387	1905	Building	Contributing
1074	HIGHWAY 44	30.05224321	-90.54275706	1980	Building	Non-Contributing
1078	HIGHWAY 44	30.05213497	-90.54299209	1940	Building	Contributing
1082	HIGHWAY 44	30.05189439	-90.54297801	1950	Building	Contributing
1104	HIGHWAY 44	30.05227967	-90.54377174	1990	Building	Non-Contributing
1108	HIGHWAY 44	30.05212652	-90.54416514	N/A	Site	Non-Contributing
1126	HIGHWAY 44	30.0524153	-90.54476839	1975	Building	Non-Contributing
1136	HIGHWAY 44	30.05233945	-90.54513061	N/A	Site	Non-Contributing
1142	HIGHWAY 44	30.05241574	-90.54535669	N/A	Site	Non-Contributing
1152	HIGHWAY 44	30.05241066	-90.54577321	2010	Building	Non-Contributing
1170	HIGHWAY 44	30.05275774	-90.54642968	1980	Building	Non-Contributing
1176	HIGHWAY 44	30.05287586	-90.54668617	1990	Building	Non-Contributing
1186	HIGHWAY 44	30.05265617	-90.54702848	1940	Building	Contributing
1200	HIGHWAY 44	30.053051	-90.547474	2000	Building	Non-Contributing
1204	HIGHWAY 44	30.05281548	-90.5476995	N/A	Site	Non-Contributing
1212	HIGHWAY 44	30.05295944	-90.54805342	1975	Building	Non-Contributing
1244	HIGHWAY 44	30.05336978	-90.54930065	1935	Building	Contributing
1252	HIGHWAY 44	30.05326618	-90.54953367	N/A	Site	Non-Contributing
1256	HIGHWAY 44	30.0533129	-90.54969527	1935	Building	Contributing
1262	HIGHWAY 44	30.05334482	-90.54997321	1940	Building	Contributing
1270	HIGHWAY 44	30.05385429	-90.55028073	N/A	Site	Non-Contributing
1278	HIGHWAY 44	30.05333641	-90.55015124	1970	Building	Non-Contributing
1278	HIGHWAY 44	30.05347416	-90.55024199	N/A	Site	Non-Contributing
1288	HIGHWAY 44	30.05371512	-90.55094317	1990	Building	Non-Contributing
1296	HIGHWAY 44	30.05386065	-90.55129331	1990	Building	Non-Contributing
1310	HIGHWAY 44	30.05394177	-90.55175889	N/A	Site	Non-Contributing
1320	HIGHWAY 44	30.05396063	-90.55202108	1945	Building	Contributing

Street Number	Street Name	Latitude	Longitude	Estimated Construction Date	Resource Type	Resource Count
1334	HIGHWAY 44	30.05432048	-90.55259474	1935	Building	Contributing
1342	HIGHWAY 44	30.05417628	-90.55300152	1980	Building	Non-Contributing
1360	HIGHWAY 44	30.05429146	-90.55354189	1950	Building	Contributing
1370	HIGHWAY 44	30.05447254	-90.55396669	1940	Building	Contributing
1388	HIGHWAY 44	30.05467684	-90.5547452	2000	Building	Non-Contributing
1402	HIGHWAY 44	30.0547224	-90.55507611	1975	Building	Non-Contributing
1414	HIGHWAY 44	30.05493192	-90.55564374	1975	Building	Non-Contributing
1420	HIGHWAY 44	30.05498445	-90.55590224	1930	Building	Contributing
1426	HIGHWAY 44	30.05496816	-90.5561636	1930	Building	Contributing
1432	HIGHWAY 44	30.054959	-90.556384	1930	Building	Contributing
1438	HIGHWAY 44	30.05455495	-90.55657293	1925	Building	Contributing
1448	HIGHWAY 44	30.05469231	-90.55693916	N/A	Site	Non-Contributing
1454	HIGHWAY 44	30.0544303	-90.55719076	1940	Building	Contributing
1462	HIGHWAY 44	30.054442	-90.557516	1960	Building	Contributing
1482	HIGHWAY 44	30.05474506	-90.55834016	1925	Building	Contributing
1488	HIGHWAY 44	30.05501708	-90.55852154	1935	Building	Contributing
1490	HIGHWAY 44	30.05474533	-90.55865049	1935	Building	Contributing
1504	HIGHWAY 44	30.05475055	-90.55910178	1950	Building	Contributing
1508	HIGHWAY 44	30.05496724	-90.55930525	N/A	Site	Non-Contributing
1524	HIGHWAY 44	30.0549653	-90.55992991	1975	Building	Non-Contributing
1550	HIGHWAY 44	30.05569427	-90.56088846	1967	Building	Contributing
1564	HIGHWAY 44	30.0557887	-90.56120335	1920	Building	Contributing
1580	HIGHWAY 44	30.05510546	-90.56184065	1904	Building	Non-Contributing
1590	HIGHWAY 44	30.055282	-90.562143	N/A	Site	Non-Contributing
1600	HIGHWAY 44	30.0558512	-90.56258688	1908	Building	Contributing
1610	HIGHWAY 44	30.0558528	-90.56286129	1950	Building	Contributing
1618	HIGHWAY 44	30.05557935	-90.56309316	1965	Building	Contributing
1628	HIGHWAY 44	30.0556815	-90.56356363	1850	Building	Contributing
1692	HIGHWAY 44	30.056484	-90.566107	1900	Building	Contributing
1228-1232	HIGHWAY 44	30.05301864	-90.54882623	1930	Building	Contributing
376 and 138	HIGHWAY 44	30.05459762	-90.55431169	2000	Building	Non-Contributing
1468-1470	HIGHWAY 44	30.054532	-90.557736	1935	Building	Contributing
1512-1516	HIGHWAY 44	30.05478944	-90.55954903	1935	Building	Contributing
LOT 1	HIGHWAY 44	30.05066804	-90.53266604	N/A	Site	Non-Contributing

Street Number	Street Name	Latitude	Longitude	Estimated Construction Date	Resource Type	Resource Count
LOT 1-2	HIGHWAY 44	30.05073399	-90.52973026	N/A	Site	Non-Contributing
LOT 21-22	HIGHWAY 44	30.05077259	-90.5293627	N/A	Site	Non-Contributing
UNKNOWN	HIGHWAY 44	30.050973	-90.534033	N/A	Site	Non-Contributing
UNKNOWN	HIGHWAY 44	30.05455815	-90.55854857	1930	Building	Contributing
UNKNOWN	HIGHWAY 44	30.05458891	-90.55804364	N/A	Site	Non-Contributing
UNKNOWN	HIGHWAY 44	30.05477689	-90.55890838	N/A	Site	Non-Contributing
UNKNOWN	HIGHWAY 44	30.05208534	-90.54324456	N/A	Site	Non-Contributing
162	HOTARD DRIVE	30.05609241	-90.55258937	1935	Building	Contributing
174	HOTARD DRIVE	30.05638261	-90.55232484	1980	Building	Non-Contributing
185	HOTARD DRIVE	30.0568	-90.552704	1940	Building	Contributing
195	HOTARD DRIVE	30.05707843	-90.55271247	1975	Building	Non-Contributing
196	HOTARD DRIVE	30.05715481	-90.55232819	1960	Building	Contributing
208	HOTARD DRIVE	30.05755266	-90.55240564	1960	Building	Contributing
211	HOTARD DRIVE	30.05762956	-90.5527151	1970	Building	Non-Contributing
222	HOTARD DRIVE	30.05803843	-90.55238921	1970	Building	Non-Contributing
223	HOTARD DRIVE	30.05805224	-90.55274389	1940	Building	Contributing
228	HOTARD DRIVE	30.05829743	-90.55239843	1970	Building	Non-Contributing
229	HOTARD DRIVE	30.05829395	-90.55274839	1940	Building	Contributing
236	HOTARD DRIVE	30.05854336	-90.55240698	1970	Building	Non-Contributing
237	HOTARD DRIVE	30.05853722	-90.55275477	1940	Building	Contributing
245	HOTARD DRIVE	30.05883153	-90.55275732	1940	Building	Contributing
253	HOTARD DRIVE	30.05908136	-90.55273321	1940	Building	Contributing
260	HOTARD DRIVE	30.0592116	-90.55242767	N/A	Site	Non-Contributing
261	HOTARD DRIVE	30.05933933	-90.55279154	2010	Building	Non-Contributing
270	HOTARD DRIVE	30.05975865	-90.55242576	1965	Building	Contributing
273	HOTARD DRIVE	30.05979434	-90.55278087	2005	Building	Non-Contributing
279	HOTARD DRIVE	30.0601208	-90.55279152	2000	Building	Non-Contributing
284	HOTARD DRIVE	30.06018231	-90.55244822	1980	Building	Non-Contributing
289	HOTARD DRIVE	30.06039763	-90.55283882	1990	Building	Non-Contributing
298	HOTARD DRIVE	30.06065995	-90.55244688	1970	Building	Non-Contributing
107	LAPEYROLERIE DRIVE	30.05445803	-90.55748474	1940	Building	Contributing
111	LAPEYROLERIE DRIVE	30.05464057	-90.55749245	1975	Building	Non-Contributing
116	LAPEYROLERIE DRIVE	30.05491654	-90.55715181	1930	Building	Contributing
119	LAPEYROLERIE DRIVE	30.05491045	-90.55746093	1935	Building	Contributing

Street Number	Street Name	Latitude	Longitude	Estimated Construction Date	Resource Type	Resource Count
123	LAPEYROLERIE DRIVE	30.05516896	-90.55748725	1930	Building	Contributing
130	LAPEYROLERIE DRIVE	30.05533791	-90.55720847	1935	Building	Contributing
131	LAPEYROLERIE DRIVE	30.05537766	-90.55748172	1930	Building	Contributing
137	LAPEYROLERIE DRIVE	30.05575115	-90.55745792	1920	Building	Contributing
155	LAPEYROLERIE DRIVE	30.05620117	-90.55749619	1970	Building	Non-Contributing
130	LE BRUN PLACE	30.05538898	-90.55827364	1935	Building	Contributing
135	LE BRUN PLACE	30.05554162	-90.55859551	1930	Building	Contributing
137	LE BRUN PLACE	30.05595979	-90.55864178	1930	Building	Contributing
151	LE BRUN PLACE	30.05612404	-90.55866927	1975	Building	Non-Contributing
157	LE BRUN PLACE	30.05633966	-90.55875443	1990	Building	Non-Contributing
UNKNOWN	LE BRUN PLACE	30.05606485	-90.55831891	N/A	Site	Non-Contributing
101	LEBLANC DRIVE	30.05552508	-90.55524644	2000	Building	Non-Contributing
111	LEBLANC DRIVE	30.05556455	-90.55568464	1940	Building	Non-Contributing
105	MARMILLIAN LOOP	30.05654308	-90.56193117	1975	Building	Non-Contributing
111	MARMILLIAN LOOP	30.05648911	-90.56222789	1970	Building	Non-Contributing
112	MARMILLIAN LOOP	30.05687825	-90.56227114	1975	Building	Non-Contributing
116	MARMILLIAN LOOP	30.0569006	-90.56244951	1980	Building	Non-Contributing
120	MARMILLIAN LOOP	30.05700913	-90.56260977	1975	Building	Non-Contributing
126	MARMILLIAN LOOP	30.0568652	-90.56283139	1975	Building	Non-Contributing
146	MARMILLIAN LOOP	30.05687332	-90.56316599	1975	Building	Non-Contributing
166	MARMILLIAN LOOP	30.05727988	-90.56320924	1975	Building	Non-Contributing
169	MARMILLIAN LOOP	30.05769659	-90.56315392	1975	Building	Non-Contributing
172	MARMILLIAN LOOP	30.05727204	-90.56290649	1975	Building	Non-Contributing
175	MARMILLIAN LOOP	30.05767628	-90.56286156	1975	Building	Non-Contributing
182	MARMILLIAN LOOP	30.05725608	-90.56249678	1980	Building	Non-Contributing
185	MARMILLIAN LOOP	30.05768324	-90.56254137	1975	Building	Non-Contributing
190	MARMILLIAN LOOP	30.05729207	-90.56226712	1975	Building	Non-Contributing
191	MARMILLIAN LOOP	30.05782775	-90.562305	1975	Building	Non-Contributing
196	MARMILLIAN LOOP	30.05736084	-90.56200963	1970	Building	Non-Contributing
106	NORTHWEST 1ST STREET	30.06157068	-90.55339994	1950	Building	Non-Contributing
110	NORTHWEST 1ST STREET	30.06169187	-90.55339775	1935	Building	Contributing
111	NORTHWEST 1ST STREET	30.06209691	-90.55378228	1990	Building	Non-Contributing
112	NORTHWEST 1ST STREET	30.06180032	-90.55342661	1930	Building	Contributing
120	NORTHWEST 1ST STREET	30.06212033	-90.55345906	1930	Building	Contributing

Street Number	Street Name	Latitude	Longitude	Estimated Construction Date	Resource Type	Resource Count
126	NORTHWEST 1ST STREET	30.06224113	-90.55343494	1930	Building	Contributing
128	NORTHWEST 1ST STREET	30.06235235	-90.55349062	1935	Building	Contributing
131	NORTHWEST 1ST STREET	30.0623902	-90.55381588	1940	Building	Contributing
132	NORTHWEST 1ST STREET	30.06245325	-90.55336453	1935	Building	Contributing
134	NORTHWEST 1ST STREET	30.06254556	-90.55344011	1930	Building	Contributing
138	NORTHWEST 1ST STREET	30.06268208	-90.55345928	1930	Building	Contributing
142	NORTHWEST 1ST STREET	30.06280406	-90.55346946	1935	Building	Contributing
143	NORTHWEST 1ST STREET	30.0628285	-90.55378835	1940	Building	Contributing
144	NORTHWEST 1ST STREET	30.0629094	-90.55344064	1930	Building	Contributing
150	NORTHWEST 1ST STREET	30.06309917	-90.55342589	1975	Building	Non-Contributing
152	NORTHWEST 1ST STREET	30.06319464	-90.55342488	1980	Building	Non-Contributing
165	NORTHWEST 1ST STREET	30.06356374	-90.55383895	1940	Building	Non-Contributing
304	NORTHWEST 2ND STREET	30.06145168	-90.55448448	2005	Building	Non-Contributing
305	NORTHWEST 2ND STREET	30.06146433	-90.55495877	1930	Building	Contributing
308	NORTHWEST 2ND STREET	30.06162654	-90.55453498	1935	Building	Contributing
311	NORTHWEST 2ND STREET	30.06169161	-90.55500202	1960	Building	Contributing
314	NORTHWEST 2ND STREET	30.06179288	-90.55457785	1940	Building	Contributing
318	NORTHWEST 2ND STREET	30.06193324	-90.55459563	1940	Building	Contributing
319	NORTHWEST 2ND STREET	30.0619614	-90.55492457	1930	Building	Contributing
323	NORTHWEST 2ND STREET	30.06210765	-90.55493262	1930	Building	Contributing
328	NORTHWEST 2ND STREET	30.0622568	-90.55456549	1935	Building	Contributing
329	NORTHWEST 2ND STREET	30.06225314	-90.55497724	1935	Building	Contributing
332	NORTHWEST 2ND STREET	30.06244261	-90.55462326	1940	Building	Contributing
333	NORTHWEST 2ND STREET	30.06242234	-90.55496894	1940	Building	Contributing
338	NORTHWEST 2ND STREET	30.06261488	-90.55451319	1970	Building	Non-Contributing
339	NORTHWEST 2ND STREET	30.06257512	-90.55493195	1935	Building	Contributing
344	NORTHWEST 2ND STREET	30.06281887	-90.554596	1945	Building	Contributing
345	NORTHWEST 2ND STREET	30.06277824	-90.55500638	1975	Building	Non-Contributing
352	NORTHWEST 2ND STREET	30.06309367	-90.55458675	1930	Building	Non-Contributing
353	NORTHWEST 2ND STREET	30.06309593	-90.55504352	1975	Building	Non-Contributing
356	NORTHWEST 2ND STREET	30.06329156	-90.55457253	1935	Building	Contributing
357	NORTHWEST 2ND STREET	30.063331	-90.554999	1955	Building	Non-Contributing
362	NORTHWEST 2ND STREET	30.06343745	-90.55460962	1940	Building	Contributing
363	NORTHWEST 2ND STREET	30.06342823	-90.55501811	1950	Building	Non-Contributing

Street Number	Street Name	Latitude	Longitude	Estimated Construction Date	Resource Type	Resource Count
366	NORTHWEST 2ND STREET	30.06360001	-90.55460036	1955	Building	Contributing
367	NORTHWEST 2ND STREET	30.063692	-90.555046	N/A	Site	Non-Contributing
LOT 10	NORTHWEST 2ND STREET	30.06294752	-90.55452909	N/A	Site	Non-Contributing
105	PARKER LANE	30.05591452	-90.55550292	1965	Building	Contributing
106	PARKER LANE	30.05603803	-90.55515083	1960	Building	Contributing
109	PARKER LANE	30.05619166	-90.55553779	1975	Building	Non-Contributing
116	PARKER LANE	30.05636839	-90.55517502	1970	Building	Non-Contributing
117	PARKER LANE	30.0563773	-90.55552799	1965	Building	Contributing
124	PARKER LANE	30.05663277	-90.55523352	1950	Building	Contributing
138	PARKER LANE	30.05710406	-90.55520277	1955	Building	Contributing
139	PARKER LANE	30.05714088	-90.55552673	1955	Building	Contributing
149	PARKER LANE	30.05749438	-90.55554629	1955	Building	Non-Contributing
160	PARKER LANE	30.0578524	-90.555244	1950	Building	Contributing
161	PARKER LANE	30.05787912	-90.55559948	1955	Building	Contributing
168	PARKER LANE	30.05817524	-90.55521603	1960	Building	Contributing
175	PARKER LANE	30.05835996	-90.55558205	1970	Building	Non-Contributing
178	PARKER LANE	30.05844832	-90.5552257	1955	Building	Contributing
184	PARKER LANE	30.05869476	-90.55523187	1975	Building	Non-Contributing
189	PARKER LANE	30.05876548	-90.55561948	1955	Building	Contributing
190	PARKER LANE	30.05891607	-90.55523736	1940	Building	Contributing
200	PARKER LANE	30.05927201	-90.55524948	1975	Building	Non-Contributing
201	PARKER LANE	30.05920582	-90.5556143	1955	Building	Contributing
211	PARKER LANE	30.05956481	-90.55561122	1940	Building	Contributing
212	PARKER LANE	30.059689	-90.55525213	1975	Building	Non-Contributing
218	PARKER LANE	30.05986921	-90.55524543	1975	Building	Non-Contributing
225	PARKER LANE	30.06006327	-90.55564761	1955	Building	Contributing
231	PARKER LANE	30.06029026	-90.5556092	1940	Building	Contributing
232	PARKER LANE	30.06034485	-90.55533853	1965	Building	Contributing
238	PARKER LANE	30.06054196	-90.55528823	1965	Building	Contributing
244	PARKER LANE	30.06079747	-90.55529568	1975	Building	Non-Contributing
245	PARKER LANE	30.06074933	-90.55563871	1940	Building	Contributing
123-129	PARKER LANE	30.05660983	-90.55550862	1965	Building	Contributing
107	PILGRIM STREET	30.06350765	-90.55330769	1955	Building	Contributing
127	PILGRIM STREET	30.06352486	-90.55415142	1935	Building	Contributing

Street Number	Street Name	Latitude	Longitude	Estimated Construction Date	Resource Type	Resource Count
116	RAILROAD AVENUE	30.06152713	-90.55260733	1960	Building	Contributing
128	RAILROAD AVENUE	30.06145359	-90.55306513	1965	Building	Contributing
136	RAILROAD AVENUE	30.06144307	-90.55339704	1960	Building	Contributing
146	RAILROAD AVENUE	30.06147652	-90.55379603	1935	Building	Contributing
154	RAILROAD AVENUE	30.06164076	-90.55413567	1935	Building	Contributing
158	RAILROAD AVENUE	30.06146346	-90.55424195	1970	Building	Non-Contributing
133	RAM ALLEY	30.05866291	-90.56012303	1960	Building	Non-Contributing
147	RAM ALLEY	30.05909442	-90.56006569	1940	Building	Contributing
103	TERRANCE STREET	30.057903	-90.559643	1930	Building	Contributing
105	TERRANCE STREET	30.058028	-90.559659	1930	Building	Contributing
108	TERRANCE STREET	30.0581429	-90.55922415	1935	Building	Contributing
109	TERRANCE STREET	30.058174	-90.559638	1930	Building	Contributing
113	TERRANCE STREET	30.05831	-90.559636	1930	Building	Contributing
114	TERRANCE STREET	30.05832685	-90.55919801	1935	Building	Contributing
117	TERRANCE STREET	30.058453	-90.559643	1930	Building	Contributing
120	TERRANCE STREET	30.05852333	-90.55919833	1935	Building	Contributing
124	TERRANCE STREET	30.05865014	-90.55916481	1970	Building	Non-Contributing
125	TERRANCE STREET	30.058715	-90.559662	1935	Building	Contributing
128	TERRANCE STREET	30.05880394	-90.55923086	1940	Building	Contributing
132	TERRANCE STREET	30.05894077	-90.55925556	1935	Building	Contributing
135	TERRANCE STREET	30.059008	-90.559678	1935	Building	Contributing
136	TERRANCE STREET	30.05906743	-90.55926539	1935	Building	Contributing
137	TERRANCE STREET	30.0590796	-90.55962366	1935	Building	Contributing
140	TERRANCE STREET	30.05921049	-90.55924226	1935	Building	Contributing
141	TERRANCE STREET	30.05921298	-90.55963856	1935	Building	Contributing
146	TERRANCE STREET	30.05938849	-90.55925111	1935	Building	Contributing
150	TERRANCE STREET	30.05951112	-90.55925332	1935	Building	Non-Contributing
151	TERRANCE STREET	30.0595003	-90.5596686	1935	Building	Contributing
154	TERRANCE STREET	30.05962928	-90.55921791	1935	Building	Contributing
155	TERRANCE STREET	30.0596385	-90.55966408	1940	Building	Contributing
158	TERRANCE STREET	30.05982597	-90.55923119	1935	Building	Contributing
161	TERRANCE STREET	30.05986568	-90.55969562	1940	Building	Contributing
166	TERRANCE STREET	30.06010954	-90.55921377	1935	Building	Contributing
167	TERRANCE STREET	30.06006107	-90.55967132	1940	Building	Contributing

Street Number	Street Name	Latitude	Longitude	Estimated Construction Date	Resource Type	Resource Count
174	TERRANCE STREET	30.06033234	-90.55918246	1935	Building	Contributing
175	TERRANCE STREET	30.06031491	-90.55967626	1940	Building	Contributing
181	TERRANCE STREET	30.06056891	-90.55970748	1935	Building	Contributing
129-131	TERRANCE STREET	30.058856	-90.559658	1935	Building	Contributing
118	WEST 10TH STREET	30.05624099	-90.56378894	1975	Building	Non-Contributing
130	WEST 10TH STREET	30.05663275	-90.56379966	N/A	Site	Non-Contributing
136	WEST 10TH STREET	30.05679664	-90.56367366	1935	Building	Contributing
162	WEST 10TH STREET	30.057513	-90.563634	1938	Building	Contributing
170	WEST 10TH STREET	30.058086	-90.563688	1980	Building	Non-Contributing
190	WEST 10TH STREET	30.05858863	-90.56380838	1980	Building	Non-Contributing
196	WEST 10TH STREET	30.058871	-90.563854	1970	Building	Non-Contributing
212	WEST 10TH STREET	30.059439	-90.563865	1975	Building	Non-Contributing
228	WEST 10TH STREET	30.05992	-90.563833	1975	Building	Non-Contributing
LOT 3	WEST 10TH STREET	30.059244	-90.563886	N/A	Site	Non-Contributing
LOT 5	WEST 10TH STREET	30.059702	-90.563859	N/A	Site	Non-Contributing
LOT 7	WEST 10TH STREET	30.060324	-90.56387	N/A	Site	Non-Contributing
114	WEST 1ST STREET	30.05463187	-90.55314545	1935	Building	Contributing
118	WEST 1ST STREET	30.05475637	-90.55318545	1925	Building	Contributing
119	WEST 1ST STREET	30.0547712	-90.5535896	1930	Building	Contributing
124	WEST 1ST STREET	30.05492961	-90.55318895	1925	Building	Contributing
125	WEST 1ST STREET	30.05494121	-90.5536579	1935	Building	Contributing
128	WEST 1ST STREET	30.05512926	-90.5531865	1935	Building	Contributing
131	WEST 1ST STREET	30.05510546	-90.55364717	1960	Building	Contributing
132	WEST 1ST STREET	30.05524513	-90.55322075	1940	Building	Contributing
137	WEST 1ST STREET	30.0553617	-90.55368472	1975	Building	Non-Contributing
138	WEST 1ST STREET	30.05541583	-90.55323296	1940	Building	Contributing
142	WEST 1ST STREET	30.0555842	-90.55325618	1935	Building	Contributing
147	WEST 1ST STREET	30.05574853	-90.55362672	1930	Building	Contributing
148	WEST 1ST STREET	30.05575318	-90.55321433	1925	Building	Contributing
152	WEST 1ST STREET	30.0559147	-90.55323948	1930	Building	Contributing
155	WEST 1ST STREET	30.0559655	-90.55364037	1930	Building	Contributing
156	WEST 1ST STREET	30.05607789	-90.55326549	1930	Building	Contributing
163	WEST 1ST STREET	30.05626218	-90.5536522	1975	Building	Non-Contributing
166	WEST 1ST STREET	30.05642473	-90.55321937	1940	Building	Contributing

Street Number	Street Name	Latitude	Longitude	Estimated Construction Date	Resource Type	Resource Count
169	WEST 1ST STREET	30.05644181	-90.55365186	1930	Building	Contributing
172	WEST 1ST STREET	30.05661222	-90.5530556	1940	Building	Contributing
173	WEST 1ST STREET	30.05659851	-90.55369545	1935	Building	Contributing
177	WEST 1ST STREET	30.05675434	-90.55365622	1965	Building	Contributing
182	WEST 1ST STREET	30.05694812	-90.55322475	1935	Building	Contributing
183	WEST 1ST STREET	30.05691685	-90.55369008	1935	Building	Contributing
185	WEST 1ST STREET	30.05703931	-90.55369042	1935	Building	Contributing
188	WEST 1ST STREET	30.05709582	-90.5532497	1930	Building	Contributing
196	WEST 1ST STREET	30.05743687	-90.55312011	1930	Building	Non-Contributing
197	WEST 1ST STREET	30.05740363	-90.5537416	1930	Building	Contributing
202	WEST 1ST STREET	30.05757029	-90.55326554	1930	Building	Contributing
205	WEST 1ST STREET	30.05759481	-90.55372305	1935	Building	Contributing
208	WEST 1ST STREET	30.0577504	-90.55327551	1925	Building	Contributing
209	WEST 1ST STREET	30.05778074	-90.55368874	2005	Building	Non-Contributing
214	WEST 1ST STREET	30.05790736	-90.55328824	1965	Building	Contributing
215	WEST 1ST STREET	30.05789287	-90.55371506	1935	Building	Contributing
218	WEST 1ST STREET	30.05807369	-90.5533011	1930	Building	Contributing
219	WEST 1ST STREET	30.05807528	-90.55370785	1935	Building	Contributing
222	WEST 1ST STREET	30.05823934	-90.55328791	1930	Building	Contributing
223	WEST 1ST STREET	30.05825491	-90.55369645	1935	Building	Contributing
228	WEST 1ST STREET	30.05839362	-90.5532787	1930	Building	Contributing
229	WEST 1ST STREET	30.05843396	-90.55370081	1930	Building	Contributing
234	WEST 1ST STREET	30.05862171	-90.55329613	1940	Building	Contributing
235	WEST 1ST STREET	30.05861474	-90.55369142	1975	Building	Non-Contributing
238	WEST 1ST STREET	30.05875287	-90.55326965	1930	Building	Contributing
241	WEST 1ST STREET	30.0588408	-90.55371959	1930	Building	Contributing
242	WEST 1ST STREET	30.05892	-90.55332097	1930	Building	Contributing
246	WEST 1ST STREET	30.05906627	-90.55331692	1930	Building	Contributing
249	WEST 1ST STREET	30.05908088	-90.55374596	1930	Building	Non-Contributing
252	WEST 1ST STREET	30.05928391	-90.5533186	1930	Building	Contributing
258	WEST 1ST STREET	30.05944837	-90.55335689	1930	Building	Contributing
259	WEST 1ST STREET	30.05942021	-90.55382321	1930	Building	Contributing
262	WEST 1ST STREET	30.05959063	-90.55334374	1930	Building	Contributing
266	WEST 1ST STREET	30.05973109	-90.55335397	1930	Building	Contributing

Street Number	Street Name	Latitude	Longitude	Estimated Construction Date	Resource Type	Resource Count
267	WEST 1ST STREET	30.05976358	-90.55380307	1960	Building	Contributing
273	WEST 1ST STREET	30.05990936	-90.55377247	1930	Building	Contributing
274	WEST 1ST STREET	30.06000182	-90.55330217	1930	Building	Contributing
277	WEST 1ST STREET	30.06005514	-90.55377151	1930	Building	Contributing
280	WEST 1ST STREET	30.06023631	-90.55338458	1935	Building	Contributing
281	WEST 1ST STREET	30.06022903	-90.55378564	1930	Building	Contributing
284	WEST 1ST STREET	30.06039008	-90.55331424	2000	Building	Non-Contributing
285	WEST 1ST STREET	30.06042607	-90.55385236	1930	Building	Non-Contributing
290	WEST 1ST STREET	30.06057551	-90.55334777	1930	Building	Contributing
293	WEST 1ST STREET	30.06059872	-90.55378128	1925	Building	Contributing
296	WEST 1ST STREET	30.06073701	-90.5533768	1930	Building	Contributing
300	WEST 1ST STREET	30.06092514	-90.55335714	2018	Building	Non-Contributing
303	WEST 1ST STREET	30.06094291	-90.55381757	1930	Building	Contributing
162 A-B	WEST 1ST STREET	30.05625579	-90.55325691	1930	Building	Contributing
176-178	WEST 1ST STREET	30.05672912	-90.55325709	1935	Building	Contributing
263A	WEST 1ST STREET	30.05958673	-90.55378004	1930	Building	Contributing
119	WEST 2ND STREET	30.05504829	-90.55473648	1955	Building	Contributing
122	WEST 2ND STREET	30.05521022	-90.55430096	1940	Building	Contributing
125	WEST 2ND STREET	30.05530043	-90.55477675	1945	Building	Non-Contributing
130	WEST 2ND STREET	30.05552218	-90.55432845	1960	Building	Contributing
135	WEST 2ND STREET	30.055566	-90.554769	1990	Building	Non-Contributing
138	WEST 2ND STREET	30.05572851	-90.55433381	1950	Building	Non-Contributing
139	WEST 2ND STREET	30.05571574	-90.55479984	1945	Building	Contributing
142	WEST 2ND STREET	30.05589653	-90.55438008	1935	Building	Contributing
145	WEST 2ND STREET	30.05589074	-90.55478673	1945	Building	Contributing
148	WEST 2ND STREET	30.05604314	-90.5543941	1935	Building	Contributing
149	WEST 2ND STREET	30.05604743	-90.55478979	1945	Building	Contributing
153	WEST 2ND STREET	30.05621923	-90.55476464	1945	Building	Contributing
154	WEST 2ND STREET	30.05625869	-90.55434857	1950	Building	Contributing
158	WEST 2ND STREET	30.05640176	-90.5543888	1955	Building	Contributing
159	WEST 2ND STREET	30.05642441	-90.55483602	1945	Building	Contributing
162	WEST 2ND STREET	30.05658661	-90.55434823	1950	Building	Contributing
168	WEST 2ND STREET	30.05674535	-90.55435091	1935	Building	Contributing
169	WEST 2ND STREET	30.05674419	-90.5548032	1955	Building	Contributing

Street Number	Street Name	Latitude	Longitude	Estimated Construction Date	Resource Type	Resource Count
175	WEST 2ND STREET	30.05691221	-90.55477235	1950	Building	Contributing
178	WEST 2ND STREET	30.0570486	-90.55434421	2005	Building	Non-Contributing
179	WEST 2ND STREET	30.05710943	-90.55480244	1955	Building	Contributing
180	WEST 2ND STREET	30.05720153	-90.55428252	2005	Building	Non-Contributing
188	WEST 2ND STREET	30.05741743	-90.55442434	1965	Building	Contributing
189	WEST 2ND STREET	30.05740785	-90.5548146	1955	Building	Contributing
190	WEST 2ND STREET	30.05758337	-90.55436181	1975	Building	Non-Contributing
193	WEST 2ND STREET	30.0576342	-90.55484377	1970	Building	Non-Contributing
196	WEST 2ND STREET	30.05774273	-90.55439852	1945	Building	Contributing
200	WEST 2ND STREET	30.05791326	-90.55437079	1965	Building	Contributing
201	WEST 2ND STREET	30.05786519	-90.55485819	1955	Building	Contributing
206	WEST 2ND STREET	30.05807789	-90.55446735	1935	Building	Contributing
207	WEST 2ND STREET	30.05809821	-90.55485416	1955	Building	Contributing
210	WEST 2ND STREET	30.05822594	-90.55444077	1935	Building	Contributing
215	WEST 2ND STREET	30.05840204	-90.55487864	1960	Building	Contributing
216	WEST 2ND STREET	30.05849257	-90.55444412	1945	Building	Contributing
223	WEST 2ND STREET	30.05864956	-90.55485483	1975	Building	Non-Contributing
224	WEST 2ND STREET	30.05880459	-90.5544339	1945	Building	Contributing
232	WEST 2ND STREET	30.05902797	-90.55443976	1970	Building	Non-Contributing
233	WEST 2ND STREET	30.05897661	-90.55492942	1970	Building	Non-Contributing
241	WEST 2ND STREET	30.05924635	-90.55492149	1950	Building	Contributing
244	WEST 2ND STREET	30.05941739	-90.55447597	1940	Building	Contributing
245	WEST 2ND STREET	30.05945405	-90.55491409	1950	Building	Contributing
248	WEST 2ND STREET	30.05956267	-90.55441574	1975	Building	Non-Contributing
254	WEST 2ND STREET	30.05973514	-90.55446625	1970	Building	Non-Contributing
257	WEST 2ND STREET	30.05986043	-90.554955	1950	Building	Contributing
258	WEST 2ND STREET	30.05991854	-90.55447094	1935	Building	Contributing
264	WEST 2ND STREET	30.06006856	-90.55448368	1970	Building	Non-Contributing
265	WEST 2ND STREET	30.06006508	-90.55490244	1955	Building	Contributing
272	WEST 2ND STREET	30.0603779	-90.55446826	1945	Building	Non-Contributing
273	WEST 2ND STREET	30.06038609	-90.55493776	1965	Building	Contributing
278	WEST 2ND STREET	30.06055781	-90.55448536	1950	Building	Contributing
279	WEST 2ND STREET	30.06055433	-90.55490278	1970	Building	Non-Contributing
283	WEST 2ND STREET	30.06071847	-90.55491592	1950	Building	Non-Contributing

Street Number	Street Name	Latitude	Longitude	Estimated Construction Date	Resource Type	Resource Count
284	WEST 2ND STREET	30.06077544	-90.55450112	1950	Building	Contributing
125	WEST 3RD STREET	30.05518933	-90.55700932	1940	Building	Contributing
144	WEST 3RD STREET	30.0554653	-90.55663213	2000	Building	Non-Contributing
115	WEST 4TH STREET	30.05498155	-90.55800576	1931	Building	Contributing
136	WEST 4TH STREET	30.055718	-90.557776	1935	Building	Contributing
150	WEST 4TH STREET	30.05608193	-90.55776243	N/A	Site	Non-Contributing
154	WEST 4TH STREET	30.05629209	-90.55777212	1930	Building	Contributing
175	WEST 4TH STREET	30.05659589	-90.55876039	1940	Building	Contributing
181	WEST 4TH STREET	30.056867	-90.55875	1940	Building	Contributing
186	WEST 4TH STREET	30.05699926	-90.55811204	1965	Building	Contributing
187	WEST 4TH STREET	30.05702234	-90.55875537	1940	Building	Contributing
193	WEST 4TH STREET	30.05723605	-90.55874435	1940	Building	Contributing
196	WEST 4TH STREET	30.05746937	-90.55814054	1960	Building	Contributing
203	WEST 4TH STREET	30.05756386	-90.55868886	1960	Building	Contributing
204	WEST 4TH STREET	30.05762863	-90.55812116	1975	Building	Non-Contributing
UNKNOWN	WEST 4TH STREET	30.055992	-90.558077	N/A	Site	Non-Contributing
UNKNOWN	WEST 4TH STREET	30.05671546	-90.55812243	N/A	Site	Non-Contributing
113	WEST 5TH STREET	30.055055	-90.55914207	1940	Building	Non-Contributing
123	WEST 5TH STREET	30.055329	-90.55898	1975	Building	Non-Contributing
125	WEST 5TH STREET	30.05542	-90.559011	1975	Building	Non-Contributing
135	WEST 5TH STREET	30.05561214	-90.55912223	1935	Building	Contributing
139	WEST 5TH STREET	30.05581875	-90.55902315	1940	Building	Contributing
147	WEST 5TH STREET	30.05607326	-90.55903841	1935	Building	Contributing
151	WEST 5TH STREET	30.0562217	-90.55903664	1935	Building	Contributing
157	WEST 5TH STREET	30.05644703	-90.55902366	1935	Building	Contributing
161	WEST 5TH STREET	30.05661637	-90.55905807	1935	Building	Contributing
169	WEST 5TH STREET	30.0568829	-90.55904377	1935	Building	Contributing
175	WEST 5TH STREET	30.05640495	-90.55938005	1935	Building	Contributing
181	WEST 5TH STREET	30.05718121	-90.55917587	1960	Building	Contributing
108	WEST 6TH STREET	30.05494688	-90.55959993	1935	Building	Contributing
114	WEST 6TH STREET	30.05515305	-90.55956513	1975	Building	Non-Contributing
122	WEST 6TH STREET	30.05561185	-90.55925835	1980	Building	Non-Contributing
134	WEST 6TH STREET	30.05585056	-90.55962703	1940	Building	Contributing
140	WEST 6TH STREET	30.05604888	-90.55960502	1935	Building	Contributing

Street Number	Street Name	Latitude	Longitude	Estimated Construction Date	Resource Type	Resource Count
141	WEST 6TH STREET	30.05606543	-90.55998791	1980	Building	Non-Contributing
146	WEST 6TH STREET	30.05623606	-90.55961173	1935	Building	Contributing
147	WEST 6TH STREET	30.05624798	-90.5599762	1935	Building	Contributing
153	WEST 6TH STREET	30.0564479	-90.55992488	1930	Building	Contributing
162	WEST 6TH STREET	30.05672939	-90.55964023	1960	Building	Contributing
165	WEST 6TH STREET	30.05686839	-90.55996377	1935	Building	Non-Contributing
176	WEST 6TH STREET	30.05727291	-90.55964928	1935	Building	Contributing
186	WEST 6TH STREET	30.05763399	-90.55964251	1925	Building	Contributing
UNKNOWN	WEST 6TH STREET	30.05647199	-90.55966571	N/A	Site	Non-Contributing
124	WEST 7TH STREET	30.05553437	-90.56001037	1990	Building	Non-Contributing
128	WEST 7TH STREET	30.05577697	-90.55999126	2000	Building	Non-Contributing
130	WEST 7TH STREET	30.05588812	-90.5603205	1975	Building	Non-Contributing
140	WEST 7TH STREET	30.05614101	-90.56033626	1935	Building	Contributing
146	WEST 7TH STREET	30.05629265	-90.56027524	1975	Building	Non-Contributing
150	WEST 7TH STREET	30.056554	-90.560338	1970	Building	Non-Contributing
156	WEST 7TH STREET	30.05672677	-90.56025311	1930	Building	Contributing
159	WEST 7TH STREET	30.05656224	-90.56066483	1915	Building	Contributing
162	WEST 7TH STREET	30.05688954	-90.56039694	1935	Building	Contributing
169	WEST 7TH STREET	30.057041	-90.560673	N/A	Site	Non-Contributing
188	WEST 7TH STREET	30.05776507	-90.56031816	1935	Building	Contributing
209	WEST 7TH STREET	30.05837157	-90.56071848	1970	Building	Non-Contributing
210	WEST 7TH STREET	30.05854024	-90.56043124	1940	Building	Contributing
215	WEST 7TH STREET	30.05870151	-90.56073021	1975	Building	Non-Contributing
222	WEST 7TH STREET	30.05889993	-90.56043772	1930	Building	Contributing
229	WEST 7TH STREET	30.05918031	-90.56075368	1935	Building	Contributing
231	WEST 7TH STREET	30.05933469	-90.56075871	1980	Building	Non-Contributing
232	WEST 7TH STREET	30.05907382	-90.56029368	1940	Building	Non-Contributing
241	WEST 7TH STREET	30.05933392	-90.56044645	1930	Building	Contributing
244	WEST 7TH STREET	30.0594734	-90.56012403	1960	Building	Contributing
249	WEST 7TH STREET	30.05961712	-90.56047748	1935	Building	Contributing
252	WEST 7TH STREET	30.05974936	-90.5600838	1965	Building	Contributing
257	WEST 7TH STREET	30.05986166	-90.5604583	1935	Building	Contributing
261	WEST 7TH STREET	30.0600261	-90.56048117	1935	Building	Contributing
264	WEST 7TH STREET	30.06011993	-90.56011699	1955	Building	Contributing

Street Number	Street Name	Latitude	Longitude	Estimated Construction Date	Resource Type	Resource Count
267	WEST 7TH STREET	30.06014662	-90.56049721	1935	Building	Contributing
268	WEST 7TH STREET	30.0602949	-90.56013308	1935	Building	Contributing
271	WEST 7TH STREET	30.06037287	-90.56051171	1935	Building	Contributing
272	WEST 7TH STREET	30.0604516	-90.56013878	1935	Building	Contributing
276	WEST 7TH STREET	30.06057145	-90.56014013	1935	Building	Contributing
277	WEST 7TH STREET	30.06055366	-90.56050015	1930	Building	Contributing
106-108	WEST 7TH STREET	30.05501811	-90.56012906	1990	Building	Non-Contributing
114-116	WEST 7TH STREET	30.05523866	-90.56001507	1975	Building	Non-Contributing
121	WEST 8TH STREET	30.05561185	-90.56182355	1965	Building	Contributing
125	WEST 8TH STREET	30.05573402	-90.5618611	1965	Building	Contributing
126	WEST 8TH STREET	30.0558591	-90.56146983	1980	Building	Non-Contributing
128	WEST 8TH STREET	30.0560277	-90.56143664	1990	Building	Non-Contributing
133	WEST 8TH STREET	30.05614987	-90.56186546	2000	Building	Non-Contributing
138	WEST 8TH STREET	30.05629294	-90.56144871	1970	Building	Non-Contributing
141	WEST 8TH STREET	30.05637448	-90.56186412	1975	Building	Non-Contributing
142	WEST 8TH STREET	30.05642381	-90.5614695	1970	Building	Non-Contributing
148	WEST 8TH STREET	30.0566226	-90.56137361	1970	Building	Non-Contributing
154	WEST 8TH STREET	30.05683182	-90.56144435	1955	Building	Contributing
157	WEST 8TH STREET	30.05686055	-90.56187686	1950	Building	Contributing
160	WEST 8TH STREET	30.05704528	-90.56152578	N/A	Site	Non-Contributing
165	WEST 8TH STREET	30.05711244	-90.5619124	1970	Building	Non-Contributing
172	WEST 8TH STREET	30.05739798	-90.56149296	1930	Building	Contributing
178	WEST 8TH STREET	30.05758658	-90.56153182	1955	Building	Contributing
181	WEST 8TH STREET	30.05767715	-90.56199688	1970	Building	Non-Contributing
185	WEST 8TH STREET	30.05786432	-90.56197476	1970	Building	Non-Contributing
186	WEST 8TH STREET	30.05789218	-90.56150302	1970	Building	Non-Contributing
191	WEST 8TH STREET	30.05800419	-90.56197643	1975	Building	Non-Contributing
192	WEST 8TH STREET	30.05807284	-90.56155081	1930	Building	Contributing
194	WEST 8TH STREET	30.05826013	-90.5615741	1970	Building	Non-Contributing
195	WEST 8TH STREET	30.0581754	-90.56192379	1975	Building	Non-Contributing
196	WEST 8TH STREET	30.05862027	-90.56155568	1935	Building	Contributing
203	WEST 8TH STREET	30.05850128	-90.56200728	1950	Building	Non-Contributing
209	WEST 8TH STREET	30.05869069	-90.56208948	1930	Building	Contributing
212	WEST 8TH STREET	30.05876049	-90.5615546	1930	Building	Contributing

Street Number	Street Name	Latitude	Longitude	Estimated Construction Date	Resource Type	Resource Count
217	WEST 8TH STREET	30.05892292	-90.56206428	1935	Building	Contributing
218	WEST 8TH STREET	30.05902551	-90.56154965	1925	Building	Contributing
222	WEST 8TH STREET	30.05917883	-90.56157865	1925	Building	Contributing
223	WEST 8TH STREET	30.059234	-90.56208	1935	Building	Contributing
226	WEST 8TH STREET	30.05930016	-90.56149665	1955	Building	Contributing
229	WEST 8TH STREET	30.05934137	-90.56204919	1950	Building	Non-Contributing
230	WEST 8TH STREET	30.05943361	-90.56156437	N/A	Site	Non-Contributing
235	WEST 8TH STREET	30.05959643	-90.56207926	1935	Building	Contributing
238	WEST 8TH STREET	30.05961074	-90.56154171	1910	Building	Contributing
240	WEST 8TH STREET	30.05979318	-90.56152205	1930	Building	Contributing
243	WEST 8TH STREET	30.05982018	-90.56207527	1940	Building	Contributing
244	WEST 8TH STREET	30.05991448	-90.56160327	1920	Building	Contributing
251	WEST 8TH STREET	30.06004216	-90.56206964	1945	Building	Non-Contributing
254	WEST 8TH STREET	30.06021911	-90.56159642	1925	Building	Contributing
257	WEST 8TH STREET	30.06026328	-90.56209076	1970	Building	Non-Contributing
264	WEST 8TH STREET	30.06056245	-90.56163378	1930	Building	Contributing
LOT 7	WEST 8TH STREET	30.058504	-90.561561	N/A	Site	Non-Contributing
102	WEST 9TH STREET	30.05844992	-90.56266241	1975	Building	Non-Contributing
103	WEST 9TH STREET	30.05843686	-90.56313917	1905	Building	Contributing
108	WEST 9TH STREET	30.05867581	-90.56264253	1910	Building	Contributing
109	WEST 9TH STREET	30.05871776	-90.563168	1940	Building	Contributing
113	WEST 9TH STREET	30.05883151	-90.5633799	1960	Building	Contributing
114	WEST 9TH STREET	30.05890554	-90.56264621	1920	Building	Contributing
119	WEST 9TH STREET	30.0591139	-90.56321967	1930	Building	Contributing
120	WEST 9TH STREET	30.059127	-90.562703	1970	Building	Non-Contributing
124	WEST 9TH STREET	30.05925321	-90.56267693	1920	Building	Contributing
125	WEST 9TH STREET	30.05925968	-90.56318034	1930	Building	Contributing
131	WEST 9TH STREET	30.05942624	-90.56321497	1930	Building	Contributing
136	WEST 9TH STREET	30.05952853	-90.562649	1975	Building	Non-Contributing
137	WEST 9TH STREET	30.05963137	-90.56317737	1930	Building	Contributing
148	WEST 9TH STREET	30.06006692	-90.56269681	1930	Building	Contributing
149	WEST 9TH STREET	30.06007288	-90.56322166	1930	Building	Contributing
156	WEST 9TH STREET	30.06035519	-90.5626505	1935	Building	Contributing
157	WEST 9TH STREET	30.06034395	-90.56320086	1930	Building	Contributing

APPENDIX C

LOUISIANA HISTORIC RESOURCE INVENTORY FORMS